



2021-30

South West Region NRM Plan



South West
NRM



Acknowledgement of Country

We acknowledge the Noongar people of the South West region and pay our respect to their Elders past, present and emerging. We recognise the importance of their inherent spiritual relationship with their country and the value of their Traditional Knowledge to ensure a sustainable future for our environment and for us all.

Contents

1.	Executive Summary	4
2.	Introduction	5
3.	Context for using this document	6
4.	Evolution of the Plan	7
	Change is needed	8
	Community engagement is critical	8
5.	Working with Noongar People	9
6.	Our Priority Investment Areas and how to apply them	10
6.1	Context and background	10
6.2	Biodiversity – Terrestrial, Aquatic, Coastal	12
	6.2.1 Overview	12
	6.2.2 Key threats	13
	6.2.3 Specified Assets	14
	6.2.4 Managing Biodiversity threats and assets	15
6.3	Land Resources	16
	6.3.1 Overview	16
	6.3.2 Key threats	16
	6.3.3 Specified Assets	16
	6.3.4 Managing Land Resources threats and assets	17
6.4	Water Resources	18
	6.4.1 Overview	18
	6.4.2 Key threats	18
	6.4.3 Specified Assets	19
	6.4.4 Managing Water Resources threats and assets	19
6.5	Developing successful funding applications	20
	6.5.1 Check for alignment	20
	6.5.2 Optimise your chances of success	21
7.	Indicators of success	22
8.	Building regional capacity – key collaborations	24
9.	South West NRM's role in the plan	25
10.	Appendices	26

1. Executive Summary

South West NRM has consulted extensively with its wide network of stakeholders to update the South West Region Natural Resource Management Plan for 2021–2030. This update reflects evolving practices in natural resource management (NRM) planning, along with changes to environment pressures and opportunities within the region.

Whilst the development of the plan is coordinated by South West NRM, it is intended to be owned and delivered by the wider community of the region. It sets out a clear, straightforward framework for all parties working within the sector to:

- Align our actions for the shared benefit of our region
- Focus on priorities that have the most significant impact on the threats facing our region
- Understand how to apply the regional priorities to assets in sub-regional and local areas
- Work closely with Noongar people to apply traditional ecological knowledge
- Increase our success in securing funding for key initiatives
- Collaborate to build regional capacity.

Three priority investment areas have been identified by a broad group of subject matter experts and local stakeholders. Management interventions for each priority investment area's underlying threats and key assets are outlined, to assist the community in focusing efforts at a regional, subregional and local level. This alignment will assist in accessing increased funding from a more diverse range of sources. This plan also addresses both Federal EPBC Matters of National Environmental Significance (MNES) and State government priorities within the region.

NRM practitioners in the region are encouraged to apply the frameworks and decision-making flows to their initiatives and share progress with South West NRM to allow for regional measurement of trends over time.

We are all custodians of a significant portion of a global biodiversity hotspot, and we all have a part to play in protecting and enhancing it. By clearly stating our shared goals, we can now focus on working together to make a difference today and develop a sustainable environment for tomorrow.



2. Introduction

Since 2002, South West NRM (formerly South West Catchments Council) has been responsible for facilitating the development of the South West Region Natural Resource Management Plan, on behalf of stakeholders across the region. Over the years, the different iterations of this plan have involved a variety of approaches. The common thread running through them all has been an unwavering commitment towards finding solutions to the growing environmental challenges our region faces, enabling us to keep progressing and succeeding. These solutions are only ever possible through world-class collaboration with a broad range of stakeholders and sustained enthusiastic participation by our region's NRM community.

Our environmentally diverse region brings complex challenges for all of us involved in protecting, managing, and improving our natural spaces. We lie within an internationally renowned biodiversity hotspot, featuring unique plants and animals found nowhere else on Earth. It will take our collective care to ensure our ecosystems are returned to a state where they are healthy, robust and resilient to future change.

In more recent years, it has become apparent that the increasing environmental pressures on our unique region call for a new, ambitious approach by South West NRM to better support and coordinate NRM group activities. When our ecological and social capital future is being tested, we believe we must respond with urgency.

That is why South West NRM has taken a new approach to developing this NRM plan for 2021 – 2030. While South West NRM authors and facilitates the plan, it's designed to be used by all of us. Further, in response to the NRM community's feedback, the plan is more inclusive of the different challenges presenting in different areas. We now focus on the challenges we share in common to maximise opportunities for local community inclusion and engagement at a grass-roots level where the community's passion lives.

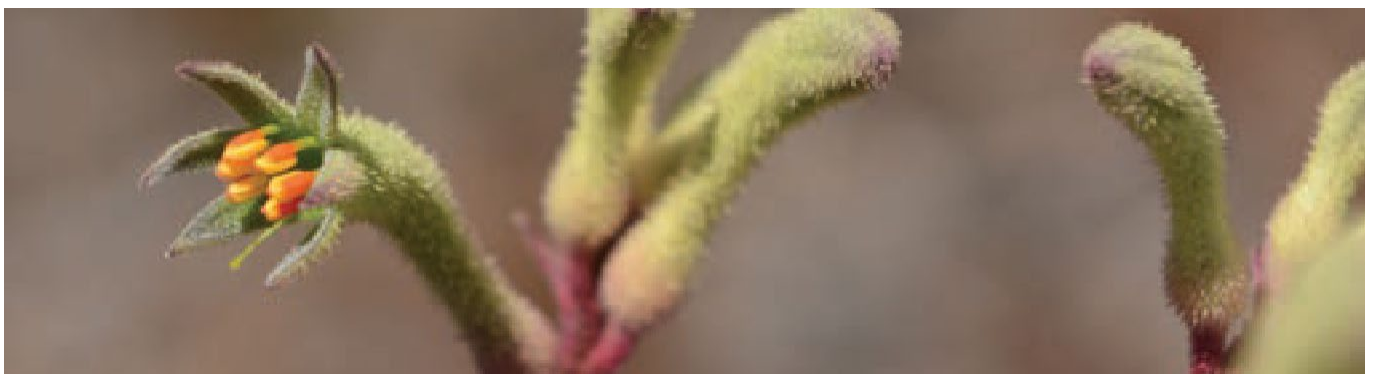
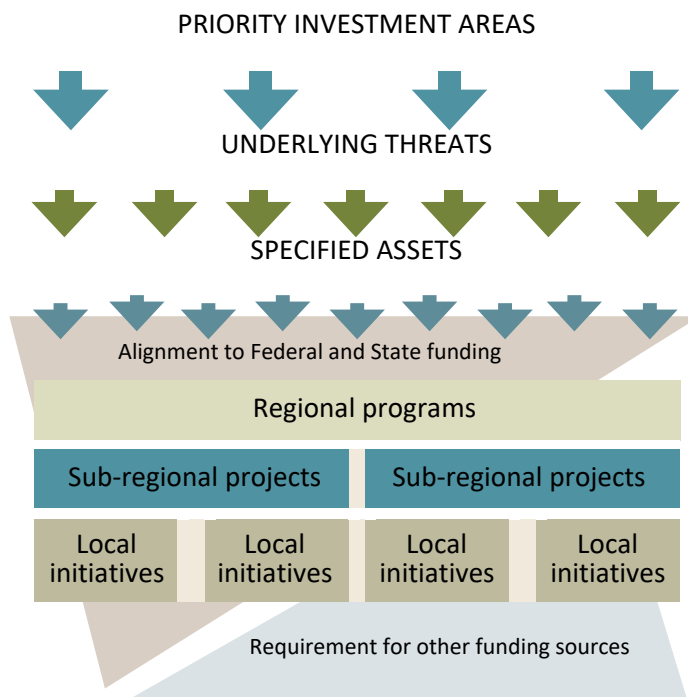


3. Context for using this document

The plan is a framework designed to help the NRM community of our region align actions, prioritise effort, maximise funding success and understand the funding avenues at different levels of focus. This plan is designed to be responsive to local issues but also address environmental assets at a State and Federal level including those assets listed under the Environmental Protection and Biodiversity Conservation Act 1999 (the EPBC Act). That means specific programs, projects and actions will be owned by you (either as an individual group or in collaboration across different groups) and measured collectively on behalf of our region. It's a simpler approach to previous iterations, recognising that ownership is widespread and funding has not yet been secured for many of the key initiatives required to achieve our shared overall objectives.

The structure of the plan also recognises that the criteria for National and State funding is very specific, focusing mainly on assets linking directly to their respective priorities. These priorities may not always translate to specific NRM challenges and assets in your sub-regional or local areas. In this case, we have listed options you may consider to fund or resource such initiatives.

FRAMEWORK ALIGNMENT



4. Evolution of the Plan

In the 1980s and 90s Natural Resource Management strategic planning was predominantly threat-based. Using this approach, a range of actions were developed to manage key or priority threats for the region.

This changed in the early 2000s when researchers and funders in the field concluded that dealing with a single threat rarely had a significant positive effect on the natural resource being managed. They determined most natural resources are threatened by multiple factors, therefore dealing with a single threat in isolation wasn't very effective. For this reason, a new asset-based approach was employed to develop regional NRM strategies across Australia for the NRM regions that were created at this time.

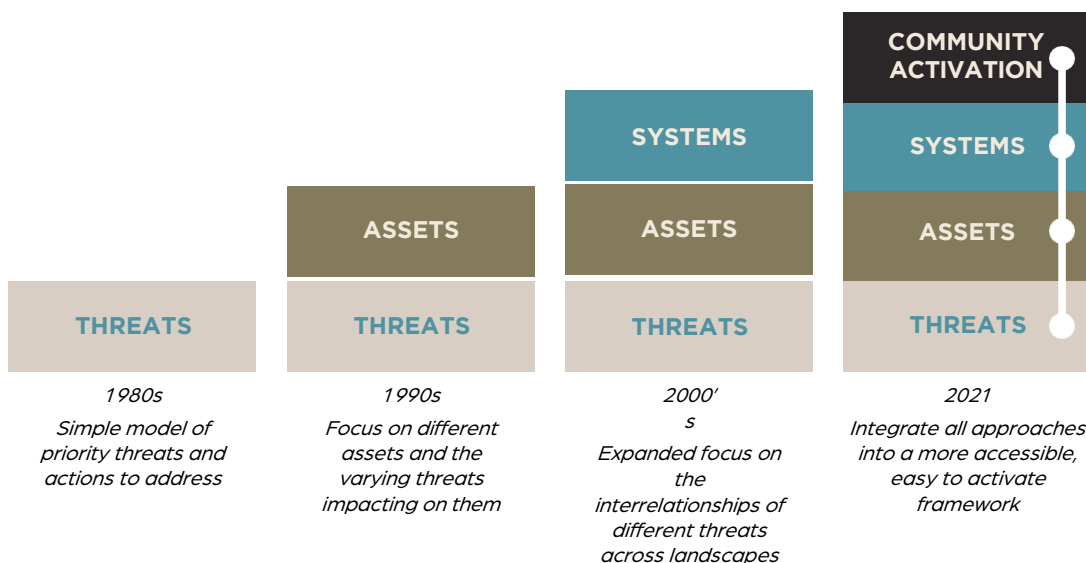
It wasn't until 2010 that researchers discovered that dealing with multiple threats didn't always result in reversals in the decline of natural resources/assets. In response, the concept of tipping points was introduced. Tipping points refer to the state of a natural resource beyond which the natural resource changes completely and irrevocably. For example, as grazing pressure increases certain plants are preferentially grazed more and more until a point is reached when those plants can no longer reproduce enough to maintain their populations, and so they disappear. Once they disappear, the whole structure and function of that ecosystem or asset changes, as do the types of ecosystem services it provides.

To incorporate this idea of tipping points into asset-based planning, planners had to understand the entire system and its interrelationships. And so systems-based NRM planning was developed.

However, systems-based NRM planning failed to gain sufficient traction, mainly because it is hard to do well and therefore costly. For this reason, most organisations have reverted to or maintained asset-based NRM planning. Their actions are designed for certain threatened species, a specific river, lake or wetland, or an area of land.

When used exclusively, asset-based NRM planning has a serious flaw in that it leads to arbitrary prioritisation matrices – a binary "in/out" listing of assets that have been deemed worthy of prioritisation. This can work against the way initiatives are successfully activated through community inclusion.

EVOLUTION OF PRIORITISATION MODELS



As previous approaches were not working as intended, the time is right to refresh our thinking. As such, the evolution of the plan has been shaped by two key principles: change is needed and community engagement is critical.

Change is needed

To better inform the plan, stakeholders were consulted through four sub-regional workshops, eight in-depth interviews and an online survey. Their feedback highlighted three consistent themes.

First, for some time now there has been confusion regarding who owned the plan, how it should be used, what detail is included in plans and how to measure success. This confusion represented a significant barrier for stakeholders to engage with the plan, understand its relevance and identify how they can contribute to its success.



Second, the structure of the document created arbitrary distinctions making it difficult for stakeholders to properly engage with and identify ways to participate. For example, there was little apparent distinction between Aquatic Biodiversity, Water Resources and Coasts and the Marine Environment, yet each had its own section with specific priorities.

Third, the structure also precluded any integration of Noongar land management thinking into the different areas of focus. Instead, it was included as a subset of the Communities and Culture key resource theme area which felt "hidden" to many stakeholders and did not align well to current thinking about its importance as a core consideration.

Community engagement is critical

It was clear previous plans were working against one of the most essential success factors for any regional NRM plan: to encourage and support extensive community involvement. This can only be achieved when each of us have a clear idea of where and how we can get involved, and how that relates to our local community and assets.

We have evolved a new approach to build on all aspects of previous plan applications. The plan is now structured around Priority Investment Areas to make it easier to understand and engage with, based on themed groupings of highest order threats and systems influences across the region. We have maintained alignment to broader State and National priorities through a list of Specified Assets. However, we also understand local initiatives may not necessarily align to a Specified Asset. In these instances, we have provided other options for consideration.

Overall, we will know this plan is successful when there are multiple projects being funded, at regional, sub-regional and local levels, addressing different aspects of the threats we face and also aligning to our overall priority investment areas.

5. Working with Noongar People

2030 Aspiration for Working with Noongar People

The Noongar community is deeply engaged with NRM, working in the industry through their own corporations and employment within other businesses, providing Traditional Knowledge (with their intellectual property respected) that educates the broader community and results in widespread adoption practices providing for a more sustainable relationship between man and the environment.

The South West Native Title Settlement¹ is the largest native title settlement in Australian history, impacting an estimated 30,000 Noongar people and encompassing approximately 200,000 square kilometres of land. This extensive Settlement resolves Noongar native title claims in the south west of WA in exchange for a package of benefits including:

- *Recognition through an Act of Parliament – the Noongar (Koorah, Nitja, Boordahwan) (Past, Present, Future) Recognition Act 2016.*
- *Noongar Boodja Trust – a perpetual trust, receiving yearly instalments of \$50 million for 12 years.*
- *Noongar Corporations – the establishment of six Noongar Regional Corporations and one Central Services Corporation, with funding support of \$10 million a year for 12 years, and \$6.5m to establish the offices.*
- *Noongar Land Estate – up to 320,000 hectares of development and cultural land to be held by the Noongar Boodja Trust.*
- *Co-operative and joint management of National Parks and the South West Conservation Estate.*
- *Land Access to certain Crown lands for customary activities.*
- *Noongar Heritage Partnership Agreement – collaboration framework for identifying, recording, protecting and managing Noongar Heritage values and sites.*
- *Noongar Standard Heritage Agreement – standard processes for determining when and how to carry out heritage surveys on Noongar Lands.*
- *Noongar Land Fund – up to \$46,850,000 over ten years for land-related projects.*

This is a significant change in the NRM stakeholder landscape, occurring in parallel with consistent feedback about strategies that have failed to reflect the importance of Noongar people and their knowledge in the region.

Our new approach in designing the plan enables Noongar perspectives and stakeholders to be included at the initiative level across all Priority Investment Areas, not siloed as a sub-section of a Communities and Culture theme, as per previous iterations. Key areas of collaboration now include:

Key areas of collaboration now include:

- *Training and enterprise development on Country*
- *Planning projects and working with Noongar partners on all Landcare projects*
- *Applying Traditional Knowledge and approaches when analysing specific challenges and developing appropriate solutions*
- *Integration of Traditional Knowledge into broad-based community education and engagement programs*
- *Early identification of relevant stakeholders via Noongar Regional Corporations.*

¹<https://www.wa.gov.au/organisation/department-of-the-premier-and-cabinet/south-west-native-title-settlement> (accessed 5/1/2022)

6. Our Priority Investment Areas and how to apply them

This section sets out the rationale behind Priority Investment Areas, the implications for specific assets and threat management, and how to apply them to future funding applications.

At a Glance

Global biodiversity hotspot – one of two in Australia, one of 36 globally

2.4% of Earth's land surface, supporting more than 50% of the world's endemic plant species and almost 43% of bird, mammal, reptile and amphibian species as endemics (as defined by Conservation International www.iucn.org)

Highest concentration of rare and endangered species within Australia

6.1 Context and background

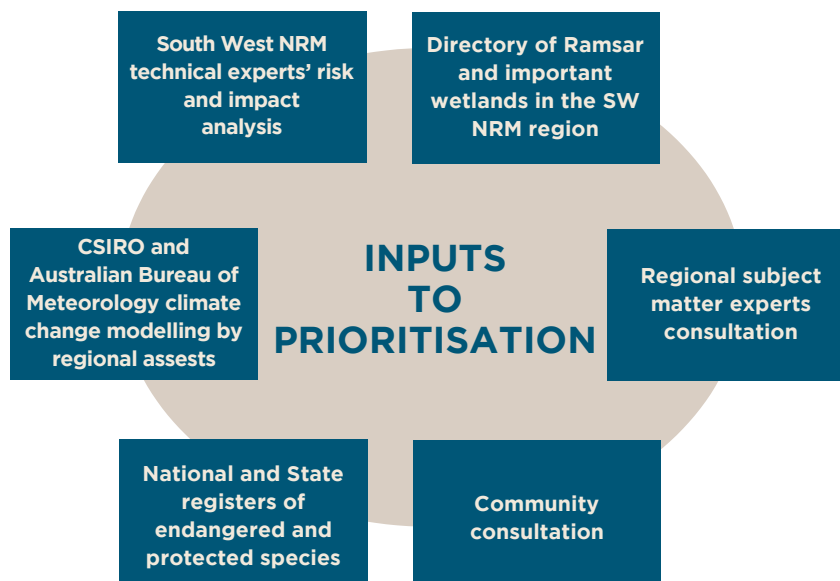
The entire South West NRM region sits within the South West Australia Ecoregion, one of 36 internationally recognised biodiversity hotspots across the world, and one of only two in Australia.

The southwest hotspot covers an area of 356,700km², stretching from Shark Bay to east of Esperance. The South West NRM region is also recognised as a National Biodiversity Hotspot.

This global recognition is based on the diversity and high level of endemism found in the region, particularly among plants and reptiles.

Boasting a variety of landscapes, from towering forests to rolling shrublands, the south west has a number of Threatened Ecological Communities (TECs) and is home to a unique array of bird and vertebrate species. The listing as an international biodiversity hotspot also recognises the serious threat that the Ecoregion faces from human sources.

There are three Priority Investment Areas with the most significant impact on NRM within the South West NRM region. They reflect the consolidation and interpretation of a wide range of scientific analysis and input as shown in the diagram below:



Importantly, our Priority Investment Areas have been developed to align with both National and State priorities. These priorities, along with the analysis and evidence that supports them, help to shape the Investment Areas, their priority threats, assets and suggested actions as illustrated in the diagram below:

NATIONAL REGIONAL LAND PARTNERSHIPS OUTCOME AREAS

1. The ecological character of Ramsar sites is maintained or improved
2. The trajectory of species targeted under the Threatened Species Strategy, and other EPBC Act priority species, is improved
3. The natural heritage Outstanding Universal Value of World Heritage properties is maintained or improved
4. The condition of EPBC Act listed Threatened Ecological Communities is improved
5. The conditions of soil, biodiversity and vegetation are improved
6. Agriculture systems have adapted to significant changes in climate and market demands



STATE NRM PRIORITIES

1. Sustainably manage land, with a focus on regenerative agriculture
2. Maintain and enhance water resources
3. Protect and enhance the marine and coastal environment
4. Conserve and recover biodiversity
5. Enhance skills, capacity and community engagement
6. Deliver high quality planning that leads to effective action



We have three Priority Investment Areas for the plan:

**BIODIVERSITY –
TERRESTRIAL,
AQUATIC, COASTAL**

LAND RESOURCES

WATER RESOURCES

6.2 Biodiversity

– Terrestrial, Aquatic, Coastal

6.2.1 Overview

As of May 2022, there are 167 EPBC Act listed threatened species within the region. 144 are either *known* or *likely* to be present (92 plants, 22 birds, 11 mammals, 7 fish, 6 invertebrates, 4 reptiles and 2 amphibians). Twenty three species are listed as 'may occur' in the region¹. In addition, there are 14 EPBC Act listed threatened ecological communities in the region, of which 6 are endemic (Refer Appendix C). In addition to these federally listed species there are a further 217 flora and 36 fauna species listed as threatened or priority species under the WA Biodiversity Conservation Act in 2021², within the Southwest region. A number of threatened or priority species are also listed in other DBCA regions such as Warren Region that form part of the South West NRM regional boundary. These threatened species play important roles in the environment and nearly all of these species also have cultural significance to the Noongar people of the region. For this reason, it is recommended that Noongar people be consulted and involved in efforts to conserve these species at all times.

2030 Aspiration for Biodiversity

Ecosystem improvement and restoration provides biodiversity and connectivity on a landscape scale, to support healthy populations of native species that co-exist with sustainable agricultural, forestry, fishing and tourism industries.

All these listed threatened species and ecological communities are priorities for conservation action. Priority should be given to those species that are at higher risk and where the threatening processes are known and are manageable. Significant landscapes that contain multiple threatened species or ecological communities that are subject to manageable threat(s) are also priorities for protection.

Federally-funded priority outcomes for the region include that over the period mid-2018 to mid-2023;

- The trajectory of species targeted under the Threatened Species Strategy, and other EPBC Act priority species, stabilise or improve.
- The condition of EPBC Act listed Threatened Ecological Communities improve.

South West NRM's federally-funded programs receiving investment over this period aim to:

- Improve the population trajectory of the western ringtail possum (*Pseudocheirus occidentalis*)
- Implement recovery actions for the numbat (*Myrmecobius fasciatus*), the chuditch (*Dasyurus geoffroii*), the woylie (*Bettongia penicillata ogilbyi*) and the malleefowl (*Leipoa ocellate*).
- Improve the population trajectory of the Carnaby's cockatoo (*Calyptorhynchus latirostris*) through the improvement of breeding habitat.
- Increase numbers of the Australian bittern (*Botaurus poiciloptilus*) through targeted feral animal control across its range in the Muir-Byenup wetlands.

Refer to Appendix D for full list of current South West NRM projects addressing EPBC listed species. Appendix E details listed species under the EPBC Act currently unfunded.

Case Study: Felixer Grooming Traps for Controlling Feral Cats in the Upper Warren

This project is testing and refining the use of Felixer grooming traps for controlling feral cats at the mesoscale in the Upper Warren area. Baiting for feral cats has been found to be largely ineffective in this area but the Felixer grooming trap has potential to be a useful tool for controlling feral cats. This project will determine their safety for non-target native species and test several deployment styles to assess their effectiveness for controlling feral cats.



EPBC Species targeted:

- *Bettongia penicillata ogilbyi* (Woylie)
- *Dasyurus geoffroii* (Chuditch)
- *Macrotis lagotis* (Bilby)
- *Myrmecobius fasciatus* (Numbat)
- *Pseudocheirus occidentalis* (Western ringtail possum)
- *Setonix brachyurus* (Quokka)

Plan Theme: Biodiversity – Terrestrial
Priority asset: Listed threatened species, Perup
Partners: South West NRM, DBCA, Blackwood Basin Group

1. <https://www.awe.gov.au/environment/epbc/about/epbc-act-lists#species> (accessed 05/01/2022)

2. <https://www.dpaw.wa.gov.au/plants-and-animals/threatened-species-and-communities> (accessed 05/01/2022)

6.2.2 Key threats

The six key threats have been identified as:

1. Climate change

2. Habitat loss

- *Land clearing*
- *Salinity*
- *Excess extraction of surface and/or ground water*
- *Sedimentation*
- *Extreme events*

3. Introduced species

- *Predators*
- *Herbivores*
- *Invertebrate pests*
- *Invasive weeds*

4. Inappropriate fire regimes

- *Wildfire and planned fire*

5. Diseases and pathogens

- *Established fungal plant pathogens (inc. phytophthora, armillaria, marri canker)*
- *Chytrid fungus*
- *Emerging fungal pathogens (inc. myrtle rust)*

6. Pollution

- *Eutrophication (marine, estuarine and waterways)*
- *Acidification (marine and coastal)*
- *Ground water pollution*
- *Marine debris on beaches*

“We know climate change is already happening, and nowhere is the damage more stark than in Australia’s southwest. The southwest of Western Australia has been identified as a global drying hotspot. Since 1970, winter rainfall has declined up to 20%, river flows have plummeted and heatwaves spanning water and land have intensified.”¹

¹Jatin Kala, Belinda Robson, Joe Fontaine, Stephen Beatty, Thomas Wernberg, “Drying land and heating seas: why nature in Australia’s southwest is on the climate frontline”, *The Conversation*, October 28 2021.

6.2.3 Specified Assets

These assets have been identified at the regional level based on the level of threat, manageability and their alignment to State and National priorities.

TERRESTRIAL

The following biolandscapes¹:

**Benger Ruabon-Tutunup
Scott River
Toolibin
Whicher 1**

*Bridgetown;
Collie North;
Collie South;
Karridale; Perup;
Walpole;
Whicher 2;
Windy Harbour²*

AQUATIC

**Priority Species – Balston’s
Pygmy Perch; Black Striped
Minnow; Margaret River
Burrowing Crayfish;
Hairy Marron; White-bellied
Frog; Orange-bellied Frog
and Reedia**

**Other Priority Assets –
Vasse- Wonnerup and Muir-
Byenup wetlands;
Leschenault and Harvey
Estuaries; Waterways
leading into: Deep River;
Donnelly River; Margaret
River; Shannon River;
Ellen Brooke; Milyeabrup
Brook; Milyeannup Brook,
Poison Gully; Lake Jasper;
Commercial aquaculture.**

*Western Mud Minnow;
Pouched Lamprey; all other
endemic freshwater fish,
crayfish and jellyfish
species; Leschenault Inlet;
Hardy Inlet; Broke Inlet;
Gardner River; Meerup
River, Chapman Creek;
McLeod Creek; Rushy
Creek; Upper Chapman
Creek²*

COASTAL

**All EPBC Act-listed
species; Ngari Capes
Marine Park; Geographe
Bay including its seagrass
beds;
Blackwood Estuary;
Vasse-Wonnerup Estuary;
Leschenault Estuary.**

*Coastline of the Augusta-
Margaret River,
Busselton, Capel and
Bunbury Local
Government areas;
all offshore islands; surf
breaks with National
Surfing
Reserve status²*

1 - Biolandscapes: A geographical area of 5x5 km with a particular set of fauna, flora and ecological communities present. 2 - First order priorities are in **bold**, second order in *italics*.

6.2.4 Managing Biodiversity threats and assets

A concise overview of recommended actions for managing biodiversity threats is outlined below. These actions have been developed using Project Planning Matrices (PPMs), providing a central and clearly prioritised framework for relevant Monitoring, Evaluation, Reporting and Improvement programs.

Climate change

- Climate change and its impact on rainfall and temperature is perhaps the most significant risk factor across Terrestrial, Aquatic and Coastal Biodiversity assets. Increasing awareness and impact mitigation are critical management actions.
- The 2014 iteration of the South West NRM Plan included extensive modelling of the relative risk levels of decreasing rainfall and increasing temperature for each of the region's key assets, and remains a critical input into the prioritisation of these assets. Further details are included in Appendix B.

Habitat loss

- Protect all remnant native vegetation particularly for ecological communities that are listed as threatened, or in areas where high proportions of native vegetation have been cleared, including coastal and estuarine vegetation complexes.
- Address the threats to remnant habitat – often subject to multiple threats including secondary salinity, disease, inappropriate fire regimes, weeds, grazing by livestock, introduced herbivores and/or over abundant native herbivores, sedimentation of aquatic and estuarine habitats, over-harvesting of marine and estuarine species and excess extraction of surface or ground water.
- Prepare for emerging biosecurity threats such as myrtle rust that, if established in the region, has the potential to cause significant degradation of habitat and the loss of highly susceptible flora species.
- Undertake coastal risk planning and mitigation to reduce, as much as possible, the impact of sea level rise on coastal and estuarine vegetation communities.
- Propagate via seed collection or cloning key plant populations to service biodiverse revegetation and give consideration to feeding preferences of threatened species.

Introduced species

- Reduce the impacts of introduced species through integrated action at the local and landscape scale. Control measures need to consider operating at both levels as projects that purely focus on local actions are unlikely to have significant long-term impacts on reducing this threatening process.
- Avoid creating opportunity for invasive species. Consider the interactions between invasive species whereby controlling one species may release another from control and create additional problems.

Inappropriate fire regimes

- Manage the amount of fuel present in the landscape which can impact the intensity and spread of wildfires when they occur.
- Maintain a mosaic of fire ages. As both fire intensity and frequency impacts on vegetation associations, maintaining a mosaic of varying fire ages across the landscape is critical for the conservation of biodiversity.

Diseases and pathogens

- Recommended actions to address the impacts of various diseases and pathogens are specific to each. The threat to flora is of particular concern for biodiversity in the region. Some pathogens such as *Phytophthora cinnamomi*, the cause of dieback, are introduced and others such as *Quambalaria coyrecup*, the cause of marri canker, are native but are having increasing impacts because of changing climatic and environmental conditions.
- Provide community education and maintain surveillance to detect incursions. Myrtle rust is one of the most serious emerging threats. Present across the eastern seaboard of Australia, this pathogen is having devastating impacts on susceptible species and is dramatically changing ecosystems.
- Advocate that Government do more to mitigate the impact of marine ballast carrying invasive species and diseases. This is an under-reported and increasing threat to marine ecosystems.

Pollution

- Reduce the use and runoff of fertiliser from agricultural land to mitigate eutrophication and ground water pollution, which are serious threats to our coastal and marine assets.
- Build community awareness to avoid the creation of marine debris, such as discarded fishing line and plastic bait wrapping. Increasing levels of marine debris are a serious threat to marine life and seabirds.
- Ocean acidification is largely caused by increasing carbon dioxide levels in the atmosphere and so outside the reach of local management actions.

6.3 Land Resources

6.3.1 Overview

Agriculture is the single largest land use in the south west NRM region, covering 55% of the total land area. The region's reliable winter rainfall supports a diverse range of crops and pasture-fed livestock enterprises, despite its ancient and relatively infertile soils. In total, >5,000 farm businesses and some 18,000 smaller landholdings contribute >\$1 billion to the economy ⁴, making agriculture and its use of the land a key social and economic resource for the region. However, the overall health and productive capacity of the soils underpinning agriculture has been declining steadily over the past decades, exacerbated by the changing climate.

A federally-funded priority outcome for the region is that over the period mid-2018 to mid-2023, actions taken will increase awareness and adoption of land management practices that improve and protect the condition of soil, biodiversity and vegetation.

South West NRM's federally-funded programs receiving investment over this period aim to increase vegetation and biodiversity on-farms.

6.3.2 Key threats

1. Declining soil health

- *Soil acidity*
- *Water repellence*
- *Compaction*
- *Decreasing soil carbon*

2. Drought

- *Dryland salinity*
- *Weeds, pests and diseases*
- *Decreasing numbers of beneficial insects*
- *Biosecurity threats from new introduced species*

3. Climate Change

6.3.3 Specified Assets

The following soil-landscape zones have been identified at the regional level based on the level of threat, manageability and their alignment to State and National priorities:

- *Bassendean Zone*
- *Eastern Darling Range Zone*
- *Perth Coastal Zone*
- *Pinjarra Zone*
- *Southern Zone of Rejuvenated Drainage*
- *Warren-Denmark Southland Zone*
- *Western Darling Range Zone*

2030 Aspiration for Land Resources

The land is healthier and more resilient as land managers understand the value of their natural capital, manage it sustainably and are adept at responding to ongoing impacts of climate change.

1. <https://www.abs.gov.au/statistics/industry/agriculture/value-agricultural-commodities-produced-australia/latest-release#data-download>

6.3.4 Managing Land Resources threats and assets

The recommended actions have been determined through use of the Project Planning Matrices. The following recommended actions have been identified as being the priorities for investment:

Sustainable farm management

- *Expand the use of perennial, native and salt-land pastures and vegetation on-farm. Improve fertiliser and chemical management on-farm to reduce the amounts used and associated negative impacts and support the use of biological alternatives. Implement field trials, demonstrations and workshops to support the adoption of best management practices targeting grazing management, soil compaction, soil biological activity, water repellence, surface water management and water use efficiency.*
- *Investigate the potential of 'Natural Capital Accounting' as a tool to promote sustainable management practices.*

Integrated Pest Management (IPM)

- *Promote and support IPM practices to improve management of pests and diseases in agricultural crops and reduce the impact of pesticide use on beneficial insects, including pollinators. IPM is the combination of multiple control methods for pests including the use of physical, biological, chemical and cultural techniques. The combination of multiple control methods greatly improves the efficacy of control measures and reduces the risks of adaptation by the pest to individual control measures.*

Agricultural land and biodiversity

- *Undertake revegetation and promote and support revegetation programs that improve biodiversity by providing habitat and food sources, for example through the inclusion of pollinator-friendly plants in planting mixes and support for riparian revegetation work targeting groundwater recharge.*
- *Implement relevant community awareness programs.*

Managing the effects of climate variability on land resources

- *Promote and support adaptive responses to the effects of a drying and warming climate, including financial reward for farmers to improve biodiversity on-farm and tackle salinity.*
- *Promote and support carbon farming initiatives that benefit farmers and also result in benefits to on-farm natural resources*



6.4 Water Resources

6.4.1 Overview

Water resources includes the waterways, wetlands and estuaries of the South West NRM region. They provide a range of ecosystem services including:

- *Biodiversity values of the waterways themselves*
- *Provision of nursery habitat and drought refuges*
- *Water quality maintenance*
- *Recreational, aesthetic, cultural and spiritual values*
- *Water for all social and economic activities*
- *Tourism.*

Many of the water resources of the region are significant, with three wetlands designated of international importance as Ramsar wetlands. A further 46 are listed as being nationally significant, with 210 being regionally significant⁵

A federally-funded priority outcome for the region is that over the period mid-2018 to mid-2023, actions taken will restore and protect the ecological character of Ramsar sites. South West NRM's federally-funded programs receiving investment over this period focus on ecosystem improvement of the following Ramsar wetlands; Toolibin Lake, the Vasse-Wonnerup System and the Muir-Byenup System.

2030 Aspiration for Water Resources

Water quality is greatly increased and water resources are sustainably accessible in the quantities required to support ecosystems and communities, through community and industry understanding water is a precious resource and managing it effectively.

6.4.2 Key threats

1. **Salinity**
2. **Eutrophication**
3. **Acidification**
4. **Excess extraction of surface and/or ground water**
5. **Sedimentation**
6. **Decreasing runoff and water availability linked to changing climate**



⁵ <https://www.awe.gov.au/water/wetlands/australian-wetlands-database/directory-important-wetlands> (accessed 05/01/2022)

6.4.3 Specified Assets

The following assets have been identified at the SW regional level based on the level of threat, manageability and their alignment to State and National priorities.

1. Lakes, wetlands and estuaries

- *Broadwater*
- *Hardy Inlet*
- *Lake Jasper/Gingilup-Jasper wetland system*
- *Leschenault Estuary*
- *Muir-Byenup system*
- *Toolibin Lake*
- *Vasse-Wonnerup Estuary*

2. Rivers

- *Capel*
- *Deep*
- *Donnelly*
- *Lower Blackwood (river and estuary – High Ecological Value Aquatic Ecosystems (HEVAE-listed))*
- *Lower Scott*
- *Preston*
- *Shannon*
- *Warren*
- *All streams of the Leeuwin Ridge*

All waterways for which management actions have been developed as part of Water Quality Improvement Plans and all waterways leading into the wetlands and estuaries listed above.

6.4.4 Managing Water Resources threats and assets

The recommended actions have been determined through use of the Project Planning Matrices. The following recommended actions have been identified as priorities for investment:

Reinstate Natural Waterways

- *Revegetation and groundcover management programs in and around water resources, focusing on activities in the upper catchments of priority systems and that target biodiversity loss, eutrophication, sedimentation and salinity.*

Maintain and improve ground water within the region

- *Increase perennial vegetation in agricultural areas.*

Improve urban stormwater management and water use efficiency

- *Support Local Governments in the development and implementation of projects that support Water Sensitive Urban Design (WSUD) activities or promote water use efficiency and awareness.*

Manage the effects of climate variability on water resources

- *Adaptive responses to the effects of climate variability on water resources, through flooding, inundation and drought.*

Case Study: EPBC-Listed Ramsar Wetland – Vasse-Wonnerup System

Long term management of South West Wetlands of International Significance.

The aims of this project are to control weeds and reduce garden nutrient runoff to the Vasse-Wonnerup wetlands.



Project Partners: South West NRM, GeoCatch Department of Biodiversity, Conservation and Attractions (DBCA) Department of Water and Environment Regulation (DWER)

6.5 Developing successful funding applications

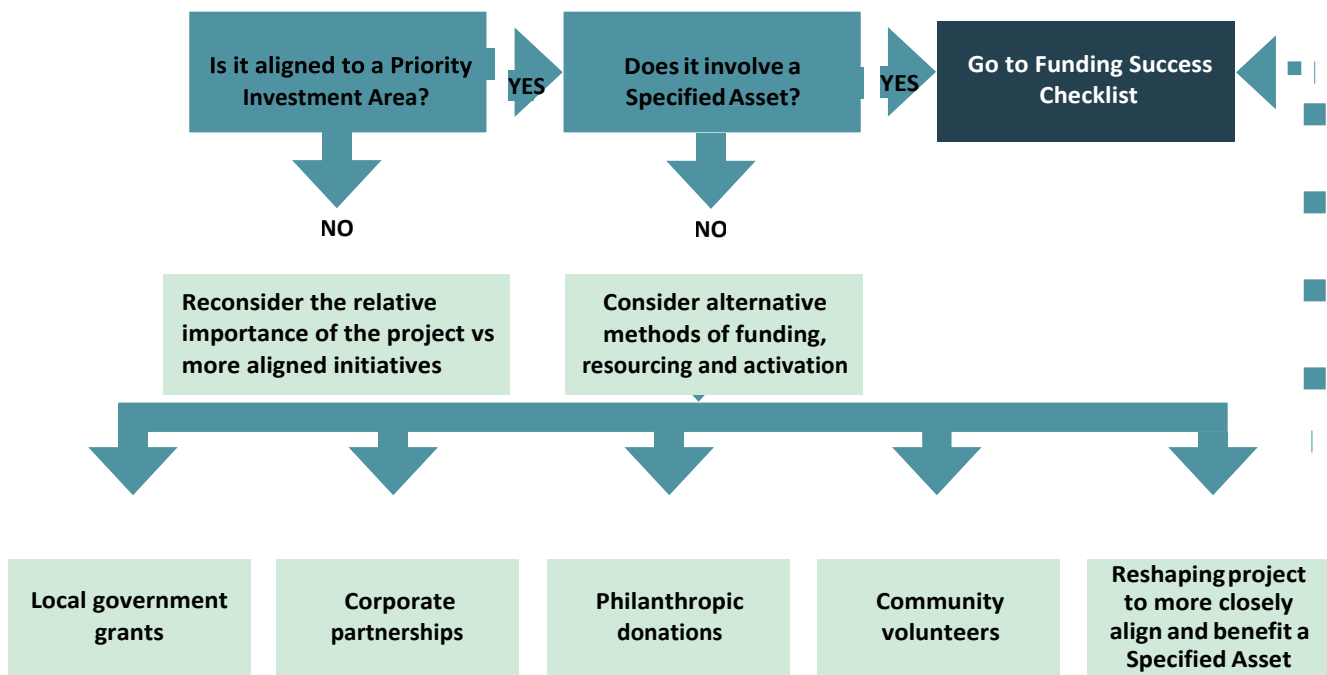
The preceding sections will enable NRM groups to quickly and easily identify how to best align their efforts and major initiatives to the overarching priorities of the plan.

Given most of the available funding is contingent on demonstrating strong alignment, we have designed a simple process to assist groups step through and identify priority projects and initiatives. Our recommended approach for funding applications is in two-steps: first, check for alignment and second, optimise the chances of success.

6.5.1 Check for alignment

Once you have a basic idea of what you are looking to get funding for, you will need to check that it aligns to this plan and its priorities.

FUNDING DECISION FLOW



Alternative methods of funding, resourcing and activation include:

- **Local government grants**
Partnership with Local Governments to better integrate local environmental priorities into their community-determined local government Community Strategic Plans can lead to grants and ongoing funding for targeted, measurable, high impact local initiatives.
- **Commercial partnerships**
There are emerging opportunities for partnerships with business on well-structured local projects. Being clear about the project focus, rationale and outcomes can help you identify which of these may be most suitable for a partnership proposal.
- **Philanthropic donations**
As with commercial partners, there are grant organisations and individuals looking to donate or partner with NRM groups. Again, clarity in scope and outcomes will be critical.
- **Community volunteers**
Engaging and activating a base of local community volunteer support can help projects become viable in the absence of funding or other resourcing.
- **Reshaping the project to align more closely with and benefit a Specified Asset**
Highlighting that a Specific Asset may benefit and making it central to the project design can help to increase alignment to the plan as well as open up additional funding sources, including State or Government grants.

6.5.2 Optimise your chances of success

The Funding Success Checklist will help you to develop funding applications that demonstrate strong alignment and high potential to make a realistic, positive and measurable impact on our Priority Investment Areas.

FUNDING SUCCESS CHECKLIST

Is it relevant and realistic?

It's important to start with a challenge that is relevant and current for your organisation or community group, but also one that is realistic to tackle given the size of the funding submission.

Are you clear on the action that is required?

Being clear on the type of action required will help you to identify a) whether there are any other stakeholders that may be required and b) how best to measure the outcome. It will enable you to identify whether there are any other programs in other localities that may be focusing on similar actions, and the possibility of any co-operative activities or leveraging that could help you get the most out of your planned initiative.

Can you measure the outcome?

The demonstration of outcomes is crucial to ongoing funding. As a region we need to get better about sharing our successes, and this starts at the initiative level – understanding the impact you are seeking to make (and being set up to measure this impact from the outset) will help us to show the positive difference we are making.

Who else should be involved?

Understanding the scope of the challenge and whether other organisations may be facing the same is an important step in determining the best way to tackle it. Regional challenges are those region-wide issues that are likely to involve multiple stakeholders including larger players like South West NRM. Sub-regional challenges are specific to one of the sub-regions in the SW NRM, and again could involve multiple stakeholders, assets or species. Local challenges are those that can be managed by a single organisation and are likely to be particular to a certain locality.

How can you best work with Noongar people?

Understanding a challenge from different perspectives is critical, especially those of Noongar people. In many areas co-management is likely to be part of the solution and needs to be factored into the initial thinking.

Are there co-funding opportunities?

Demonstrating additional sources of funding can significantly increase your success rate for funding submissions, and is an excellent indication of a strong and effective collaboration

7. Indicators of Success

Ecosystems are multi-faceted by their nature and NRM initiatives seeking to influence them have the added complexity of social and economic factors to consider. Successful outcomes are often contingent on being able to achieve a sizeable scale of action. Patience is also required, as the lag from actions being implemented to realising environmental outcomes can be many years. Consequently, we have not prescribed set metrics or targets to indicate the success of our plan. Instead, we will use a traffic light system based on a range of relevant measures. Green will indicate a positive trend against previous measures, yellow a neutral trend, and red a negative trend.

The exact measures to be used and their impact on the overall rating will be determined by South West NRM at the end of each Commonwealth Government funding period. The measures will relate to the nature of what was funded in that period (from Commonwealth and other sources) and will be subject to the programs delivered including the capture of relevant data. In this way we will be able to perform an overall assessment of progress that is properly matched to operating and funding realities, changing stakeholder landscapes and the aggregate activities of the NRM community across the region.

As we have highlighted in the previous section, being able to measure the outcomes of specific initiatives is critical to demonstrating the impact of project investments, and in turn enables a stronger case to be made for future funding. We all need to contribute to make this work by including indicators for measurement into project design and sharing the outcomes of projects to make it easy to consolidate and share across the region.



The diagram below shows the different metrics that could form part of such a plan dashboard:

LEVEL OF FUNDING

- Level of Commonwealth and State Government funding available for NRM projects
- Growth rates in funding from non-Government sources vs Government

WORKING WITH NOONGAR PEOPLE

- Number of Noongar employees of NRM organisations
- Number of NRM projects integrating traditional knowledge
- Number of landholders incorporating traditional knowledge into management practices
- Noongar Corporations partner survey – perception of working with SW NRM groups

REGIONAL CAPACITY

- Community survey – NRM awareness, perceptions and actions
- Partner survey – perception of SW NRM groups' expertise and impact
- Volunteer hours committed
- Number of school incursions / excursions

BIODIVERSITY

- Habitat loss rates
- Species counts for threatened species
- Species counts for pests or invasive species
- Hectares of each native vegetation type
- Targeted pathogen counts

LAND RESOURCES

- Soil health
- Take-up of private landowner participation programs
- Implementation of farm plans
- Number of Local Governments integrating NRM into land use planning

WATER RESOURCES

- Water quality
- Counts of native vertebrates/invertebrates
- Health of riverine/wetland vegetation
- Modification to hydrology

TRAFFIC LIGHT INDICATOR BASED ON TRENDS OVER TIME



8. Building Regional Capacity

- Key Collaborations

2030 Aspiration for Regional Capacity

The value and importance of natural resources to daily life is appreciated by the broader community. The NRM industry and broader community understand and commit to sustainable actions under changing climatic conditions.

Organisations working in NRM are typically highly networked and a collaborative approach underpins successful outcomes. There are many stakeholders in the NRM industry performing a wide variety of roles such as:

- *Provision of funds*
- *Governance*
- *Project planning expertise*
- *Scientific subject matter input*
- *Owners of Traditional Knowledge*
- *Advocacy on NRM issues*
- *Access to landholders and other community groups.*

The mosaic of relationships extends across MPs and Government agencies at a Commonwealth, State and Local level. Beyond government it includes universities and other research organisations, the agricultural industry and increasingly corporates from other industries seeking to meet environmental, social and governance (ESG) objectives, as well as community groups and philanthropists. Against this backdrop, Noongar communities and landholders in the region are key NRM stakeholders and project partners.

South West NRM is unusual amongst the 54 regions of Australia in being an Association comprised of the following groups:

- *Blackwood Basin Group Inc.*
- *Blackwood Environment Society*
- *Dumbleyung Landcare Inc.*
- *Geocatch*
- *Katanning Landcare*
- *Leschenault Catchment Council*
- *Lower Blackwood Landcare*
- *Nature Conservation Margaret River Region*
- *Southern Forests Community Landcare*

South West NRM's partners on projects that are live in 2021 include CSIRO, Australian National University, Curtin University, University of Western Australia, Murdoch University, Avocados Australia, Grower Group Alliance WA, BirdLife, the Aboriginal Corporations of Badgebup, Gnowangerup and Woollkabunning Kiaka, Undalup Association, FAWNA Inc, Threshold Environmental, DAWE, DPIRD, DWER, DBCA and Market Advisory Group. This is a non-exhaustive list as South West NRM works also with many others, such as independent subject-matter experts, and is in discussion with a wider range of potential partners. Each Association Member also has its own extensive network of project partners.

At the State level, the South West NRM region sits alongside six other NRM regions in WA. These organisations collaborate continuously to influence and carry out work that achieves positive landscape-scale change. Mirrored at the national level, South West NRM is a participant in the work of NRM Regions Australia.

In developing this plan, South West NRM consulted widely with representatives from Association Members, other community Landcare groups, the Noongar community, State agencies, Local Government, the agricultural industry and landholders. In-depth interviews and workshops were conducted to ascertain any updates required to priority assets and threatening processes identified in the Plan 2014-2020 and to seek input on useability of the existing plan and how it could be improved.

9. South West NRM's Role in the Plan

South West NRM is proud to play a unique role across the region, facilitating the development of this plan and helping to connect the stakeholders who make the plan work. There are three "whole of region" activities that we will undertake to support the success of the plan.

Champion

We will champion our plan to other NRM regions across the State and across Australia, sharing our knowledge and successes and learning from others. We will represent our consolidated thinking to state and national government stakeholders, and maintain a strong stakeholder network across all key participants in our NRM success.

Connect

No single organisation can do this alone. At different times and in different ways we will all be better off sharing a problem, an approach or a solution. Our role is to look for opportunities to connect different stakeholders and build on the networks within the region for a stronger, more aligned and more successful NRM industry.

Communicate

With an undertaking this large, with many different stakeholders involved, it won't always be easy to measure how we're going. We will communicate our progress, our successes and our learnings on a regular basis, so that the plan becomes a more dynamic and active document rather than a static document we come together to review once every five years. It needs to be much more than that and we all have a strong role to play to help that happen.

What can you do?

In return, there are several things you can do. First, read this document carefully and apply the frameworks and decision-making flows to your initiatives. Second, please do talk to us if you have any questions or comments. Third, share your successes with us – if we put out a call to see how your strategies are going, please respond so we can incorporate it into our communications. Finally, please get involved. South West NRM is an association of members, and we are only as strong as the strength of that membership. If you haven't considered joining before, it's the perfect time to get on board and help to shape Regional NRM thinking and focus.

The more we all work together, the stronger our NRM region will be and the stronger case we can continue to make for funding, partnerships and a voice that will continue to be heard.



Sally Wilkinson
Chief Executive Officer
South West NRM

Appendix A

List of reference documents

The following strategies, plans and documents have all informed the plan.

General

Australian Pest Animal Strategy 2017-2027

<https://www.agriculture.gov.au/sites/default/files/sitecollectiondocuments/pests-diseases-weeds/consultation/apas-final.docx>

Australian State of Environment Report

<https://soe.environment.gov.au/>

Australian Weeds Strategy 2017-2027

<https://www.agriculture.gov.au/sites/default/files/sitecollectiondocuments/pests-diseases-weeds/consultation/aws-final.docx>

Department of Parks and Wildlife – Leeuwin-Naturaliste capes area parks and reserves Management Plan 81, 2015

https://www.dpaw.wa.gov.au/images/documents/parks/management-plans/decarchive/Leeuwin-Naturaliste_management_plan_2015_WEB.pdf

Department of Parks and Wildlife – Wheatbelt Region parks and reserves Management Plan 95, 2021

<https://www.dpaw.wa.gov.au/images/Wheatbelt%20Region%20Parks%20and%20Reserves%20Management%20Plan%202021.pdf>

National Landcare Program Regional Land Partnerships Program Logic

<http://www.nrm.gov.au/system/files/resources/9a92edba-aa2f-48ee-81fe-48c4ed47708f/files/rlp-program-logic.pdf>

Strategies of South West NRM's sub-regional landcare/NRM groups

WA Climate Policy

https://www.wa.gov.au/sites/default/files/2020-12/Western_Australian_Climate_Policy.pdf

Western Australian Natural Resource Management Framework 2018

https://www.wa.gov.au/sites/default/files/2020-08/final_-_western_australian_natural_resource_management_framework_2018_2_%20%281%29.pdf

Biodiversity

Increasing knowledge to mitigate cat impacts on biodiversity

https://wabsi.org.au/wp-content/uploads/2020/04/WABSI_Mitigating-cat-impacts_FINAL.pdf

Threat Abatement Plan for Predation by Feral Cats

https://www.wa.gov.au/sites/default/files/2020-12/Western_Australian_Climate_Policy.pdf

Threatened Species Strategy 2021 – 2031

<https://www.environment.gov.au/biodiversity/threatened/publications/threatened-species-strategy-2021-2031>

Threatened Species Action Plan 2021-2026 (in development)

<https://www.environment.gov.au/biodiversity/threatened/publications/threatened-species-strategy-2021-2031#action>

Western Australian Feral Pig Strategy 2020-2025

https://www.agric.wa.gov.au/sites/gateway/files/WA%20Feral%20Pig%20Strategy%202020-2025_1.pdf

Land Resources

National Soil Strategy

<https://www.agriculture.gov.au/sites/default/files/documents/national-soil-strategy.pdf>

Report card on sustainable natural resource use in agriculture in Western Australia

<https://researchlibrary.agric.wa.gov.au/cgi/viewcontent.cgi?article=1013&context=books>

WA Salinity Strategy

<https://www.dpaw.wa.gov.au/images/conservation-management/salinity/salinity-strategy.pdf>

Western Australian Soil Health Strategy (currently in draft)

https://www.agric.wa.gov.au/sites/gateway/files/Soil%20Health%20Strategy_REVISED_v12_C_lores.pdf

Water Resources

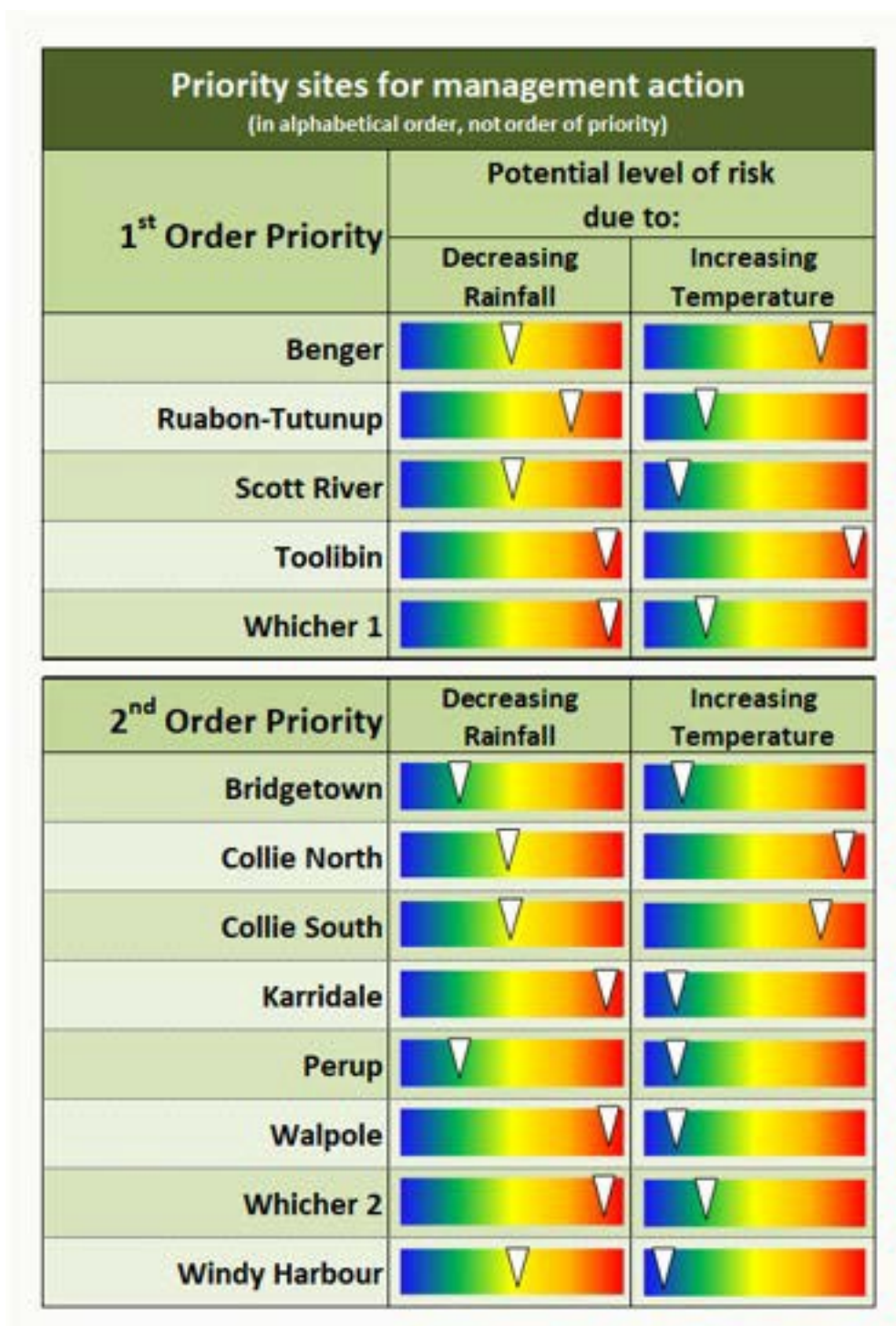
Water Quality Improvement Plans

<https://www.water.wa.gov.au/water-topics/waterways/managing-our-waterways2/water-quality-improvement-plans-wqip>

Appendix B

Predicted threat of reduced rainfall and increased temperatures on Priority Investment Areas

Predicted severity of decreasing rainfall and increasing temperatures on the priority terrestrial biodiversity assets of the South West NRM Region:



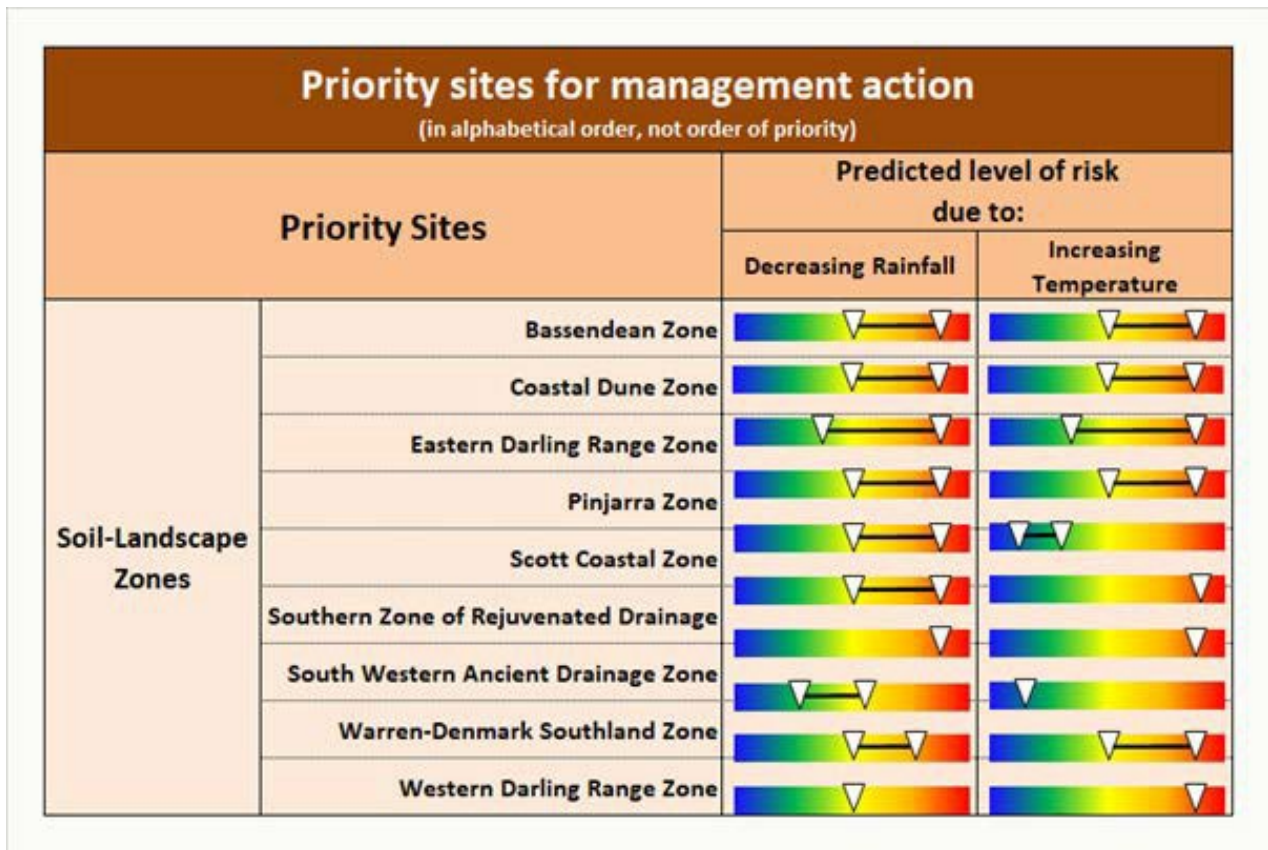
Predicted severity of decreasing rainfall and increasing temperatures on the priority aquatic biodiversity assets of the South West NRM Region:

Priority sites for management action (in alphabetical order, not order of priority)			
First Order Priority		Predicted level of risk due to:	
		Decreasing Rainfall	In creasing Temperature
Aquatic species	Balston's Pygmy Perch		
	Black Striped Minnow		
	Margaret River Burrowing Crayfish		
	Orange-bellied frog		
	White-bellied frog		
	Hairy Marron		
Wetlands	Vasse-Wonnerup (Ramsar wetland)		
	Muir-Byenup (Ramsar wetland)		
Estuaries	Leschenault Estuary		
	Harvey Estuary		
Waterways	Waterways leading into above wetlands & estuaries	Risk variable depending on location	
	Deep River		
	Donnelly River		
	Margaret River		
	Shannon River		
	Ellen, Milyean nup & Wilyabrup Brooks		
	Poison Gully		
Lakes	Lake Jasper		
Other	Commercial aquaculture	Risk variable depending on location	
Second Order Priority		Predicted level of risk due to:	
		Decreasing Rainfall	In creasing Temperature
Aquatic Species	Western Mud Minnow		
	Pouched Lamprey		
	All other endemic freshwater fish, crayfish and jellyfish species	Risk variable depending on location	
Estuaries	Leschenault Inlet		
	Hardy Inlet		
	Broke Inlet		
Waterways	Gardner River		
	Meerup River		
	Chapman Creek		
	McLeod Creek		
	Rushy Creek		
	Upper Chapman Creek		

Predicted severity of decreasing rainfall and increasing temperatures on the priority water resources of the South West NRM Region:

Priority sites for management action (in alphabetical order, not order of priority)			
First Order Priority		Predicted level of risk due to:	
		Decreasing Rainfall	Increasing Temperature
Lakes, wetlands and estuaries	Broadwater		
	Hardy Inlet		
	Harvey Estuary		
	Lake Jasper & the Gingilup-Jasper wetland system		
	Leschenault Estuary		
	Muir-Byen up System		
	Lake Preston (E side)		
Waterways	Capel River		
	Donnelly River		
	Deep River		
	Lower Blackwood River		
	Lower Scott River		
	Preston River		
	Shannon River		
	Warren River		
	Streams of the Leeuwin Ridge		
	Poison Gully		
	All waterways leading into wetlands & estuaries listed above	Risk variable depending on location	
Second Order Priority		Predicted level of risk due to:	
		Decreasing Rainfall	Increasing Temperature
Aquatic Species	Western Mud Minnow		
	Pouched Lamprey		
	All other endemic freshwater fish, crayfish and jellyfish species	Risk variable depending on location	
Estuaries	Leschenault Inlet		
	Hardy Inlet		
	Broke Inlet		
Waterways	Gardner River		
	Meerup River		
	Chapman Creek		
	McLeod Creek		
	Rushy Creek		
	Upper Chapman Creek		

Predicted severity of decreasing rainfall and increasing temperatures on the priority land resources of the South West NRM Region:



Appendix C

EPBC Act Protected Matters Report



EPBC Act Protected Matters Report

This report provides general guidance on matters of national environmental significance and other matters protected by the EPBC Act in the area you have selected. Please see the caveat for interpretation of information provided here.

Report created: 26-May-2022

[Summary](#)

[Details](#)

[Matters of NES](#)

[Other Matters Protected by the EPBC Act](#)

[Extra Information](#)

[Caveat](#)

[Acknowledgements](#)

Summary

Matters of National Environment Significance

This part of the report summarises the matters of national environmental significance that may occur in, or may relate to, the area you nominated. Further information is available in the detail part of the report, which can be accessed by scrolling or following the links below. If you are proposing to undertake an activity that may have a significant impact on one or more matters of national environmental significance then you should consider the [Administrative Guidelines on Significance](#).

World Heritage Properties:	None
National Heritage Places:	None
Wetlands of International Importance (Ramsar)	4
Great Barrier Reef Marine Park:	None
Commonwealth Marine Area:	1
Listed Threatened Ecological Communities:	14
Listed Threatened Species:	167
Listed Migratory Species:	72

Other Matters Protected by the EPBC Act

This part of the report summarises other matters protected under the Act that may relate to the area you nominated. Approval may be required for a proposed activity that significantly affects the environment on Commonwealth land, when the action is outside the Commonwealth land, or the environment anywhere when the action is taken on Commonwealth land. Approval may also be required for the Commonwealth or Commonwealth agencies proposing to take an action that is likely to have a significant impact on the

The EPBC Act protects the environment on Commonwealth land, the environment from the actions taken on Commonwealth land, and the environment from actions taken by Commonwealth agencies. As heritage values of a place are part of the 'environment', these aspects of the EPBC Act protect the Commonwealth Heritage values of a Commonwealth Heritage place. Information on the new heritage laws can be found at <http://www.environment.gov.au/heritage>

A [permit](#) may be required for activities in or on a Commonwealth area that may affect a member of a listed threatened species or ecological community, a member of a listed migratory species, whales and other cetaceans, or a member of a listed marine species.

Commonwealth Lands:	139
Commonwealth Heritage Places:	1
Listed Marine Species:	103
Whales and Other Cetaceans:	32
Critical Habitats:	None
Commonwealth Reserves Terrestrial:	None
Australian Marine Parks:	9
Habitat Critical to the Survival of Marine Turtles:	None

Extra Information

This part of the report provides information that may also be relevant to the area you have

State and Territory Reserves:	373
Regional Forest Agreements:	1
Nationally Important Wetlands:	15
EPBC Act Referrals:	250
Key Ecological Features (Marine):	2
Biologically Important Areas:	19
Bioregional Assessments:	None
Geological and Bioregional Assessments:	None

Details

Matters of National Environmental Significance

Wetlands of International Importance (Ramsar Wetlands) [\[Resource Information\]](#)

Ramsar Site Name	Proximity
Muir-byenup system	Within Ramsar site
Peel-yalgorup system	Within Ramsar site
Toolibin lake (also known as lake toolibin)	Within Ramsar site
Vasse-wonnerup system	Within Ramsar site

Commonwealth Marine Area [\[Resource Information\]](#)

Approval is required for a proposed activity that is located within the Commonwealth Marine Area which has, will have, or is likely to have a significant impact on the environment. Approval may be required for a proposed action taken outside a Commonwealth Marine Area but which has, may have or is likely to have a significant impact on the environment in the Commonwealth Marine Area.

Feature Name
EEZ and Territorial Sea

Listed Threatened Ecological Communities [\[Resource Information\]](#)

For threatened ecological communities where the distribution is well known, maps are derived from recovery plans, State vegetation maps, remote sensing imagery and other sources. Where threatened ecological community distributions are less well known, existing vegetation maps and point location data are used to produce indicative distribution maps.

Status of Vulnerable, Disallowed and Ineligible are not MNES under the EPBC Act.

Community Name	Threatened Category	Presence Text
Aquatic Root Mat Community 1 in Caves of the Leeuwin Naturaliste Ridge	Endangered	Community known to occur within area
Aquatic Root Mat Community 2 in Caves of the Leeuwin Naturaliste Ridge	Endangered	Community known to occur within area
Aquatic Root Mat Community 3 in Caves of the Leeuwin Naturaliste Ridge	Endangered	Community known to occur within area
Aquatic Root Mat Community 4 in Caves of the Leeuwin Naturaliste Ridge	Endangered	Community known to occur within area
Banksia Woodlands of the Swan Coastal Plain ecological community	Endangered	Community likely to occur within area
Clay Pans of the Swan Coastal Plain	Critically Endangered	Community likely to

Details

occur within area

Community Name	Threatened Category	Presence Text
Corymbia calophylla - Xanthorrhoea preissii woodlands and shrublands of the Swan Coastal Plain	Endangered	Community known to occur within area
Eucalypt Woodlands of the Western Australian Wheatbelt	Critically Endangered	Community likely to occur within area
Perched Wetlands of the Wheatbelt region with extensive stands of living sheoak and paperbark across the lake floor (Toolibin Lake)	Endangered	Community known to occur within area
Proteaceae Dominated Kwongkan Shrublands of the Southeast Coastal Floristic Province of Western Australia	Endangered	Community may occur within area
Scott River Ironstone Association	Endangered	Community likely to occur within area
Shrublands on southern Swan Coastal Plain ironstones	Endangered	Community likely to occur within area
Subtropical and Temperate Coastal Saltmarsh	Vulnerable	Community likely to occur within area
Tuart (Eucalyptus gomphocephala) Woodlands and Forests of the Swan Coastal Plain ecological community	Critically Endangered	Community likely to occur within area

Listed Threatened Species [\[Resource Information \]](#)

Status of Conservation Dependent and Extinct are not MNES under the EPBC Act.
Number is the current name ID.

Scientific Name	Threatened Category	Presence Text
BIRD		
Anous tenuirostris melanops Australian Lesser Noddy [26000]	Vulnerable	Species or species habitat may occur within area
Botaurus poiciloptilus Australasian Bittern [1001]	Endangered	Species or species habitat known to occur within area
Calidris canutus Red Knot, Knot [855]	Endangered	Species or species habitat known to occur within area
Calidris ferruginea		

Curlew Sandpiper [856]

Critically Endangered

Species or species
habitat known to
occur within area

Scientific Name	Threatened Category	Presence Text
Calidris tenuirostris Great Knot [862]	Critically Endangered	Foraging, feeding or related behaviour known to occur within area
Calyptorhynchus banksii naso Forest Red-tailed Black-Cockatoo, Karrak [67034]	Vulnerable	Species or species habitat known to occur within area
Charadrius leschenaultii Greater Sand Plover, Large Sand Plover [877]	Vulnerable	Species or species habitat known to occur within area
Charadrius mongolus Lesser Sand Plover, Mongolian Plover [879]	Endangered	Foraging, feeding or related behaviour known to occur within area
Diomedea amsterdamensis Amsterdam Albatross [64405]	Endangered	Species or species habitat may occur within area
Diomedea dabbenena Tristan Albatross [66471]	Endangered	Species or species habitat may occur within area
Diomedea epomophora Southern Royal Albatross [89221]	Vulnerable	Species or species habitat may occur within area
Diomedea exulans Wandering Albatross [89223]	Vulnerable	Foraging, feeding or related behaviour likely to occur within area
Diomedea sanfordi Northern Royal Albatross [64456]	Endangered	Species or species habitat may occur within area
Falco hypoleucos Grey Falcon [929]	Vulnerable	Species or species habitat may occur within area
Halobaena caerulea Blue Petrel [1059]	Vulnerable	Species or species habitat may occur within area

Scientific Name	Threatened Category	Presence Text
Leipoa ocellata Malleefowl [934]	Vulnerable	Species or species habitat known to occur within area
Limosa lapponica menzbieri Northern Siberian Bar-tailed Godwit, Russkoye Bar-tailed Godwit [86432]	Critically Endangered	Species or species habitat known to occur within area
Macronectes giganteus Southern Giant-Petrel, Southern Giant Petrel [1060]	Endangered	Species or species habitat may occur within area
Macronectes halli Northern Giant Petrel [1061]	Vulnerable	Foraging, feeding or related behaviour likely to occur within area
Numenius madagascariensis Eastern Curlew, Far Eastern Curlew [847]	Critically Endangered	Species or species habitat known to occur within area
Pachyptila turtur subantarctica Fairy Prion (southern) [64445]	Vulnerable	Species or species habitat known to occur within area
Pezoporus occidentalis Night Parrot [59350]	Endangered	Species or species habitat may occur within area
Phoebastria fusca Sooty Albatross [1075]	Vulnerable	Species or species habitat likely to occur within area
Pterodroma mollis Soft-plumaged Petrel [1036]	Vulnerable	Foraging, feeding or related behaviour known to occur within area
Rostratula australis Australian Painted Snipe [77037]	Endangered	Species or species habitat likely to occur within area
Sternula nereis nereis Australian Fairy Tern [82950]	Vulnerable	Foraging, feeding or related behaviour known to occur within area

Scientific Name	Threatened Category	Presence Text
Thalassarche carteri Indian Yellow-nosed Albatross [64464]	Vulnerable	Species or species habitat likely to occur within area
Thalassarche cauta Shy Albatross [89224]	Endangered	Foraging, feeding or related behaviour likely to occur within area
Thalassarche impavida Campbell Albatross, Campbell Black-browed Albatross [64459]	Vulnerable	Species or species habitat may occur within area
Thalassarche melanophris Black-browed Albatross [66472]	Vulnerable	Foraging, feeding or related behaviour likely to occur within area
Thalassarche steadi White-capped Albatross [64462]	Vulnerable	Species or species habitat may occur within area
Zanda baudinii listed as Calyptorhynchus baudinii Baudin's Black-Cockatoo, Long-billed Black-cockatoo [87736]	Endangered	Breeding known to occur within area
Zanda latirostris listed as Calyptorhynchus latirostris Carnaby's Black Cockatoo, Short-billed Black-cockatoo [87737]	Endangered	Breeding known to occur within area
CRUSTACEAN		
Cherax tenuimanus Hairy Marron, Margaret River Hairy Marron, Margaret River Marron [78931]	Critically Endangered	Species or species habitat known to occur within area
Engaewa pseudoreducta Margaret River Burrowing Crayfish [82674]	Critically Endangered	Species or species habitat known to occur within area
Engaewa reducta Dunsborough Burrowing Crayfish [82675]	Critically Endangered	Species or species habitat known to occur within area
Engaewa walpolea Walpole Burrowing Crayfish [82676]	Endangered	Species or species habitat known to occur within area

Scientific Name	Threatened Category	Presence Text
Galaxiella nigrostriata Blackstriped Dwarf Galaxias, Black-stripe Minnow [88677]	Endangered	Species or species habitat known to occur within area
Nannatherina balstoni Balston's Pygmy Perch [66698]	Vulnerable	Species or species habitat known to occur within area
Nannoperca pygmaea Little Pygmy Perch [88315]	Endangered	Species or species habitat known to occur within area
Thunnus maccoyii Southern Bluefin Tuna [69402]	Conservation Dependent	Species or species habitat likely to occur within area

FROG

Geocrinia alba White-bellied Frog, Creek Frog [26181]	Critically Endangered	Species or species habitat known to occur within area
Geocrinia vitellina Orange-bellied Frog [26172]	Vulnerable	Species or species habitat likely to occur within area
Spicospina flammocaerulea Sunset Frog [64782]	Vulnerable	Species or species habitat may occur within area

MAMMAL

Balaenoptera borealis Sei Whale [34]	Vulnerable	Foraging, feeding or related behaviour likely to occur within area
Balaenoptera musculus Blue Whale [36]	Endangered	Species or species habitat likely to occur within area
Balaenoptera physalus Fin Whale [37]	Vulnerable	Foraging, feeding or related behaviour likely to occur within area

Scientific Name	Threatened Category	Presence Text
Bettongia penicillata ogilbyi Woylie [66844]	Endangered	Species or species habitat known to occur within area
Dasyurus geoffroi Chuditch, Western Quoll [330]	Vulnerable	Species or species habitat known to occur within area
Eubalaena australis Southern Right Whale [40]	Endangered	Breeding known to occur within area
Macrotis lagotis Greater Bilby [282]	Vulnerable	Translocated population known to occur within area
Myrmecobius fasciatus Numbat [294]	Endangered	Species or species habitat known to occur within area
Neophoca cinerea Australian Sea-lion, Australian Sea Lion [22]	Endangered	Species or species habitat may occur within area
Parantechinus apicalis Dibbler [313]	Endangered	Species or species habitat may occur within area
Phascogale calura Red-tailed Phascogale, Red-tailed Wambenger, Kenngoor [316]	Vulnerable	Species or species habitat known to occur within area
Pseudocheirus occidentalis Western Ringtail Possum, Ngwayir, Womp, Woder, Ngoor, Ngoolangit [25911]	Critically Endangered	Breeding known to occur within area
Setonix brachyurus Quokka [229]	Vulnerable	Species or species habitat known to occur within area
OTHER		
Westralunio carteri Carter's Freshwater Mussel, Freshwater Mussel [86266]	Vulnerable	Species or species habitat known to occur within area

PLANT

Scientific Name	Threatened Category	Presence Text
Acacia brachypoda Western Wheatbelt Wattle [55594]	Endangered	Species or species habitat known to occur within area
Acacia depressa Echidna Wattle [5685]	Vulnerable	Species or species habitat known to occur within area
Acacia insolita subsp. recurva Yornaning Wattle [64495]	Endangered	Species or species habitat may occur within area
Acacia lanuginophylla Woolly Wattle [55575]	Endangered	Species or species habitat may occur within area
Acacia leptalea Chinocup Wattle [56701]	Endangered	Species or species habitat known to occur within area
Adenanthos pungens subsp. effusus Sprawling Spiky Adenanthos [10742]	Endangered	Species or species habitat known to occur within area
Adenanthos pungens subsp. pungens Spiky Adenanthos [19429]	Vulnerable	Species or species habitat known to occur within area
Andersonia annelsii [84925]	Critically Endangered	Species or species habitat known to occur within area
Andersonia gracilis Slender Andersonia [14470]	Endangered	Species or species habitat known to occur within area
Austrostipa bronwenae [87808]	Endangered	Species or species habitat known to occur within area
Austrostipa jacobiana [87809]	Critically Endangered	Species or species habitat known to occur within area

Scientific Name	Threatened Category	Presence Text
Banksia mimica Summer Honeypot [82765]	Endangered	Species or species habitat known to occur within area
Banksia nivea subsp. uliginosa Swamp Honeypot [82766]	Endangered	Species or species habitat known to occur within area
Banksia oligantha Wagin Banksia [20697]	Endangered	Species or species habitat known to occur within area
Banksia pseudoplumosa False Plumed-Banksia [82760]	Endangered	Species or species habitat may occur within area
Banksia squarrosa subsp. argillacea Whicher Range Dryandra [82769]	Vulnerable	Species or species habitat known to occur within area
Banksia verticillata Granite Banksia, Albany Banksia, River Banksia [8333]	Vulnerable	Species or species habitat likely to occur within area
Boronia capitata subsp. capitata a shrub [29156]	Endangered	Species or species habitat likely to occur within area
Boronia exilis Scott River Boronia [64844]	Endangered	Species or species habitat known to occur within area
Bossiaea sp. Frankland (E.M.Sandiford EMS 896) [89794]	Endangered	Species or species habitat known to occur within area
Brachyscias verecundus Ironstone Brachyscias [81321]	Critically Endangered	Species or species habitat known to occur within area
Caladenia bryceana subsp. bryceana Dwarf Spider-orchid [64503]	Endangered	Species or species habitat known to occur within area

Scientific Name	Threatened Category	Presence Text
Caladenia busselliana Bussell's Spider-orchid [24369]	Endangered	Species or species habitat known to occur within area
Caladenia caesarea subsp. maritima Cape Spider-orchid [64856]	Endangered	Species or species habitat known to occur within area
Caladenia christineae Christine's Spider Orchid [56716]	Vulnerable	Species or species habitat known to occur within area
Caladenia dorrienii Cossack Spider-orchid [6596]	Endangered	Species or species habitat likely to occur within area
Caladenia excelsa Giant Spider-orchid [56717]	Endangered	Species or species habitat likely to occur within area
Caladenia harringtoniae Harrington's Spider-orchid, Pink Spider-orchid [56786]	Vulnerable	Species or species habitat known to occur within area
Caladenia hoffmanii Hoffman's Spider-orchid [56719]	Endangered	Species or species habitat known to occur within area
Caladenia huegelii King Spider-orchid, Grand Spider-orchid, Rusty Spider-orchid [7309]	Endangered	Species or species habitat known to occur within area
Caladenia leucochila Collie Spider Orchid [88196]	Endangered	Species or species habitat known to occur within area
Caladenia lodgeana Lodge's Spider-orchid [68664]	Critically Endangered	Species or species habitat known to occur within area
Caladenia luteola Lemon Spider Orchid [68713]	Critically Endangered	Species or species habitat known to occur within area

Scientific Name	Threatened Category	Presence Text
Caladenia procera Carbunup King Spider Orchid [68679]	Critically Endangered	Species or species habitat known to occur within area
Caladenia viridescens Dunsborough Spider-orchid [56776]	Endangered	Species or species habitat known to occur within area
Caladenia winfieldii Majestic Spider-orchid [64504]	Endangered	Species or species habitat known to occur within area
Calectasia cyanea Blue Tinsel Lily [7669]	Critically Endangered	Species or species habitat may occur within area
Calectasia pignattiana Stilted Tinsel Lily [82018]	Vulnerable	Species or species habitat known to occur within area
Chamelaucium sp. S coastal plain (R.D.Royce 4872) Royce's Waxflower [87814]	Vulnerable	Species or species habitat known to occur within area
Commersonia apella Many-flowered Commersonia [86877]	Critically Endangered	Species or species habitat known to occur within area
Commersonia erythrogyna Trigwell's Rulingia [86397]	Endangered	Species or species habitat known to occur within area
Conostylis drummondii Drummond's Conostylis [5885]	Endangered	Species or species habitat known to occur within area
Conostylis seorsiflora subsp. trichophylla Hairy Mat Conostylis [13920]	Endangered	Species or species habitat known to occur within area
Conostylis setigera subsp. dasys Boscabel Conostylis [5775]	Critically Endangered	Species or species habitat known to occur within area

Scientific Name	Threatened Category	Presence Text
Darwinia carnea Mogumber Bell, Narrogin Bell [9736]	Endangered	Species or species habitat known to occur within area
Darwinia ferricola Scott River Darwinia [56706]	Endangered	Species or species habitat known to occur within area
Darwinia whicherensis Abba Bell [83193]	Endangered	Species or species habitat known to occur within area
Daviesia elongata subsp. elongata Long-leaved Daviesia [64883]	Vulnerable	Species or species habitat known to occur within area
Daviesia euphorbioides Wongan Cactus [3477]	Endangered	Species or species habitat likely to occur within area
Diuris drummondii Tall Donkey Orchid [4365]	Vulnerable	Species or species habitat known to occur within area
Diuris micrantha Dwarf Bee-orchid [55082]	Vulnerable	Species or species habitat known to occur within area
Diuris purdiei Purdie's Donkey-orchid [12950]	Endangered	Species or species habitat known to occur within area
Drakaea confluens Late Hammer-orchid [56778]	Endangered	Species or species habitat known to occur within area
Drakaea elastica Glossy-leaved Hammer Orchid, Glossy-leaved Hammer Orchid, Warty Hammer Orchid [16753]	Endangered	Species or species habitat known to occur within area
Drakaea micrantha Dwarf Hammer-orchid [56755]	Vulnerable	Species or species habitat known to occur within area

Scientific Name	Threatened Category	Presence Text
Duma horrida subsp. abdita Remote Thorny Lignum [87538]	Critically Endangered	Species or species habitat may occur within area
Eleocharis keigheryi Keighery's Eleocharis [64893]	Vulnerable	Species or species habitat known to occur within area
Eremophila verticillata Whorled Eremophila [7032]	Endangered	Species or species habitat likely to occur within area
Eucalyptus x phylacis Meelup Mallee [87817]	Endangered	Species or species habitat known to occur within area
Gastrolobium argyrotichum Metricup Pea [89145]	Critically Endangered	Species or species habitat known to occur within area
Gastrolobium lehmannii Cranbrook Pea [22282]	Vulnerable	Species or species habitat known to occur within area
Gastrolobium modestum Broad-leaved Gastrolobium [78361]	Vulnerable	Species or species habitat known to occur within area
Gastrolobium papilio Butterfly-leaved Gastrolobium [78415]	Endangered	Species or species habitat known to occur within area
Goodenia arthrotricha [12448]	Endangered	Species or species habitat known to occur within area
Grevillea acropogon [68272]	Endangered	Species or species habitat known to occur within area
Grevillea brachystylis subsp. australis [55525]	Vulnerable	Species or species habitat likely to occur within area

Scientific Name	Threatened Category	Presence Text
Grevillea brachystylis subsp. grandis Large-flowered Short-styled Grevillea [85001]	Critically Endangered	Species or species habitat known to occur within area
Grevillea elongata Ironstone Grevillea [64578]	Vulnerable	Species or species habitat known to occur within area
Grevillea maccutcheonii McCutcheon's Grevillea [64522]	Endangered	Species or species habitat known to occur within area
Grevillea rara Rare Grevillea [64911]	Endangered	Species or species habitat known to occur within area
Hemigenia ramosissima Branched Hemigenia [18568]	Critically Endangered	Species or species habitat known to occur within area
Jacksonia velveta Collie Jacksonia [82671]	Endangered	Species or species habitat likely to occur within area
Kennedia glabrata Northcliffe Kennedia [16452]	Vulnerable	Species or species habitat likely to occur within area
Kennedia lateritia Augusta Kennedia [45985]	Endangered	Species or species habitat likely to occur within area
Lambertia echinata subsp. occidentalis Western Prickly Honeysuckle [64528]	Endangered	Species or species habitat known to occur within area
Lambertia orbifolia Roundleaf Honeysuckle [15725]	Endangered	Species or species habitat known to occur within area
Leptomeria dielsiana Diels' Currant Bush [5146]	Vulnerable	Species or species habitat known to occur within area

Scientific Name	Threatened Category	Presence Text
<u>Leucopogon sp. Ongerup (A.S. George 16682)</u> [85018]	Vulnerable	Species or species habitat known to occur within area
<u>Microtis globula</u> South-Coast Mignonette Orchid [6780]	Vulnerable	Species or species habitat likely to occur within area
<u>Petrophile latericola</u> Laterite Petrophile [64532]	Endangered	Species or species habitat known to occur within area
<u>Pultenaea pauciflora</u> Narrogin Pea [14013]	Vulnerable	Species or species habitat known to occur within area
<u>Reedia spathacea</u> Reedia [2995]	Critically Endangered	Species or species habitat known to occur within area
<u>Roycea pycnophylloides</u> Saltmat [21161]	Endangered	Species or species habitat likely to occur within area
<u>Sphenotoma drummondii</u> Mountain Paper-heath [21160]	Endangered	Species or species habitat may occur within area
<u>Synaphea sp. Fairbridge Farm (D. Papenfus 696)</u> Selena's Synaphea [82881]	Critically Endangered	Species or species habitat known to occur within area
<u>Synaphea sp. Pinjarra Plain (A.S. George 17182)</u> [86878]	Endangered	Species or species habitat known to occur within area
<u>Synaphea sp. Serpentine (G.R. Brand 103)</u> [86879]	Critically Endangered	Species or species habitat known to occur within area
<u>Synaphea stenoloba</u> Dwellingup Synaphea [66311]	Endangered	Species or species habitat known to occur within area

Scientific Name	Threatened Category	Presence Text
Tetraria australiensis Southern Tetraria [10137]	Vulnerable	Species or species habitat known to occur within area
Thelymitra stellata Star Sun-orchid [7060]	Endangered	Species or species habitat known to occur within area
Tribonanthes purpurea Granite Pink [16244]	Vulnerable	Species or species habitat known to occur within area
Verticordia carinata Stirling Range Featherflower [24342]	Vulnerable	Species or species habitat known to occur within area
Verticordia densiflora var. pedunculata Long-stalked Featherflower [55689]	Endangered	Species or species habitat known to occur within area
Verticordia fimbrialepis subsp. fimbrialepis Shy Featherflower [24631]	Endangered	Species or species habitat known to occur within area
Verticordia plumosa var. ananeotes Tufted Plumed Featherflower [23871]	Endangered	Species or species habitat known to occur within area
Verticordia plumosa var. vassensis Vasse Featherflower [55804]	Endangered	Species or species habitat known to occur within area
Verticordia staminosa var. cylindracea Granite Featherflower [55823]	Endangered	Species or species habitat likely to occur within area
Wurmbea calcicola Naturaliste Nancy [64691]	Endangered	Species or species habitat known to occur within area
REPTILE		
Caretta caretta Loggerhead Turtle [1763]	Endangered	Foraging, feeding or related behaviour known to occur within area

Scientific Name	Threatened Category	Presence Text
Chelonia mydas Green Turtle [1765]	Vulnerable	Foraging, feeding or related behaviour known to occur within area
Dermochelys coriacea Leatherback Turtle, Leathery Turtle, Luth [1768]	Endangered	Breeding likely to occur within area
Natator depressus Flatback Turtle [59257]	Vulnerable	Foraging, feeding or related behaviour known to occur within area
SHARK		
Carcharias taurus (west coast population) Grey Nurse Shark (west coast population) [68752]	Vulnerable	Species or species habitat known to occur within area
Carcharodon carcharias White Shark, Great White Shark [64470]	Vulnerable	Foraging, feeding or related behaviour known to occur within area
Galeorhinus galeus School Shark, Eastern School Shark, Snapper Shark, Tope, Soupfin Shark [68453]	Conservation Dependent	Species or species habitat may occur within area
Pristis pristis Freshwater Sawfish, Largetooth Sawfish, River Sawfish, Leichhardt's Sawfish, Northern Sawfish [60756]	Vulnerable	Species or species habitat may occur within area
Rhincodon typus Whale Shark [66680]	Vulnerable	Species or species habitat may occur within area
Sphyrna lewini Scalloped Hammerhead [85267]	Conservation Dependent	Species or species habitat known to occur within area
SPIDER		
Bertmainius tingle Tingle Pygmy Trapdoor Spider [89126]	Endangered	Species or species habitat known to occur within area

Scientific Name	Threatened Category	Presence Text
Chelonia mydas		
Green Turtle [1765]	Vulnerable	Foraging, feeding or related behaviour
Scientific Name	Threatened Category	Presence Text
Migratory Marine Birds		

Scientific Name	Threatened Category	Presence Text
Anous stolidus Common Noddy [825]		Species or species habitat may occur within area
Apus pacificus Fork-tailed Swift [678]		Species or species habitat likely to occur within area
Ardena carneipes Flesh-footed Shearwater, Fleshy-footed Shearwater [82404]		Breeding known to occur within area
Ardena grisea Sooty Shearwater [82651]		Species or species habitat may occur within area
Diomedea amsterdamensis Amsterdam Albatross [64405]	Endangered	Species or species habitat may occur within area
Diomedea dabbenena Tristan Albatross [66471]	Endangered	Species or species habitat may occur within area
Diomedea epomophora Southern Royal Albatross [89221]	Vulnerable	Species or species habitat may occur within area
Diomedea exulans Wandering Albatross [89223]	Vulnerable	Foraging, feeding or related behaviour likely to occur within area
Diomedea sanfordi Northern Royal Albatross [64456]	Endangered	Species or species habitat may occur within area
Hydroprogne caspia Caspian Tern [808]		Breeding known to occur within area
Macronectes giganteus Southern Giant-Petrel, Southern Giant Petrel [1060]	Endangered	Species or species habitat may occur within area

Scientific Name	Threatened Category	Presence Text
Macronectes halli Northern Giant Petrel [1061]	Vulnerable	Foraging, feeding or related behaviour likely to occur within area
Onychoprion anaethetus Bridled Tern [82845]		Breeding known to occur within area
Phaethon rubricauda Red-tailed Tropicbird [994]		Breeding known to occur within area
Phoebastria fusca Sooty Albatross [1075]	Vulnerable	Species or species habitat likely to occur within area
Thalassarche carteri Indian Yellow-nosed Albatross [64464]	Vulnerable	Species or species habitat likely to occur within area
Thalassarche cauta Shy Albatross [89224]	Endangered	Foraging, feeding or related behaviour likely to occur within area
Thalassarche impavida Campbell Albatross, Campbell Black-browed Albatross [64459]	Vulnerable	Species or species habitat may occur within area
Thalassarche melanophris Black-browed Albatross [66472]	Vulnerable	Foraging, feeding or related behaviour likely to occur within area
Thalassarche steadi White-capped Albatross [64462]	Vulnerable	Species or species habitat may occur within area
Migratory Marine Species		
Balaenoptera borealis Sei Whale [34]	Vulnerable	Foraging, feeding or related behaviour likely to occur within area
Balaenoptera edeni Bryde's Whale [35]		Species or species habitat may occur within area

Scientific Name	Threatened Category	Presence Text
Balaenoptera musculus Blue Whale [36]	Endangered	Species or species habitat likely to occur within area
Balaenoptera physalus Fin Whale [37]	Vulnerable	Foraging, feeding or related behaviour likely to occur within area
Caperea marginata Pygmy Right Whale [39]		Foraging, feeding or related behaviour likely to occur within area
Carcharhinus longimanus Oceanic Whitetip Shark [84108]		Species or species habitat may occur within area
Carcharodon carcharias White Shark, Great White Shark [64470]	Vulnerable	Foraging, feeding or related behaviour known to occur within area
Caretta caretta Loggerhead Turtle [1763]	Endangered	Foraging, feeding or related behaviour known to occur within area
Chelonia mydas Green Turtle [1765]	Vulnerable	Foraging, feeding or related behaviour known to occur within area
Dermochelys coriacea Leatherback Turtle, Leathery Turtle, Luth [1768]	Endangered	Breeding likely to occur within area
Eubalaena australis as Balaena glacialis australis Southern Right Whale [40]	Endangered	Breeding known to occur within area
Lagenorhynchus obscurus Dusky Dolphin [43]		Species or species habitat may occur within area
Lamna nasus Porbeagle, Mackerel Shark [83288]		Species or species habitat may occur within area

Scientific Name	Threatened Category	Presence Text
Megaptera novaeangliae Humpback Whale [38]		Foraging, feeding or related behaviour known to occur within area
Mobula alfredi as Manta alfredi Reef Manta Ray, Coastal Manta Ray [90033]		Species or species habitat likely to occur within area
Mobula birostris as Manta birostris Giant Manta Ray [90034]		Species or species habitat likely to occur within area
Natator depressus Flatback Turtle [59257]	Vulnerable	Foraging, feeding or related behaviour known to occur within area
Orcinus orca Killer Whale, Orca [46]		Species or species habitat may occur within area
Physeter macrocephalus Sperm Whale [59]		Species or species habitat may occur within area
Pristis pristis Freshwater Sawfish, Largetooth Sawfish, River Sawfish, Leichhardt's Sawfish, Northern Sawfish [60756]	Vulnerable	Species or species habitat may occur within area
Rhincodon typus Whale Shark [66680]	Vulnerable	Species or species habitat may occur within area
Migratory Terrestrial Species		
Motacilla cinerea Grey Wagtail [642]		Species or species habitat known to occur within area
Migratory Wetlands Species		
Actitis hypoleucos Common Sandpiper [59309]		Species or species habitat known to occur within area

Scientific Name	Threatened Category	Presence Text
Arenaria interpres Ruddy Turnstone [872]		Foraging, feeding or related behaviour known to occur within area
Calidris acuminata Sharp-tailed Sandpiper [874]		Foraging, feeding or related behaviour known to occur within area
Calidris alba Sanderling [875]		Foraging, feeding or related behaviour known to occur within area
Calidris canutus Red Knot, Knot [855]	Endangered	Species or species habitat known to occur within area
Calidris ferruginea Curlew Sandpiper [856]	Critically Endangered	Species or species habitat known to occur within area
Calidris melanotos Pectoral Sandpiper [858]		Species or species habitat known to occur within area
Calidris ruficollis Red-necked Stint [860]		Foraging, feeding or related behaviour known to occur within area
Calidris subminuta Long-toed Stint [861]		Foraging, feeding or related behaviour known to occur within area
Calidris tenuirostris Great Knot [862]	Critically Endangered	Foraging, feeding or related behaviour known to occur within area
Charadrius bicinctus Double-banded Plover [895]		Species or species habitat known to occur within area

Scientific Name	Threatened Category	Presence Text
Charadrius leschenaultii Greater Sand Plover, Large Sand Plover [877]	Vulnerable	Species or species habitat known to occur within area
Charadrius mongolus Lesser Sand Plover, Mongolian Plover [879]	Endangered	Foraging, feeding or related behaviour known to occur within area
Gallinago megala Swinhoe's Snipe [864]		Foraging, feeding or related behaviour likely to occur within area
Gallinago stenura Pin-tailed Snipe [841]		Foraging, feeding or related behaviour likely to occur within area
Limicola falcinellus Broad-billed Sandpiper [842]		Foraging, feeding or related behaviour known to occur within area
Limosa lapponica Bar-tailed Godwit [844]		Species or species habitat known to occur within area
Limosa limosa Black-tailed Godwit [845]		Foraging, feeding or related behaviour known to occur within area
Numenius madagascariensis Eastern Curlew, Far Eastern Curlew [847]	Critically Endangered	Species or species habitat known to occur within area
Numenius minutus Little Curlew, Little Whimbrel [848]		Foraging, feeding or related behaviour likely to occur within area
Numenius phaeopus Whimbrel [849]		Foraging, feeding or related behaviour known to occur within area

Scientific Name	Threatened Category	Presence Text
Pandion haliaetus Osprey [952]		Breeding known to occur within area
Philomachus pugnax Ruff (Reeve) [850]		Foraging, feeding or related behaviour known to occur within area
Pluvialis fulva Pacific Golden Plover [25545]		Foraging, feeding or related behaviour known to occur within area
Thalasseus bergii Greater Crested Tern [83000]		Breeding known to occur within area
Tringa brevipes Grey-tailed Tattler [851]		Foraging, feeding or related behaviour known to occur within area
Tringa glareola Wood Sandpiper [829]		Foraging, feeding or related behaviour known to occur within area
Tringa nebularia Common Greenshank, Greenshank [832]		Species or species habitat known to occur within area
Tringa stagnatilis Marsh Sandpiper, Little Greenshank [833]		Foraging, feeding or related behaviour known to occur within area
Tringa totanus Common Redshank, Redshank [835]		Foraging, feeding or related behaviour known to occur within area

Other Matters Protected by the EPBC Act

Commonwealth Lands

[\[Resource Information \]](#)

The Commonwealth area listed below may indicate the presence of Commonwealth land in this vicinity. Due to the unreliability of the data source, all proposals should be checked as to whether it impacts on a Commonwealth area, before making a definitive decision. Contact the State or Territory government land department for further information.

Commonwealth Land Name	State
Defence	
Defence - BUNBURY TRAINING DEPOT [50142]	WA
Defence - KATANNING TRAINING DEPOT [50157]	WA
Unknown	
Commonwealth Land - [51990]	WA
Commonwealth Land - [51991]	WA
Commonwealth Land - [51010]	WA
Commonwealth Land - [52046]	WA
Commonwealth Land - [50304]	WA
Commonwealth Land - [50301]	WA
Commonwealth Land - [50956]	WA
Commonwealth Land - [50959]	WA
Commonwealth Land - [50314]	WA
Commonwealth Land - [50957]	WA
Commonwealth Land - [50960]	WA
Commonwealth Land - [51995]	WA
Commonwealth Land - [50813]	WA
Commonwealth Land - [50811]	WA
Commonwealth Land - [50764]	WA
Commonwealth Land - [50360]	WA
Commonwealth Land - [50967]	WA
Commonwealth Land - [50964]	WA
Commonwealth Land - [50963]	WA
Commonwealth Land - [51992]	WA

Commonwealth Land Name	State
Commonwealth Land - [52209]	WA
Commonwealth Land - [52208]	WA
Commonwealth Land - [50830]	WA
Commonwealth Land - [51551]	WA
Commonwealth Land - [51000]	WA
Commonwealth Land - [51008]	WA
Commonwealth Land - [51009]	WA
Commonwealth Land - [51550]	WA
Commonwealth Land - [52121]	WA
Commonwealth Land - [52018]	WA
Commonwealth Land - [50390]	WA
Commonwealth Land - [52124]	WA
Commonwealth Land - [50394]	WA
Commonwealth Land - [50395]	WA
Commonwealth Land - [50397]	WA
Commonwealth Land - [50399]	WA
Commonwealth Land - [50398]	WA
Commonwealth Land - [51131]	WA
Commonwealth Land - [50384]	WA
Commonwealth Land - [50382]	WA
Commonwealth Land - [50386]	WA
Commonwealth Land - [50387]	WA
Commonwealth Land - [50389]	WA
Commonwealth Land - [52013]	WA
Commonwealth Land - [51529]	WA
Commonwealth Land - [51520]	WA
Commonwealth Land - [51527]	WA

Commonwealth Land Name	State
Commonwealth Land - [50383]	WA
Commonwealth Land - [51395]	WA
Commonwealth Land - [52222]	WA
Commonwealth Land - [52061]	WA
Commonwealth Land - [52060]	WA
Commonwealth Land - [50388]	WA
Commonwealth Land - [50435]	WA
Commonwealth Land - [52069]	WA
Commonwealth Land - [52067]	WA
Commonwealth Land - [50961]	WA
Commonwealth Land - [50962]	WA
Commonwealth Land - [51483]	WA
Commonwealth Land - [52075]	WA
Commonwealth Land - [50607]	WA
Commonwealth Land - [50353]	WA
Commonwealth Land - [50356]	WA
Commonwealth Land - [52225]	WA
Commonwealth Land - [52073]	WA
Commonwealth Land - [51535]	WA
Commonwealth Land - [51536]	WA
Commonwealth Land - [51532]	WA
Commonwealth Land - [50969]	WA
Commonwealth Land - [52050]	WA
Commonwealth Land - [50802]	WA
Commonwealth Land - [52052]	WA
Commonwealth Land - [52048]	WA
Commonwealth Land - [51646]	WA

Commonwealth Land Name	State
Commonwealth Land - [50744]	WA
Commonwealth Land - [52159]	WA
Commonwealth Land - [51500]	WA
Commonwealth Land - [50348]	WA
Commonwealth Land - [51616]	WA
Commonwealth Land - [50896]	WA
Commonwealth Land - [52138]	WA
Commonwealth Land - [52139]	WA
Commonwealth Land - [50411]	WA
Commonwealth Land - [52132]	WA
Commonwealth Land - [52005]	WA
Commonwealth Land - [51110]	WA
Commonwealth Land - [52000]	WA
Commonwealth Land - [52004]	WA
Commonwealth Land - [52032]	WA
Commonwealth Land - [52039]	WA
Commonwealth Land - [51105]	WA
Commonwealth Land - [51107]	WA
Commonwealth Land - [52033]	WA
Commonwealth Land - [51611]	WA
Commonwealth Land - [51103]	WA
Commonwealth Land - [51108]	WA
Commonwealth Land - [51618]	WA
Commonwealth Land - [51610]	WA
Commonwealth Land - [50406]	WA
Commonwealth Land - [50407]	WA
Commonwealth Land - [51623]	WA

Commonwealth Land Name	State
Commonwealth Land - [51629]	WA
Commonwealth Land - [52034]	WA
Commonwealth Land - [52030]	WA
Commonwealth Land - [50409]	WA
Commonwealth Land - [51609]	WA
Commonwealth Land - [50403]	WA
Commonwealth Land - [50400]	WA
Commonwealth Land - [52117]	WA
Commonwealth Land - [50985]	WA
Commonwealth Land - [52113]	WA
Commonwealth Land - [52112]	WA
Commonwealth Land - [52025]	WA
Commonwealth Land - [52022]	WA
Commonwealth Land - [51624]	WA
Commonwealth Land - [51630]	WA
Commonwealth Land - [50986]	WA
Commonwealth Land - [51121]	WA
Commonwealth Land - [51482]	WA
Commonwealth Land - [51480]	WA
Commonwealth Land - [50996]	WA
Commonwealth Land - [50995]	WA
Commonwealth Land - [50269]	WA
Commonwealth Land - [50268]	WA
Commonwealth Land - [51488]	WA
Commonwealth Land - [51487]	WA
Commonwealth Land - [50994]	WA
Commonwealth Land - [50993]	WA

Commonwealth Land Name	State
Commonwealth Land - [50992]	WA
Commonwealth Land - [51490]	WA
Commonwealth Land - [50991]	WA
Commonwealth Land - [50857]	WA
Commonwealth Land - [52148]	WA
Commonwealth Land - [52143]	WA
Commonwealth Land - [51037]	WA
Commonwealth Land - [52216]	WA
Commonwealth Land - [52144]	WA

Commonwealth Heritage Places [Resource Information]		
Name	State	Status
Historic		
Cape Leeuwin Lighthouse	WA	Listed place

Listed Marine Species [Resource Information]		
Scientific Name	Threatened Category	Presence Text
Bird		
Actitis hypoleucos Common Sandpiper [59309]		Species or species habitat known to occur within area
Anous stolidus Common Noddy [825]		Species or species habitat may occur within area
Anous tenuirostris melanops Australian Lesser Noddy [26000]	Vulnerable	Species or species habitat may occur within area
Apus pacificus Fork-tailed Swift [678]		Species or species habitat likely to occur within area overfly marine area
Ardenna carneipes as Puffinus carneipes Flesh-footed Shearwater, Fleshy-footed Shearwater [82404]		Breeding known to occur within area

Scientific Name	Threatened Category	Presence Text
Ardena grisea as Puffinus griseus Sooty Shearwater [82651]		Species or species habitat may occur within area
Arenaria interpres Ruddy Turnstone [872]		Foraging, feeding or related behaviour known to occur within area
Bubulcus ibis as Ardea ibis Cattle Egret [66521]		Species or species habitat may occur within area overfly marine area
Calidris acuminata Sharp-tailed Sandpiper [874]		Foraging, feeding or related behaviour known to occur within area
Calidris alba Sanderling [875]		Foraging, feeding or related behaviour known to occur within area
Calidris canutus Red Knot, Knot [855]	Endangered	Species or species habitat known to occur within area overfly marine area
Calidris ferruginea Curlew Sandpiper [856]	Critically Endangered	Species or species habitat known to occur within area overfly marine area
Calidris melanotos Pectoral Sandpiper [858]		Species or species habitat known to occur within area overfly marine area
Calidris ruficollis Red-necked Stint [860]		Foraging, feeding or related behaviour known to occur within area overfly marine area

Scientific Name	Threatened Category	Presence Text
Calidris subminuta Long-toed Stint [861]		Foraging, feeding or related behaviour known to occur within area overfly marine area
Calidris tenuirostris Great Knot [862]	Critically Endangered	Foraging, feeding or related behaviour known to occur within area overfly marine area
Chalcites osculans as Chrysococcyx osculans Black-eared Cuckoo [83425]		Species or species habitat known to occur within area overfly marine area
Charadrius bicinctus Double-banded Plover [895]		Species or species habitat known to occur within area overfly marine area
Charadrius leschenaultii Greater Sand Plover, Large Sand Plover [877]	Vulnerable	Species or species habitat known to occur within area
Charadrius mongolus Lesser Sand Plover, Mongolian Plover [879]	Endangered	Foraging, feeding or related behaviour known to occur within area
Charadrius ruficapillus Red-capped Plover [881]		Foraging, feeding or related behaviour known to occur within area overfly marine area
Chroicocephalus novaehollandiae as Larus novaehollandiae Silver Gull [82326]		Breeding known to occur within area
Diomedea amsterdamensis Amsterdam Albatross [64405]	Endangered	Species or species habitat may occur within area
Diomedea dabbenena Tristan Albatross [66471]	Endangered	Species or species habitat may occur within area

Scientific Name	Threatened Category	Presence Text
Diomedea epomophora Southern Royal Albatross [89221]	Vulnerable	Species or species habitat may occur within area
Diomedea exulans Wandering Albatross [89223]	Vulnerable	Foraging, feeding or related behaviour likely to occur within area
Diomedea sanfordi Northern Royal Albatross [64456]	Endangered	Species or species habitat may occur within area
Eudyptula minor Little Penguin [1085]		Breeding known to occur within area
Gallinago megala Swinhoe's Snipe [864]		Foraging, feeding or related behaviour likely to occur within area overfly marine area
Gallinago stenura Pin-tailed Snipe [841]		Foraging, feeding or related behaviour likely to occur within area overfly marine area
Haliaeetus leucogaster White-bellied Sea-Eagle [943]		Species or species habitat known to occur within area
Halobaena caerulea Blue Petrel [1059]	Vulnerable	Species or species habitat may occur within area
Himantopus himantopus Pied Stilt, Black-winged Stilt [870]		Foraging, feeding or related behaviour known to occur within area overfly marine area
Hydroprogne caspia as Sterna caspia Caspian Tern [808]		Breeding known to occur within area

Scientific Name	Threatened Category	Presence Text
Larus pacificus Pacific Gull [811]		Foraging, feeding or related behaviour known to occur within area
Limicola falcinellus Broad-billed Sandpiper [842]		Foraging, feeding or related behaviour known to occur within area overfly marine area
Limosa lapponica Bar-tailed Godwit [844]		Species or species habitat known to occur within area
Limosa limosa Black-tailed Godwit [845]		Foraging, feeding or related behaviour known to occur within area overfly marine area
Macronectes giganteus Southern Giant-Petrel, Southern Giant Petrel [1060]	Endangered	Species or species habitat may occur within area
Macronectes halli Northern Giant Petrel [1061]	Vulnerable	Foraging, feeding or related behaviour likely to occur within area
Merops ornatus Rainbow Bee-eater [670]		Species or species habitat may occur within area overfly marine area
Motacilla cinerea Grey Wagtail [642]		Species or species habitat known to occur within area overfly marine area
Numenius madagascariensis Eastern Curlew, Far Eastern Curlew [847]	Critically Endangered	Species or species habitat known to occur within area

Scientific Name	Threatened Category	Presence Text
Numenius minutus Little Curlew, Little Whimbrel [848]		Foraging, feeding or related behaviour likely to occur within area overfly marine area
Numenius phaeopus Whimbrel [849]		Foraging, feeding or related behaviour known to occur within area
Onychoprion anaethetus as Sterna anaethetus Bridled Tern [82845]		Breeding known to occur within area
Onychoprion fuscatus as Sterna fuscata Sooty Tern [90682]		Breeding known to occur within area
Pachyptila turtur Fairy Prion [1066]		Species or species habitat known to occur within area
Pandion haliaetus Osprey [952]		Breeding known to occur within area
Pelagodroma marina White-faced Storm-Petrel [1016]		Breeding known to occur within area
Phaethon rubricauda Red-tailed Tropicbird [994]		Breeding known to occur within area
Philomachus pugnax Ruff (Reeve) [850]		Foraging, feeding or related behaviour known to occur within area overfly marine area
Phoebastria fusca Sooty Albatross [1075]	Vulnerable	Species or species habitat likely to occur within area
Pluvialis fulva Pacific Golden Plover [25545]		Foraging, feeding or related behaviour known to occur within area

Scientific Name	Threatened Category	Presence Text
Pterodroma mollis Soft-plumaged Petrel [1036]	Vulnerable	Foraging, feeding or related behaviour known to occur within area
Puffinus assimilis Little Shearwater [59363]		Breeding known to occur within area
Recurvirostra novaehollandiae Red-necked Avocet [871]		Foraging, feeding or related behaviour known to occur within area overfly marine area
Rostratula australis as Rostratula benghalensis (sensu lato) Australian Painted Snipe [77037]	Endangered	Species or species habitat likely to occur within area overfly marine area
Stercorarius skua as Catharacta skua Great Skua [823]		Species or species habitat may occur within area
Sternula nereis as Sterna nereis Fairy Tern [82949]		Breeding known to occur within area
Thalassarche carteri Indian Yellow-nosed Albatross [64464]	Vulnerable	Species or species habitat likely to occur within area
Thalassarche cauta Shy Albatross [89224]	Endangered	Foraging, feeding or related behaviour likely to occur within area
Thalassarche impavida Campbell Albatross, Campbell Black-browed Albatross [64459]	Vulnerable	Species or species habitat may occur within area
Thalassarche melanophris Black-browed Albatross [66472]	Vulnerable	Foraging, feeding or related behaviour likely to occur within area

Scientific Name	Threatened Category	Presence Text
Thalassarche steadi White-capped Albatross [64462]	Vulnerable	Species or species habitat may occur within area
Thalasseus bergii as Sterna bergii Greater Crested Tern [83000]		Breeding known to occur within area
Thinornis cucullatus as Thinornis rubricollis Hooded Dotterel, Hooded Plover [87735]		Species or species habitat known to occur within area overfly marine area
Tringa brevipes as Heteroscelus brevipes Grey-tailed Tattler [851]		Foraging, feeding or related behaviour known to occur within area
Tringa glareola Wood Sandpiper [829]		Foraging, feeding or related behaviour known to occur within area overfly marine area
Tringa nebularia Common Greenshank, Greenshank [832]		Species or species habitat known to occur within area overfly marine area
Tringa stagnatilis Marsh Sandpiper, Little Greenshank [833]		Foraging, feeding or related behaviour known to occur within area overfly marine area
Tringa totanus Common Redshank, Redshank [835]		Foraging, feeding or related behaviour known to occur within area overfly marine area
Fish		
Acentronura australe Southern Pygmy Pipehorse [66185]		Species or species habitat may occur within area

Scientific Name	Threatened Category	Presence Text
Campichthys galei Gale's Pipefish [66191]		Species or species habitat may occur within area
Heraldia nocturna Upside-down Pipefish, Eastern Upside-down Pipefish, Eastern Upside-down Pipefish [66227]		Species or species habitat may occur within area
Hippocampus angustus Western Spiny Seahorse, Narrow-bellied Seahorse [66234]		Species or species habitat may occur within area
Hippocampus breviceps Short-head Seahorse, Short-snouted Seahorse [66235]		Species or species habitat may occur within area
Hippocampus subelongatus West Australian Seahorse [66722]		Species or species habitat may occur within area
Histiogamphelus cristatus Rhino Pipefish, Macleay's Crested Pipefish, Ring-back Pipefish [66243]		Species or species habitat may occur within area
Leptoichthys fistularius Brushtail Pipefish [66248]		Species or species habitat may occur within area
Lissocampus caudalis Australian Smooth Pipefish, Smooth Pipefish [66249]		Species or species habitat may occur within area
Lissocampus fatiloquus Prophet's Pipefish [66250]		Species or species habitat may occur within area
Lissocampus runa Javelin Pipefish [66251]		Species or species habitat may occur within area
Maroubra perserrata Sawtooth Pipefish [66252]		Species or species habitat may occur within area

Scientific Name	Threatened Category	Presence Text
Mitotichthys meraculus Western Crested Pipefish [66259]		Species or species habitat may occur within area
Nannocampus subosseus Bonyhead Pipefish, Bony-headed Pipefish [66264]		Species or species habitat may occur within area
Notiocampus ruber Red Pipefish [66265]		Species or species habitat may occur within area
Phycodurus eques Leafy Seadragon [66267]		Species or species habitat may occur within area
Phyllopteryx taeniolatus Common Seadragon, Weedy Seadragon [66268]		Species or species habitat may occur within area
Pugnaso curtirostris Pugnose Pipefish, Pug-nosed Pipefish [66269]		Species or species habitat may occur within area
Solegnathus lettiensis Gunther's Pipehorse, Indonesian Pipefish [66273]		Species or species habitat may occur within area
Stigmatopora argus Spotted Pipefish, Gulf Pipefish, Peacock Pipefish [66276]		Species or species habitat may occur within area
Stigmatopora nigra Widebody Pipefish, Wide-bodied Pipefish, Black Pipefish [66277]		Species or species habitat may occur within area
Urocampus carinirostris Hairy Pipefish [66282]		Species or species habitat may occur within area
Vanacampus margaritifer Mother-of-pearl Pipefish [66283]		Species or species habitat may occur within area

Scientific Name	Threatened Category	Presence Text
Vanacampus phillipi Port Phillip Pipefish [66284]		Species or species habitat may occur within area
Vanacampus poecilolaemus Longsnout Pipefish, Australian Longsnout Pipefish, Long-snouted Pipefish [66285]		Species or species habitat may occur within area

Mammal

Arctocephalus forsteri Long-nosed Fur-seal, New Zealand Fur-seal [20]		Breeding known to occur within area
Neophoca cinerea Australian Sea-lion, Australian Sea Lion [22]	Endangered	Species or species habitat may occur within area

Reptile

Caretta caretta Loggerhead Turtle [1763]	Endangered	Foraging, feeding or related behaviour known to occur within area
Chelonia mydas Green Turtle [1765]	Vulnerable	Foraging, feeding or related behaviour known to occur within area
Dermochelys coriacea Leatherback Turtle, Leathery Turtle, Luth [1768]	Endangered	Breeding likely to occur within area
Natator depressus Flatback Turtle [59257]	Vulnerable	Foraging, feeding or related behaviour known to occur within area

Whales and Other Cetaceans [\[Resource Information \]](#)

Current Scientific Name	Status	Type of Presence
Mammal		
Balaenoptera acutorostrata Minke Whale [33]		Species or species habitat may occur within area
Balaenoptera borealis Sei Whale [34]	Vulnerable	Foraging, feeding or related behaviour

Scientific Name	Threatened Category	Presence Text
-----------------	---------------------	---------------

[Vanacampus phillipi](#)

Port Phillip Pipefish [66284]

Species or species
habitat may occur
likely to occur within
within area
area

Current Scientific Name	Status	Type of Presence
Balaenoptera edeni Bryde's Whale [35]		Species or species habitat may occur within area
Balaenoptera musculus Blue Whale [36]	Endangered	Species or species habitat likely to occur within area
Balaenoptera physalus Fin Whale [37]	Vulnerable	Foraging, feeding or related behaviour likely to occur within area
Berardius arnuxii Arnoux's Beaked Whale [70]		Species or species habitat may occur within area
Caperea marginata Pygmy Right Whale [39]		Foraging, feeding or related behaviour likely to occur within area
Delphinus delphis Common Dolphin, Short-beaked Common Dolphin [60]		Species or species habitat may occur within area
Eubalaena australis Southern Right Whale [40]	Endangered	Breeding known to occur within area
Feresa attenuata Pygmy Killer Whale [61]		Species or species habitat may occur within area
Globicephala macrorhynchus Short-finned Pilot Whale [62]		Species or species habitat may occur within area
Globicephala melas Long-finned Pilot Whale [59282]		Species or species habitat may occur within area
Grampus griseus Risso's Dolphin, Grampus [64]		Species or species habitat may occur within area

Current Scientific Name	Status	Type of Presence
Kogia breviceps Pygmy Sperm Whale [57]		Species or species habitat may occur within area
Kogia sima as Kogia simus Dwarf Sperm Whale [85043]		Species or species habitat may occur within area
Lagenorhynchus obscurus Dusky Dolphin [43]		Species or species habitat may occur within area
Lissodelphis peronii Southern Right Whale Dolphin [44]		Species or species habitat may occur within area
Megaptera novaeangliae Humpback Whale [38]		Foraging, feeding or related behaviour known to occur within area
Mesoplodon bowdoini Andrew's Beaked Whale [73]		Species or species habitat may occur within area
Mesoplodon densirostris Blainville's Beaked Whale, Dense-beaked Whale [74]		Species or species habitat may occur within area
Mesoplodon grayi Gray's Beaked Whale, Scamperdown Whale [75]		Species or species habitat may occur within area
Mesoplodon hectori Hector's Beaked Whale [76]		Species or species habitat may occur within area
Mesoplodon layardii Strap-toothed Beaked Whale, Strap-toothed Whale, Layard's Beaked Whale [25556]		Species or species habitat may occur within area
Mesoplodon mirus True's Beaked Whale [54]		Species or species habitat may occur within area

Current Scientific Name	Status	Type of Presence
Orcinus orca Killer Whale, Orca [46]		Species or species habitat may occur within area
Peponocephala electra Melon-headed Whale [47]		Species or species habitat may occur within area
Physeter macrocephalus Sperm Whale [59]		Species or species habitat may occur within area
Stenella attenuata Spotted Dolphin, Pantropical Spotted Dolphin [51]		Species or species habitat may occur within area
Stenella coeruleoalba Striped Dolphin, Euphrosyne Dolphin [52]		Species or species habitat may occur within area
Tursiops aduncus Indian Ocean Bottlenose Dolphin, Spotted Bottlenose Dolphin [68418]		Species or species habitat likely to occur within area
Tursiops truncatus s. str. Bottlenose Dolphin [68417]		Species or species habitat may occur within area
Ziphius cavirostris Cuvier's Beaked Whale, Goose-beaked Whale [56]		Species or species habitat may occur within area

Australian Marine Parks | [Resource Information](#) |

Park Name	Zone & IUCN Categories
Geographe	Habitat Protection Zone (IUCN IV)
Geographe	Multiple Use Zone (IUCN VI)
Geographe	National Park Zone (IUCN II)
South-west Corner	National Park Zone (IUCN II)
South-west Corner	National Park Zone (IUCN II)

Park Name	Zone & IUCN Categories
South-west Corner	Special Purpose Zone (IUCN VI)
Geographe	Special Purpose Zone (Mining Exclusion) (IUCN VI)
South-west Corner	Special Purpose Zone (Mining Exclusion) (IUCN VI)
South-west Corner	Special Purpose Zone (Mining Exclusion) (IUCN VI)

Extra Information

State and Territory Reserves		Resource Information
Protected Area Name	Reserve Type	State
Alco	Nature Reserve	WA
Arthur River	Nature Reserve	WA
Ballast Pit	Nature Reserve	WA
Beaufort Bridge	Nature Reserve	WA
Benger Swamp	Nature Reserve	WA
Birdwhistle	Nature Reserve	WA
Birdwood	Nature Reserve	WA
Blackbutt	Conservation Park	WA
Blackwood River	National Park	WA
Bockaring	Nature Reserve	WA
Bokan	Nature Reserve	WA
Bokarup	Nature Reserve	WA
Boolading	Nature Reserve	WA
Boorara-Gardner	National Park	WA
Boundain	Nature Reserve	WA
Boyndaminup	National Park	WA
Bramley	National Park	WA
Broadwater	Nature Reserve	WA

Protected Area Name	Reserve Type	State
Brockman	National Park	WA
Brooks	Nature Reserve	WA
Broomehill	Nature Reserve	WA
Buchanan	Nature Reserve	WA
Byrd Swamp	Nature Reserve	WA
Capel	Nature Reserve	WA
Capercup Road North	Nature Reserve	WA
Carmody	Nature Reserve	WA
Carrolup	Nature Reserve	WA
Casuarina	Nature Reserve	WA
Chatham Island	Nature Reserve	WA
Cherry Tree Pool	Nature Reserve	WA
Chester	Nature Reserve	WA
Claypit	Nature Reserve	WA
Cobertup	Nature Reserve	WA
Cobline	Nature Reserve	WA
Concaring	Nature Reserve	WA
Coomelberrup	Nature Reserve	WA
Cootayerup	Nature Reserve	WA
Corneecup	Nature Reserve	WA
Cowerup	Nature Reserve	WA
Coyrecup	Nature Reserve	WA
Cronin	Nature Reserve	WA
Culbin	Nature Reserve	WA
D'Entrecasteaux	National Park	WA
Dalgarup	National Park	WA
Dardanup	Conservation Park	WA

Protected Area Name	Reserve Type	State
Dead Mans Swamp	Nature Reserve	WA
Dingerlin	Nature Reserve	WA
Dongolocking	Nature Reserve	WA
Donnelly River	Nature Reserve	WA
Donnybrook Boyup Brook Road	Nature Reserve	WA
Dulbining	Nature Reserve	WA
Dumbleyung Lake	Nature Reserve	WA
Eastbrook	Nature Reserve	WA
East Collanilling	Nature Reserve	WA
Easter	National Park	WA
Faunadale	Nature Reserve	WA
Fish Road	Nature Reserve	WA
Flagstaff	Nature Reserve	WA
Flinders Bay	Nature Reserve	WA
Forest Grove	National Park	WA
Galamup	Nature Reserve	WA
Gingilup Swamps	Nature Reserve	WA
Gloucester	National Park	WA
Gnarkaryelling	Nature Reserve	WA
Greater Beedelup	National Park	WA
Greater Dordagup	National Park	WA
Greater Hawke	National Park	WA
Greater Kingston	National Park	WA
Greater Preston	National Park	WA
Greenbushes	Nature Reserve	WA
Gundaring Lake	Nature Reserve	WA
Haag	Nature Reserve	WA

Protected Area Name	Reserve Type	State
Haddleton	Nature Reserve	WA
Haddleton Springs	Nature Reserve	WA
Hamelin Island	Nature Reserve	WA
Harrismith	Nature Reserve	WA
Hester	Conservation Park	WA
Highbury	Nature Reserve	WA
Hilliger	National Park	WA
Hillman	Nature Reserve	WA
Hobart Road	Nature Reserve	WA
Hurdle Creek	Nature Reserve	WA
Ibis Lake	Nature Reserve	WA
Jaloran	Nature Reserve	WA
Jane	National Park	WA
Jingalup	Nature Reserve	WA
Johns Well	Nature Reserve	WA
Kerr	Conservation Park	WA
King Rock	Nature Reserve	WA
Kodjinup	Nature Reserve	WA
Kojonup	Conservation Reserve	WA
Korijekup	Conservation Park	WA
Kulikup	Nature Reserve	WA
Kulunilup	Nature Reserve	WA
Lake Muir	National Park	WA
Lake Muir	Nature Reserve	WA
Lane Poole Reserve	5(1)(g) Reserve	WA
Lavender	Nature Reserve	WA
Leeuwin-Naturaliste	National Park	WA

Protected Area Name	Reserve Type	State
Leschenault Peninsula	Conservation Park	WA
Locke	Nature Reserve	WA
Mallee Plain	Nature Reserve	WA
Manning Road	Nature Reserve	WA
Maragoonda	Nature Reserve	WA
Martinup	Nature Reserve	WA
McDougall	Nature Reserve	WA
Merilup	Nature Reserve	WA
Mettabinup	Nature Reserve	WA
Milyeannup	National Park	WA
Mininup	Nature Reserve	WA
Miripin	Nature Reserve	WA
Moojebing	Nature Reserve	WA
Moornaming	Nature Reserve	WA
Morangarel	Nature Reserve	WA
Mount Frankland	National Park	WA
Mount Frankland North	National Park	WA
Mount Frankland South	National Park	WA
Mount Pleasant	Nature Reserve	WA
Mount Roe	National Park	WA
Muja	Conservation Park	WA
Murapin	Nature Reserve	WA
Nallian	Nature Reserve	WA
Narlingup	Nature Reserve	WA
Ngari Capes	Marine Park	WA
Ngopitchup	Nature Reserve	WA
Nollajup	Nature Reserve	WA

Protected Area Name	Reserve Type	State
Noobijup	Nature Reserve	WA
North Wagin	Nature Reserve	WA
North Yilliminning	Nature Reserve	WA
NTWA Bushland covenant (0003)	Conservation Covenant	WA
NTWA Bushland covenant (0004)	Conservation Covenant	WA
NTWA Bushland covenant (0007A)	Conservation Covenant	WA
NTWA Bushland covenant (0007B)	Conservation Covenant	WA
NTWA Bushland covenant (0012)	Conservation Covenant	WA
NTWA Bushland covenant (0013)	Conservation Covenant	WA
NTWA Bushland covenant (0016)	Conservation Covenant	WA
NTWA Bushland covenant (0018)	Conservation Covenant	WA
NTWA Bushland covenant (0022)	Conservation Covenant	WA
NTWA Bushland covenant (0028)	Conservation Covenant	WA
NTWA Bushland covenant (0029)	Conservation Covenant	WA
NTWA Bushland covenant (0030)	Conservation Covenant	WA
NTWA Bushland covenant (0031)	Conservation Covenant	WA
NTWA Bushland covenant (0033)	Conservation Covenant	WA
NTWA Bushland covenant (0036)	Conservation Covenant	WA
NTWA Bushland covenant (0037)	Conservation Covenant	WA
NTWA Bushland covenant (0041)	Conservation Covenant	WA
NTWA Bushland covenant (0044A)	Conservation Covenant	WA
NTWA Bushland covenant (0044B)	Conservation Covenant	WA
NTWA Bushland covenant (0044C)	Conservation Covenant	WA
NTWA Bushland covenant (0049)	Conservation Covenant	WA
NTWA Bushland covenant (0063)	Conservation Covenant	WA
NTWA Bushland covenant (0065A)	Conservation Covenant	WA
NTWA Bushland covenant (0065B)	Conservation Covenant	WA

Protected Area Name	Reserve Type	State
NTWA Bushland covenant (0069)	Conservation Covenant	WA
NTWA Bushland covenant (0071)	Conservation Covenant	WA
NTWA Bushland covenant (0072A)	Conservation Covenant	WA
NTWA Bushland covenant (0072B)	Conservation Covenant	WA
NTWA Bushland covenant (0085A)	Conservation Covenant	WA
NTWA Bushland covenant (0085B)	Conservation Covenant	WA
NTWA Bushland covenant (0090)	Conservation Covenant	WA
NTWA Bushland covenant (0092)	Conservation Covenant	WA
NTWA Bushland covenant (0095)	Conservation Covenant	WA
NTWA Bushland covenant (0098)	Conservation Covenant	WA
NTWA Bushland covenant (0099)	Conservation Covenant	WA
NTWA Bushland covenant (0100)	Conservation Covenant	WA
NTWA Bushland covenant (0102)	Conservation Covenant	WA
NTWA Bushland covenant (0103)	Conservation Covenant	WA
NTWA Bushland covenant (0107)	Conservation Covenant	WA
NTWA Bushland covenant (0108)	Conservation Covenant	WA
NTWA Bushland covenant (0112)	Conservation Covenant	WA
NTWA Bushland covenant (0113)	Conservation Covenant	WA
NTWA Bushland covenant (0116A)	Conservation Covenant	WA
NTWA Bushland covenant (0116B)	Conservation Covenant	WA
NTWA Bushland covenant (0117)	Conservation Covenant	WA
NTWA Bushland covenant (0124)	Conservation Covenant	WA
NTWA Bushland covenant (0125)	Conservation Covenant	WA
NTWA Bushland covenant (0130)	Conservation Covenant	WA
NTWA Bushland covenant (0138)	Conservation Covenant	WA
NTWA Bushland covenant (0144)	Conservation Covenant	WA
NTWA Bushland covenant (0146)	Conservation Covenant	WA

Protected Area Name	Reserve Type	State
NTWA Bushland covenant (0147)	Conservation Covenant	WA
NTWA Bushland covenant (0148)	Conservation Covenant	WA
NTWA Bushland covenant (0149)	Conservation Covenant	WA
NTWA Bushland covenant (0150)	Conservation Covenant	WA
NTWA Bushland covenant (0152)	Conservation Covenant	WA
NTWA Bushland covenant (0155)	Conservation Covenant	WA
NTWA Bushland covenant (0164)	Conservation Covenant	WA
NTWA Bushland covenant (0168)	Conservation Covenant	WA
NTWA Bushland covenant (0173)	Conservation Covenant	WA
NTWA Bushland covenant (0175)	Conservation Covenant	WA
Ockley	Nature Reserve	WA
Pagett	Nature Reserve	WA
Parkeyerring	Nature Reserve	WA
Pindicup	Nature Reserve	WA
Pinticup	Nature Reserve	WA
Powlalup	Nature Reserve	WA
Quagering	Nature Reserve	WA
Quindinup	Nature Reserve	WA
Quongunnerunding	Nature Reserve	WA
Rapids	Conservation Park	WA
Red Hill	Nature Reserve	WA
Ruabon Townsite	Nature Reserve	WA
Sabina	Nature Reserve	WA
Sandalwood Block Timber Reserve	5(1)(g) Reserve	WA
Scott	National Park	WA
Seal Island (WA25645)	Nature Reserve	WA
Shannon	National Park	WA

Protected Area Name	Reserve Type	State
Sir James Mitchell	National Park	WA
Six Mile Road	Nature Reserve	WA
Smith Brook	Nature Reserve	WA
South Jingalup	Nature Reserve	WA
St Alouarn Island	Nature Reserve	WA
Stockdill Road	Nature Reserve	WA
Strathmore Hill	Nature Reserve	WA
Sugar Loaf Rock	Nature Reserve	WA
Sussex Location 2561	NRS Addition - Gazettal in Progress	WA
Taarblin Lake	Nature Reserve	WA
Tarin Rock	Nature Reserve	WA
Tone-Perup	Nature Reserve	WA
Toolibin	Nature Reserve	WA
Towerrining	Nature Reserve	WA
Trigwell	Nature Reserve	WA
Tuart Forest	National Park	WA
Unicup	Nature Reserve	WA
Unnamed WA01333	Conservation Park	WA
Unnamed WA01703	5(1)(h) Reserve	WA
Unnamed WA02087	Nature Reserve	WA
Unnamed WA02184	Nature Reserve	WA
Unnamed WA03249	Nature Reserve	WA
Unnamed WA03412	5(1)(g) Reserve	WA
Unnamed WA05339	Nature Reserve	WA
Unnamed WA05796	Nature Reserve	WA
Unnamed WA08910	5(1)(h) Reserve	WA

Protected Area Name	Reserve Type	State
Unnamed WA09847	Nature Reserve	WA
Unnamed WA10335	5(1)(h) Reserve	WA
Unnamed WA10731	Nature Reserve	WA
Unnamed WA10793	Nature Reserve	WA
Unnamed WA10930	Nature Reserve	WA
Unnamed WA11962	5(1)(h) Reserve	WA
Unnamed WA11993	5(1)(g) Reserve	WA
Unnamed WA12645	Nature Reserve	WA
Unnamed WA12952	5(1)(h) Reserve	WA
Unnamed WA13102	Nature Reserve	WA
Unnamed WA13438	Nature Reserve	WA
Unnamed WA14459	Nature Reserve	WA
Unnamed WA14567	Nature Reserve	WA
Unnamed WA15061	Nature Reserve	WA
Unnamed WA15185	Nature Reserve	WA
Unnamed WA15787	Nature Reserve	WA
Unnamed WA15788	Nature Reserve	WA
Unnamed WA15855	Nature Reserve	WA
Unnamed WA16787	Nature Reserve	WA
Unnamed WA16901	Nature Reserve	WA
Unnamed WA17519	National Park	WA
Unnamed WA19068	Nature Reserve	WA
Unnamed WA19075	Nature Reserve	WA
Unnamed WA19080	Nature Reserve	WA
Unnamed WA19081	Nature Reserve	WA
Unnamed WA19085	Nature Reserve	WA
Unnamed WA19086	Nature Reserve	WA

Protected Area Name	Reserve Type	State
Unnamed WA19119	Nature Reserve	WA
Unnamed WA19161	Nature Reserve	WA
Unnamed WA19412	Nature Reserve	WA
Unnamed WA20435	5(1)(g) Reserve	WA
Unnamed WA20479	Nature Reserve	WA
Unnamed WA20751	5(1)(g) Reserve	WA
Unnamed WA20985	Nature Reserve	WA
Unnamed WA20987	5(1)(g) Reserve	WA
Unnamed WA21064	Nature Reserve	WA
Unnamed WA22247	Nature Reserve	WA
Unnamed WA22482	5(1)(h) Reserve	WA
Unnamed WA24057	Nature Reserve	WA
Unnamed WA24282	Nature Reserve	WA
Unnamed WA24647	5(1)(h) Reserve	WA
Unnamed WA24707	Nature Reserve	WA
Unnamed WA24770	Nature Reserve	WA
Unnamed WA24827	Nature Reserve	WA
Unnamed WA25274	5(1)(h) Reserve	WA
Unnamed WA25696	Nature Reserve	WA
Unnamed WA25697	Nature Reserve	WA
Unnamed WA25836	Nature Reserve	WA
Unnamed WA26005	Nature Reserve	WA
Unnamed WA26065	Nature Reserve	WA
Unnamed WA26158	Nature Reserve	WA
Unnamed WA26238	Nature Reserve	WA
Unnamed WA26620	Nature Reserve	WA
Unnamed WA27481	Nature Reserve	WA

Protected Area Name	Reserve Type	State
Unnamed WA28549	Nature Reserve	WA
Unnamed WA29589	Nature Reserve	WA
Unnamed WA29777	Nature Reserve	WA
Unnamed WA29906	Nature Reserve	WA
Unnamed WA30394	Nature Reserve	WA
Unnamed WA31621	Nature Reserve	WA
Unnamed WA32663	Nature Reserve	WA
Unnamed WA35163	Nature Reserve	WA
Unnamed WA37237	5(1)(g) Reserve	WA
Unnamed WA38731	Nature Reserve	WA
Unnamed WA39199	5(1)(h) Reserve	WA
Unnamed WA39399	Nature Reserve	WA
Unnamed WA40035	Nature Reserve	WA
Unnamed WA40552	5(1)(h) Reserve	WA
Unnamed WA40564	Nature Reserve	WA
Unnamed WA40910	Nature Reserve	WA
Unnamed WA41568	Nature Reserve	WA
Unnamed WA41597	Nature Reserve	WA
Unnamed WA41826	5(1)(g) Reserve	WA
Unnamed WA42377	Nature Reserve	WA
Unnamed WA42879	Nature Reserve	WA
Unnamed WA42942	Nature Reserve	WA
Unnamed WA43031	Nature Reserve	WA
Unnamed WA43056	Nature Reserve	WA
Unnamed WA43282	Nature Reserve	WA
Unnamed WA43286	Nature Reserve	WA
Unnamed WA43464	Nature Reserve	WA

Protected Area Name	Reserve Type	State
Unnamed WA44676	5(1)(h) Reserve	WA
Unnamed WA44705	5(1)(g) Reserve	WA
Unnamed WA44709	5(1)(h) Reserve	WA
Unnamed WA44838	Nature Reserve	WA
Unnamed WA45533	Nature Reserve	WA
Unnamed WA46006	Nature Reserve	WA
Unnamed WA46070	Nature Reserve	WA
Unnamed WA46108	Nature Reserve	WA
Unnamed WA46128	Nature Reserve	WA
Unnamed WA46260	Nature Reserve	WA
Unnamed WA46400	National Park	WA
Unnamed WA46407	5(1)(h) Reserve	WA
Unnamed WA46595	Nature Reserve	WA
Unnamed WA47557	5(1)(h) Reserve	WA
Unnamed WA47558	Nature Reserve	WA
Unnamed WA47688	National Park	WA
Unnamed WA48837	Nature Reserve	WA
Unnamed WA49385	Nature Reserve	WA
Unnamed WA49706	Nature Reserve	WA
Unnamed WA49857	Nature Reserve	WA
Unnamed WA50017	Nature Reserve	WA
Unnamed WA50190	Nature Reserve	WA
Unnamed WA50270	5(1)(h) Reserve	WA
Unnamed WA51982	5(1)(h) Reserve	WA
Unnamed WA52018	5(1)(h) Reserve	WA
Unnamed WA53269	Conservation Park	WA
Vagg	Nature Reserve	WA

Protected Area Name	Reserve Type	State
Wagin Lake	Nature Reserve	WA
Wahkinup	Nature Reserve	WA
Walburra	Nature Reserve	WA
Walbyring	Nature Reserve	WA
Walpole And Nornalup Inlets	Marine Park	WA
Walpole-Nornalup	National Park	WA
Wandoora	Nature Reserve	WA
Wangeling Gully	Nature Reserve	WA
Wardering Lake	Nature Reserve	WA
Warren	National Park	WA
Wellington	National Park	WA
Wellington Discovery Forest	5(1)(h) Reserve	WA
Westralia	Conservation Park	WA
Whicher	National Park	WA
Whin Bin Rock	Nature Reserve	WA
Whistler	Nature Reserve	WA
Wild Horse Swamp	Nature Reserve	WA
Wilga	Nature Reserve	WA
Wilgarrup	Nature Reserve	WA
Williams 15411 & 15065	NRS Addition - Gazettal in Progress	WA
Wiltshire-Butler	National Park	WA
Wingedine	Nature Reserve	WA
Woodanilling	Nature Reserve	WA
Woorgabup	Nature Reserve	WA
Wyvern Road	Nature Reserve	WA
Yackrikine	Nature Reserve	WA

Protected Area Name	Reserve Type	State
Yalgorup	National Park	WA
Yallatup	Nature Reserve	WA
Yarling	Nature Reserve	WA
Yarnup	Nature Reserve	WA
Yelverton	National Park	WA
Yilliminning	Nature Reserve	WA

Regional Forest Agreements [\[Resource Information \]](#)

Note that all areas with completed RFAs have been included.

RFA Name	State
South West WA RFA	Western Australia

Nationally Important Wetlands [\[Resource Information \]](#)

Wetland Name	State
Benger Swamp	WA
Blackwood River (Lower Reaches) and Tributaries System	WA
Broke Inlet System	WA
Byenup Lagoon System	WA
Cape Leeuwin System	WA
Coyrecup Lake	WA
Doggerup Creek System	WA
Dumbleyung Lake	WA
Gingilup-Jasper Wetland System	WA
Lake Muir	WA
Maringup Lake	WA
McCarleys Swamp (Ludlow Swamp)	WA
Toolibin Lake	WA
Vasse-Wonnerup Wetland System	WA
Yalgorup Lakes System	WA

EPBC Act Referrals [\[Resource Information \]](#)

Title of referral	Reference	Referral Outcome	Assessment Status
-------------------	-----------	------------------	-------------------

Title of referral	Reference	Referral Outcome	Assessment Status
Controlled action			
Controlled action			
313-316 Mimminup Road, Dalyellup	2012/6274	Controlled Action	Post-Approval
Aerial Application of Lavicide to Vasse-Wonnerup Wetlands	2010/5593	Controlled Action	Post-Approval
Albemarle Lithium hydroxide manufacturing plant, Kemerton, WA	2017/8099	Controlled Action	Post-Approval
All weather access track road between Windy Harbour and Nelson Location 7965	2011/6121	Controlled Action	Post-Approval
Banksia Road Class III Putrescible Landfill, Crooked Brook, WA	2016/7672	Controlled Action	Assessment Approach
Binningup Beach Residential Development, Lots 195, 304, 9003 Lakes Parade, Binningup WA	2009/5046	Controlled Action	Post-Approval
Bluewaters Power Station Expansion Phases 3 & 4	2008/4113	Controlled Action	Proposed Decision
Bowelling curves realignment - Collie Lake King Road 64.76 - 69.84 SLK, WA	2016/7757	Controlled Action	Post-Approval
Brunswick Dam and Pipeline Infrastructure Project	2009/5186	Controlled Action	Completed
Bunbury Outer Ring Road Northern and Central Section Project, WA	2019/8471	Controlled Action	Post-Approval
Bunbury Outer Ring Road Southern Section	2012/6652	Controlled Action	Completed
Bunbury Outer Ring Road Southern Section project, WA	2019/8543	Controlled Action	Final PD
Bunbury Port Berth 14A Expansion & Coal Storage & Loading Facility, WA	2014/7200	Controlled Action	Post-Approval
Bussell Highway - Capel to Hutton Section, WA			

2015/7626	Controlled Action		Post-Approval
Bussell Highway Duplication Hutton to Sabina	2020/8800	Controlled Action	Post-Approval
Busselton Foreshore Redevelopment from West Street to Ford Road	2013/6830	Controlled Action	Post-Approval
Capecare, urban and commercial new development, Aged Care -	2006/2834	Controlled Action	Post-Approval

Title of referral	Reference	Referral Outcome	Assessment Status
Controlled action			
Naturaliste Terrace, Dunsborough, WA			
Cape View Resort at Lot 190 Little Colin Street	2006/3070	Controlled Action	Post-Approval
CBH Broomehill Fixed Rail Outloading Facility	2021/9038	Controlled Action	Referral Decision
Clear 2.86 ha of native vegetation for the purpose of horticulture	2010/5655	Controlled Action	Post-Approval
Clearing for Bunbury Airport Expansion, WA	2013/6872	Controlled Action	Post-Approval
Clearing of vegetation to expand the waste rock dump at Greenbushes, WA	2013/6904	Controlled Action	Post-Approval
Coal Mine Expansion	2001/376	Controlled Action	Post-Approval
Collie Motorplex Dragstrip, WA	2015/7455	Controlled Action	Completed
Construction of new sporting field	2007/3333	Controlled Action	Post-Approval
Dalyellup Beach Estate - Residential Development	2007/3361	Controlled Action	Post-Approval
Dardanup Mine Expansion Southern Extension	2011/6087	Controlled Action	Post-Approval
Dawson Beach Estate Stage 2	2005/2153	Controlled Action	Post-Approval
Development Guide Plan for 46 ha Residential Subdivision	2008/4102	Controlled Action	Post-Approval
Development of Busselton Health Campus	2011/6011	Controlled Action	Post-Approval
Development of Lot 9018 Martingale Road and Lot 377 Clinker Drive, Dunsborough, WA	2018/8278	Controlled Action	Further Information Request
Develop Trails and a Wetlands	Demonstration Site and Centre		

Title of referral	Reference	Referral Outcome	Assessment Status
Controlled action			
2008/4439	Controlled	Action	Post-Approval
Eastern Link Project, Busselton WA	2018/8155	Controlled Action	Post-Approval
Extension of coal mine, abutting Muja Mine, Collie, WA	2009/5014	Controlled Action	Assessment Approach

Title of referral	Reference	Referral Outcome	Assessment Status
Controlled action			
Flat Rock boating facility	2008/4506	Controlled Action	Post-Approval
Greenbushes Lithium mine expansion, 80 km SE of Bunbury, WA	2018/8206	Controlled Action	Post-Approval
Greenbushes to Kirup Link, WA	2017/8059	Controlled Action	Post-Approval
Hard Rock Quarry, Shenton Ridge, Wellington, WA	2017/8085	Controlled Action	Post-Approval
Kemerton SIA Road and Drainage project, near Australind, WA	2018/8237	Controlled Action	Post-Approval
Koppers Wood Products Wood Processing Facility	2012/6691	Controlled Action	Post-Approval
Leeuwin Offshore Wind Farm	2022/9160	Controlled Action	Assessment Approach
Lennox Weir Removal, 12kms west Busselton	2021/8915	Controlled Action	Assessment Approach
Lot 20 and 42 Marriot Road Commercial Development	2021/8883	Controlled Action	Post-Approval
Lot 32 Tom Cullity Drive, Wilyabrup	2020/8866	Controlled Action	Post-Approval
Lot 4 Runnymede Road, Wellesley - Proposed Sand Extraction	2020/8862	Controlled Action	Assessment Approach
Lower Vasse River Sediment Removal	2021/9051	Controlled Action	Post-Approval
Millstream Dam Expansion	2010/5614	Controlled Action	Post-Approval
Milyeannup Wind Farm	2009/4911	Controlled Action	Post-Approval
Mining of titaninum mineral sands from four deposits located on both private la	2004/1628	Controlled Action	Completed
Mining of titanium mineral sands in Happy Valley north and south, on	private ...		

Title of referral	Reference	Referral Outcome	Assessment Status
-------------------	-----------	------------------	-------------------

Controlled action

2006/2597 Controlled Action

Completed

[Muja Power Station FAD Raising Project, near Collie, WA](#)

2019/8495

Controlled Action

Assessment Approach

[Old Broadwater Farm Estate Subdivision - Stage 3](#)

2009/5231

Controlled Action

Post-Approval

Title of referral	Reference	Referral Outcome	Assessment Status
<u>Controlled action</u>			
<u>Peppermint Park Residential Subdivision - Stage 5</u>	2008/4028	Controlled Action	Post-Approval
<u>Preston Industrial Park</u>	2012/6312	Controlled Action	Completed
<u>Proposed land clearing for Shotts Industrial Park</u>	2009/5086	Controlled Action	Post-Approval
<u>Proposed Sand Extraction at Lot 601 Stanley Road, Wellesley, WA</u>	2020/8635	Controlled Action	Further Information Request
<u>Remove 1.87ha of degraded parkland cleared vegetation to utilising the area for</u>	2010/5661	Controlled Action	Post-Approval
<u>Residential/Industrial subdivision, Lot 18, Vasse Highway, Shire of Busselton</u>	2006/3208	Controlled Action	Post-Approval
<u>Residential Development</u>	2007/3463	Controlled Action	Post-Approval
<u>Residential development, College Grove, WA</u>	2015/7579	Controlled Action	Completed
<u>Residential Development, Lot 3 & 4 Dorsett Street</u>	2006/2774	Controlled Action	Completed
<u>Residential Development, Lot 522 Ditchingham Place Australind, WA</u>	2019/8432	Controlled Action	Assessment Approach
<u>Residential development Lot 3, 500 Bussell Highway, WA</u>	2013/7098	Controlled Action	Post-Approval
<u>Residential development Lot 71 Spurr St, Capel, WA</u>	2019/8441	Controlled Action	Assessment Approach
<u>Residential development Lots 8 & 9 King Street</u>	2006/2787	Controlled Action	Completed
<u>Residential subdivision, Lot 501 Vasse Hwy, Yalyalup, WA</u>	2018/8244	Controlled Action	Post-Approval
<u>retirement units & aged care facility development</u>	2007/3533	Controlled Action	Post-Approval

Title of referral	Reference	Referral Outcome	Assessment Status
-------------------	-----------	------------------	-------------------

Controlled action

<u>Road Widening Kojonup South SLK 254.9 to SLK 259.8</u>	2017/7934	Controlled Action	Post-Approval
---	-----------	-------------------	---------------

<u>Sand and limestone extraction</u>	2003/1284	Controlled Action	Completed
--	-----------	-------------------	-----------

<u>Sand and Limestone Extraction on Lots 313 and 314, Harewoods Road</u>	2005/2291	Controlled Action	Completed
--	-----------	-------------------	-----------

Title of referral	Reference	Referral Outcome	Assessment Status
Controlled action			
Sand Extraction Project, Lot 1 Southwest Highway, Boyanup, WA	2015/7449	Controlled Action	Assessment Approach
Sand Extraction Project Lot 5 Wellesley Road, Wellesley Shire of Harvey	2021/9034	Controlled Action	Assessment Approach
Sand mine	2008/4114	Controlled Action	Completed
Sand Mine, Lot 122 Old Coast Road, Parkfield, Binningup, WA	2014/7164	Controlled Action	Post-Approval
Sand Mining on Lot 7 Runnymede Road	2011/5996	Controlled Action	Post-Approval
Shark Hazard Mitigation Drum Line Program, WA	2014/7174	Controlled Action	Completed
Silica Sand Mine Expansion	2002/910	Controlled Action	Post-Approval
Smiths Beach Project, Yallingup - Coastal Tourism Village	2021/9141	Controlled Action	Referral Publication
Somerville Drive Extension	2011/6153	Controlled Action	Post-Approval
South Capel Remediation Project, WA	2018/8250	Controlled Action	Post-Approval
Southern Forests Irrigation Scheme	2019/8509	Controlled Action	Assessment Approach
Southern Seawater Desalination Project	2008/4173	Controlled Action	Post-Approval
Stage 2 Buckingham Way- Collie Residential Development	2011/6049	Controlled Action	Post-Approval
Stage 2 of the Bunbury Port Access Project	2010/5768	Controlled Action	Post-Approval
Three Turning Pockets West of Busselton Townsite	2002/846	Controlled Action	Post-Approval
Titanium Minerals Deposit	2001/279	Controlled Action	Post-Approval

Title of referral	Reference	Referral Outcome	Assessment Status
<u>Controlled action</u>			
<u>Tourism Villa Facility Development</u>	2008/4025	Controlled Action	Post-Approval
<u>tourist and residential development</u>	2007/3483	Controlled Action	Post-Approval
<u>Transmission Line Project</u>	2011/6066	Controlled Action	Post-Approval

Title of referral	Reference	Referral Outcome	Assessment Status
Controlled action			
Tutunup mineral sands mine	2008/4409	Controlled Action	Completed
Tutunup South Mineral Sands Project	2007/3441	Controlled Action	Post-Approval
Undertake gravel extraction on Lot 20 Coalfields Road, Roelands	2013/6765	Controlled Action	Post-Approval
Upgrade of Ford Road	2005/2113	Controlled Action	Completed
Urban development, multiple lots Northerly Street, Vasse, WA	2019/8494	Controlled Action	Assessment Approach
Urban development subdivision	2013/6955	Controlled Action	Post-Approval
Vasse Diversion Drain Upgrade	2017/7932	Controlled Action	Post-Approval
Vlam Road Gravel Pit, Vlam Road, Karridale, WA	2014/7141	Controlled Action	Post-Approval
VV Walsh Cold Stores Expansion	2021/8902	Controlled Action	Proposed Decision
WA Offshore Windfarm	2021/8961	Controlled Action	Assessment Approach
Waste management project and quarry, Banksia Road, Dardanup, WA	2018/8270	Controlled Action	Proposed Decision
Waterloo Heavy Mineral Mining Project, Henty, WA	2013/6879	Controlled Action	Post-Approval
Widening maintenance zones for 3 roads, Wheatbelt region, WA	2016/7698	Controlled Action	Post-Approval
Wonnerup North Mineral Sands Project, Busselton, WA	2014/7205	Controlled Action	Post-Approval
Wonnerup South Mineral Sands Project, Yalyalup, WA	2014/7135	Controlled Action	Post-Approval
Wonnerup Titanium Mineral Mining Project	2010/5403	Controlled Action	Post-Approval

Title of referral	Reference	Referral Outcome	Assessment Status
<u>Controlled action</u>			
<u>Worsley Mine Expansion, WA</u>	2019/8437	Controlled Action	Assessment Approach
<u>Yalyalup Mineral Sands Project, WA</u>	2017/8094	Controlled Action	Post-Approval
<u>Yarragadee Water Supply Development</u>	2005/2073	Controlled Action	Completed

Title of referral	Reference	Referral Outcome	Assessment Status
Controlled action			
Yoganup 215 mineral sands mine - Mining Lease 70/401	2007/3225	Controlled Action	Completed
Yoongarillup Mineral Sands Project, WA	2012/6521	Controlled Action	Post-Approval
Not controlled action			
25 Lot Residential Subdivision	2009/4830	Not Controlled Action	Completed
300MW Coal-fired Power Station Expansion	2005/2233	Not Controlled Action	Completed
Aerial application of mosquito larvicides to Vasse Wonnerup Wetlands, WA	2016/7780	Not Controlled Action	Completed
Albany Highway Upgrade (242.56 - 248.4 SLK, WA	2013/6842	Not Controlled Action	Completed
Albany Highway Upgrade (248.4 - 250.8 SLK) WA	2013/6766	Not Controlled Action	Completed
Albemarle Lateral Gas Pipeline, Kemerton, WA	2019/8387	Not Controlled Action	Completed
Arthur River Road upgrade, WA	2016/7743	Not Controlled Action	Completed
Benger Solar Farm Connection Project - WA	2020/8763	Not Controlled Action	Completed
Bunbury Water Resources Recovery Scheme-Recycled Water Treatment Plant	2021/8986	Not Controlled Action	Completed
Bussell Highway (Bramley Section) SLK Upgrade	2012/6511	Not Controlled Action	Completed
Busselton-Margaret River Regional Airport Development Project, WA	2016/7675	Not Controlled Action	Completed
Busselton to Flinders Bay Rails to Trails Project, WA	2013/6835	Not Controlled Action	Completed
Busselton to Margaret River Transmission Line	2008/3964	Not Controlled Action	Completed
Cape Naturaliste Road Shared Pathway, Dunsborough, WA	2018/8282	Not Controlled Action	Completed
Causeway Bridge Duplication, Busselton, WA	2018/8309	Not Controlled Action	Completed
Caves Road and Cape Naturaliste Road Intersection Upgrade	2012/6395	Not Controlled Action	Completed

Title of referral	Reference	Referral Outcome	Assessment Status
Not controlled action			
Caves Road widening project between Dunsborough and Yallingup(20.3 -24.6 SLK), WA	2015/7475	Not Controlled Action	Completed
Clearing 5.4ha of native vegetation for sand extraction	2012/6592	Not Controlled Action	Completed
Clearing of vegetation to upgrade and widen the western end of Howie Road	2013/6859	Not Controlled Action	Completed
Collie Solar Farm, WA	2018/8160	Not Controlled Action	Completed
Construction and operation of Bluewaters II power station	2004/1632	Not Controlled Action	Completed
Construction of Additional Grain Storage and Associated Infrastructure at an Exi	2008/4477	Not Controlled Action	Completed
Construction of a water soak dam for fire suppression Lot 304 Rest Point Road, Walpole, WA	2014/7409	Not Controlled Action	Completed
Construction of Bluewaters Power Station	2003/1289	Not Controlled Action	Completed
Construction of the Margaret River bypass road	2012/6677	Not Controlled Action	Completed
CTBT - Cape Leeuwin Hydroacoustic Station Proposal	2000/27	Not Controlled Action	Completed
CTBT Infrasound Monitoring Station	2002/613	Not Controlled Action	Completed
Dardanup Residue Disposal Facility, WA	2015/7448	Not Controlled Action	Completed
Darkan Refuse Site Restructure, west of Darkan, WA	2013/6883	Not Controlled Action	Completed
Discharge of Water From Reverse Osmosis Treatment	2003/1154	Not Controlled Action	Completed

Title of referral	Reference	Referral Outcome	Assessment Status
Not controlled action			
<u>Extension of Brittain Road to connect with the South Western Hwy/Robertson Drive intersection</u>	2007/3707	Not Controlled Action	Completed
<u>Extension of commercial sand extraction operation, Shire of Capel WA</u>	2003/1250	Not Controlled Action	Completed
<u>Extension of Existing Sand Mining Operations Yoganup West Mining Leases ML70/672</u>	2003/1119	Not Controlled Action	Completed

Title of referral	Reference	Referral Outcome	Assessment Status
Not controlled action			
Flat Rocks Wind Farm	2022/9154	Not Controlled Action	Completed
Geo-science Investigations	2005/2069	Not Controlled Action	Completed
Gloucester Park Precinct-expansion of ovals and community facilities, Margaret River, WA	2017/7985	Not Controlled Action	Completed
Gravel extraction on Lot 305 Gravel Pit Road Henty, WA	2013/6750	Not Controlled Action	Completed
Horizontal drilling from Lot 35 Ballarat Rd under Wonnerup Inlet	2004/1354	Not Controlled Action	Completed
Improving rabbit biocontrol: releasing another strain of RHDV, sthrn two thirds of Australia	2015/7522	Not Controlled Action	Completed
INDIGO Central Submarine Telecommunications Cable	2017/8127	Not Controlled Action	Completed
Industrial development, Lot 561 Paris Road, Australind, WA	2016/7712	Not Controlled Action	Completed
Installation of stock proof fencing and a stock crossing 8 km from Karridale WA	2012/6427	Not Controlled Action	Completed
Jalbarragup Telecommunications Tower, WA	2017/8026	Not Controlled Action	Completed
Kemerton Lateral Gas Pipeline Project	2005/2388	Not Controlled Action	Completed
Kemerton Renewable Energy Node Switchyard KEREN Switchyard	2021/9072	Not Controlled Action	Completed
Iarvaciding of potential mosquito breeding wetlands	2006/2601	Not Controlled Action	Completed
Limestone quarry expansion	2005/2268	Not Controlled Action	Completed

Title of referral	Reference	Referral Outcome	Assessment Status
Not controlled action			
<u>Limestone Quarry Expansion, Lots 3618 and 1794, Finn Road</u>	2005/2332	Not Controlled Action	Completed
<u>Limestone quarry mining</u>	2006/2942	Not Controlled Action	Completed
<u>Lot 200 Caves Road Tourist Accommodation</u>	2020/8775	Not Controlled Action	Completed
<u>Millstream to Greenbushes Link Mains</u>	2012/6632	Not Controlled Action	Completed

Title of referral	Reference	Referral Outcome	Assessment Status
Not controlled action			
<u>Narrogin Link Road Stage 3 - North Extension, WA</u>	2016/7664	Not Controlled Action	Completed
<u>New automotive centre at the Southwest Institute of Technology, Bunbury, WA</u>	2010/5766	Not Controlled Action	Completed
<u>Northam Cranbrook Road widening, Katanning, WA</u>	2018/8238	Not Controlled Action	Completed
<u>Nuttman Road, Busselton Gravel Extraction, WA</u>	2017/8086	Not Controlled Action	Completed
<u>Premier Coal Mine Pit 3 North Extension, Collie, WA</u>	2015/7493	Not Controlled Action	Completed
<u>Proposal to widen Harris Road within the Shire of Dardanup, WA</u>	2013/6934	Not Controlled Action	Completed
<u>Proposed 15,000 bird barn-laid egg farm, Balingup, WA</u>	2013/6785	Not Controlled Action	Completed
<u>Proposed Expansion of Existing Gracetown Townsite & Upgrade of Existing Associa</u>	2010/5358	Not Controlled Action	Completed
<u>Proposed Fuel Reduction Burn, Loughton Park, Bunbury, WA</u>	2014/7148	Not Controlled Action	Completed
<u>Realignment and upgrade of Coalfields Hwy between 15.90-26.34 SLK, Western Australia</u>	2013/6902	Not Controlled Action	Completed
<u>Redevelopment of Lots 3 & 4, Kent Street</u>	2007/3243	Not Controlled Action	Completed
<u>Reinstating of Firebreaks at McLeod Creek, South West WA</u>	2012/6402	Not Controlled Action	Completed
<u>Replacement Floodgates</u>	2003/1010	Not Controlled Action	Completed
<u>Residential & Light Industrial Development, Vasse WA</u>	2013/6932	Not Controlled Action	Completed

Title of referral	Reference	Referral Outcome	Assessment Status
Not controlled action			
<u>Residential development, Lot 42, Farmhouse Court, Bovell, WA</u>	2014/7195	Not Controlled Action	Completed
<u>Residential development, Lot 54 Vittoria Road, Glen Iris, WA</u>	2018/8308	Not Controlled Action	Completed
<u>Residential development, Lots 120-121 Minninup Road, Dalyellup WA</u>	2018/8254	Not Controlled Action	Completed
<u>Residential Development - Assorted Lots Parade Rd, Washington Av & Bussell Hwy,</u>	2013/6935	Not Controlled Action	Completed

Title of referral	Reference	Referral Outcome	Assessment Status
Not controlled action			
<u>Usher WA</u>			
<u>Residential Development Riverslea Estate Stage 8, Margaret River, WA</u>	2014/7227	Not Controlled Action	Completed
<u>Residential-Rural Subdivision, Lot 1 Kudardup Rd, Kudardup, WA</u>	2012/6471	Not Controlled Action	Completed
<u>Residential Subdivision Lot 9000 Livingstone Heights</u>	2011/6168	Not Controlled Action	Completed
<u>Residential Subdivision on Lot 5 Garvey Road, Crooked Brook</u>	2012/6690	Not Controlled Action	Completed
<u>Rezoning of Lot 31, 80-lot Residential Subdivision</u>	2008/4680	Not Controlled Action	Completed
<u>Road alignment construction</u>	2001/456	Not Controlled Action	Completed
<u>Road realignment and safety improvements, Collie Lake King Road, Shire of West Arthur, WA</u>	2015/7422	Not Controlled Action	Completed
<u>Sand Extraction, Lot 265 Ducane Road, Gelorup, WA</u>	2012/6616	Not Controlled Action	Completed
<u>Secondary School Campus Development at Lot 150 Leisure Drive, Australind</u>	2013/6744	Not Controlled Action	Completed
<u>South Western Highway Reconstruction between Waterloo and Hynes Roads, Waterloo</u>	2010/5617	Not Controlled Action	Completed
<u>South Western Highway - Wokalup to Brunswick Junction - Upgrade</u>	2001/325	Not Controlled Action	Completed
<u>South Western Hwy upgrade (Padbury Hill Stage 2), east of Balingup, WA</u>	2016/7811	Not Controlled Action	Completed
<u>Stanley Road waste management facility, Wellesley, WA</u>	2014/7131	Not Controlled Action	Completed

Title of referral	Reference	Referral Outcome	Assessment Status
Not controlled action			
Tea Tree Planting, Walpole region, WA	2019/8397	Not Controlled Action	Completed
Titanium Mining	2001/340	Not Controlled Action	Completed
Twin Rivers Residential Subdivision	2005/2168	Not Controlled Action	Completed
Upgrade section of Albany Highway, Harold Road Passing Lane, WA	2016/7762	Not Controlled Action	Completed

Title of referral	Reference	Referral Outcome	Assessment Status
Not controlled action			
Vasse Hotel and Supermarket Redevelopment	2001/288	Not Controlled Action	Completed
Vegetation Clearance for Horticulture Operation Expansion, Lot 2, Springfield Rd, Parkfield, WA	2014/7196	Not Controlled Action	Completed
Vegetation clearing for industrial development	2013/6960	Not Controlled Action	Completed
Vegetation clearing for sand extraction, Lot 268 Leeuwin Road, Augusta	2013/6860	Not Controlled Action	Completed
Water Corporation, Storage and Pipeline, Collie, WA	2021/8936	Not Controlled Action	Completed
West's gravel pit development, Cowaramup, WA	2015/7586	Not Controlled Action	Completed
Western Extension to the Dardanup Mineral Sands Project	2008/4673	Not Controlled Action	Completed
Woodcrest Rise Estate Residential Development	2007/3794	Not Controlled Action	Completed
Not controlled action (particular manner)			
Aerial Application of Larvicide	2010/5490	Not Controlled Action (Particular Manner)	Post-Approval
Aerial Mosquito Spraying Vasse-Wonnerup System	2005/1952	Not Controlled Action (Particular Manner)	Post-Approval
Ambergate North Residential Development	2009/4802	Not Controlled Action (Particular Manner)	Post-Approval
Australian Underwater Discovery Centre	2021/9019	Not Controlled Action (Particular Manner)	Post-Approval

Title of referral	Reference	Referral Outcome	Assessment Status
Not controlled action			

[Australind Piggery expansion](#)

2014/7117

Not Controlled
Action (Particular
Manner)

Post-Approval

[Clearing of understorey vegetation for fire management purposes](#)

2010/5788

Not Controlled
Action (Particular
Manner)

Post-Approval

Title of referral	Reference	Referral Outcome	Assessment Status
Not controlled action (particular manner)			
<u>Construct and operate a 132kV transmission line and upgrade Kemerton Terminal Si</u>	2008/4484	Not Controlled Action (Particular Manner)	Post-Approval
<u>Construction of new bridge (Bridge 5370) across the Collie River, Eaton, WA</u>	2016/7657	Not Controlled Action (Particular Manner)	Post-Approval
<u>Construction of urea production plant and supporting infrastructure</u>	2009/5067	Not Controlled Action (Particular Manner)	Post-Approval
<u>Country Road Estate - Final Stage Development</u>	2006/3095	Not Controlled Action (Particular Manner)	Post-Approval
<u>Dalyellup Beach Estate Stages 12 and 14, near Bunbury</u>	2004/1726	Not Controlled Action (Particular Manner)	Post-Approval
<u>Dalyellup Beach Estate - Stages 13 and 16</u>	2006/3075	Not Controlled Action (Particular Manner)	Post-Approval
<u>Donnybrook Kojonup Road (M013) widening and associated works, WA</u>	2015/7605	Not Controlled Action (Particular Manner)	Post-Approval
<u>Extension of existing mains water supply pipeline</u>	2009/4686	Not Controlled Action (Particular Manner)	Post-Approval
<u>Grand Southern Margin 2D Marine Seismic Survey</u>	2008/4599	Not Controlled Action (Particular Manner)	Post-Approval
<u>INDIGO Marine Cable Route Survey (INDIGO)</u>	2017/7996	Not Controlled Action (Particular Manner)	Post-Approval

Title of referral	Reference	Referral Outcome	Assessment Status
Not controlled action (particular manner)			

[Katanning Infill Drill Program](#)

2021/8882

Not Controlled
Action (Particular
Manner)

Post-Approval

[Limestone Extraction on Lot 5 Old
Coast Road, Myalup, WA](#)

2012/6468

Not Controlled
Action (Particular

Post-Approval

Title of referral	Reference	Referral Outcome	Assessment Status
Not controlled action (particular manner)			
		Manner)	
<u>Locations 2629, 2699 & 2991 - Jamisons Road</u>	2002/771	Not Controlled Action (Particular Manner)	Post-Approval
<u>Lots 123,124& Pt Loc 170 Geographe Bay Road</u>	2005/2317	Not Controlled Action (Particular Manner)	Post-Approval
<u>McCourt Hills Estate Stage 3</u>	2006/2760	Not Controlled Action (Particular Manner)	Post-Approval
<u>Monaghan's Roundabout Project - Intersection of Bussell Highway and Caves Road, Shire of Busselton</u>	2007/3515	Not Controlled Action (Particular Manner)	Post-Approval
<u>Novacare Lifestyle Village</u>	2001/311	Not Controlled Action (Particular Manner)	Post-Approval
<u>Sand and Limestone Extraction on Lots 313 and 314, Harewoods Road</u>	2005/2346	Not Controlled Action (Particular Manner)	Post-Approval
<u>South Busselton Primary School</u>	2001/290	Not Controlled Action (Particular Manner)	Post-Approval
<u>Stirling to Harris Dam Pipeline construction, Harris River State Forest, WA</u>	2014/7277	Not Controlled Action (Particular Manner)	Post-Approval
<u>Stratham Park Estate Subdivision - Lots 70, 11 and 12</u>	2008/4068	Not Controlled Action (Particular Manner)	Post-Approval
<u>Subdivision and development of residential dwelling on part Lot 1, Bussell Highw</u>	2006/3023	Not Controlled Action (Particular Manner)	Post-Approval

Title of referral	Reference	Referral Outcome	Assessment Status
Not controlled action (particular manner)			

<u>Titanium mineral sands from M70/895 and M70/899</u>	2005/2031	Not Controlled Action (Particular Manner)	Post-Approval
--	-----------	---	---------------

Title of referral	Reference	Referral Outcome	Assessment Status
Not controlled action (particular manner)			
Waterloo to Busselton 132kV Transmission Line	2002/816	Not Controlled Action (Particular Manner)	Post-Approval
Widening of Ludlow North Road Between Peppermint Grove Road and Mallokup Road	2009/5242	Not Controlled Action (Particular Manner)	Post-Approval
Referral decision			
Ambergate North Residential Community (4896 lots)	2008/4617	Referral Decision	Completed
Bunbury Port Berth 14 Development, Bunbury Port Inner Harbour	2011/6023	Referral Decision	Completed
Bunbury Water Resource Recovery Scheme - Stage 2 Pipeline	2022/9145	Referral Decision	Referral Publication
Bunbury WRRS - Stage 2 Pipeline	2021/9092	Referral Decision	Completed
Construction of 14.5km 132kV transmission line	2009/4995	Referral Decision	Completed
Controlled Burn	2001/440	Referral Decision	Completed
Grand Southern Margin 2D Marine Seismic Survey	2008/4573	Referral Decision	Completed
Harvesting of Pinus Radiata Plantation	2010/5414	Referral Decision	Completed
Residential development, Lot 71 Spurr Street, Capel, WA	2017/8128	Referral Decision	Completed
Residential Subdivision, Location 871 Goodwood Rd and Lot 1181 Hawley Rd, Capel	2008/4090	Referral Decision	Completed
Residential subdivision and development	2007/3711	Referral Decision	Completed
Riverbank and Country Road Estates Lot 43 Bussell Highway	2005/2367	Referral Decision	Completed

Title of referral	Reference	Referral Outcome	Assessment Status
Not controlled action (particular manner)			

<u>Southern Forests Irrigation Scheme ??? Project 1: Donnelly River Offtake and Record Brook Dam, WA</u>	2018/8159	Referral Decision	Completed
--	-----------	-------------------	-----------

<u>Southern Forests Irrigation Scheme Project 2 - Irrigation Pipeline Network, South West region, WA</u>	2018/8161	Referral Decision	Completed
--	-----------	-------------------	-----------

Title of referral	Reference	Referral Outcome	Assessment Status
Referral decision			
Water quality improvement trial, Lower Vasse River, Busselton, WA	2013/6975	Referral Decision	Completed

Key Ecological Features

[\[Resource Information \]](#)

Key Ecological Features are the parts of the marine ecosystem that are considered to be important for the biodiversity or ecosystem functioning and integrity of the Commonwealth Marine Area.

Name	Region
Commonwealth marine environment within and adjacent to Geographe Bay	South-west
Western rock lobster	South-west

Biologically Important Areas

Scientific Name	Behaviour	Presence
Seabirds		
Ardena carneipes Flesh-footed Shearwater [82404]	Foraging (in high numbers)	Known to occur
Ardena pacifica Wedge-tailed Shearwater [84292]	Foraging (in high numbers)	Known to occur
Eudyptula minor Little Penguin [1085]	Foraging (provisioning young)	Known to occur
Hydroprogne caspia Caspian Tern [808]	Foraging (provisioning young)	Known to occur
Larus pacificus Pacific Gull [811]	Foraging (in high numbers)	Former Range
Larus pacificus Pacific Gull [811]	Foraging (in high numbers)	Known to occur
Onychoprion anaethetus Bridled Tern [82845]	Foraging (in high numbers)	Known to occur

Scientific Name	Behaviour	Presence
Pterodroma mollis Soft-plumaged Petrel [1036]	Foraging (in high numbers)	Known to occur
Puffinus assimilis tunneyi Little Shearwater [59363]	Foraging (in high numbers)	Known to occur
Sternula nereis Fairy Tern [82949]	Foraging (in high numbers)	Known to occur
Thalassarche chlororhynchos bassi Indian Yellow-nosed Albatross [85249]	Foraging (in high numbers)	Known to occur
Sharks		
Carcharodon carcharias White Shark [64470]	Foraging	Known to occur
Whales		
Balaenoptera musculus brevicauda Pygmy Blue Whale [81317]	Distribution	Known to occur
Balaenoptera musculus brevicauda Pygmy Blue Whale [81317]	Migration	Known to occur
Eubalaena australis Southern Right Whale [40]	Calving buffer	Known to occur
Eubalaena australis Southern Right Whale [40]	Seasonal calving habitat	Known to occur
Megaptera novaeangliae Humpback Whale [38]	Migration (north)	Known to occur
Megaptera novaeangliae Humpback Whale [38]	Migration (north and south)	Known to occur

[Megaptera novaeangliae](#)

Humpback Whale [38]

Migration
(south)

Known to occur

Caveat

1 PURPOSE

This report is designed to assist in identifying the location of matters of national environmental significance (MNES) and other matters protected by the Environment Protection and Biodiversity Conservation Act 1999 (Cth) (EPBC Act) which may be relevant in determining obligations and requirements under the EPBC Act.

The report contains the mapped locations of:

- World and National Heritage properties;
- Wetlands of International and National Importance;
- Commonwealth and State/Territory reserves;
- distribution of listed threatened, migratory and marine species;
- listed threatened ecological communities; and
- other information that may be useful as an indicator of potential habitat value.

2 DISCLAIMER

This report is not intended to be exhaustive and should only be relied upon as a general guide as mapped data is not available for all species or ecological communities listed under the EPBC Act (see below). Persons seeking to use the information contained in this report to inform the referral of a proposed action under the EPBC Act should consider the limitations noted below and whether additional information is required to determine the existence and location of MNES and other protected matters.

Where data are available to inform the mapping of protected species, the presence type (e.g. known, likely or may occur) that can be determined from the data is indicated in general terms. It is the responsibility of any person using or relying on the information in this report to ensure that it is suitable for the circumstances of any proposed use. The Commonwealth cannot accept responsibility for the consequences of any use of the report or any part thereof. To the maximum extent allowed under governing law, the Commonwealth will not be liable for any loss or damage that may be occasioned directly or indirectly through the use of, or reliance

3 DATA SOURCES

Threatened ecological communities

For threatened ecological communities where the distribution is well known, maps are generated based on information contained in recovery plans, State vegetation maps and remote sensing imagery and other sources. Where threatened ecological community distributions are less well known, existing vegetation maps and point location data are used to produce indicative distribution maps.

Threatened, migratory and marine species

Threatened, migratory and marine species distributions have been discerned through a variety of methods. Where distributions are well known and if time permits, distributions are inferred from either thematic spatial data (i.e. vegetation, soils, geology, elevation, aspect, terrain, etc.) together with point locations and described habitat; or modelled (MAXENT or BIOCLIM habitat modelling) using

Where little information is available for a species or large number of maps are required in a short time-frame, maps are derived either from 0.04 or 0.02 decimal degree cells; by an automated process using polygon capture techniques (static two kilometre grid cells, alpha-hull and convex hull); or captured manually or by using topographic features (national park boundaries, islands, etc.).

In the early stages of the distribution mapping process (1999-early 2000s) distributions were defined by degree blocks, 100K or 250K map sheets to rapidly create distribution maps. More detailed distribution mapping methods are used to update these distributions

4 LIMITATIONS

The following species and ecological communities have not been mapped and do not appear in this report:

- threatened species listed as extinct or considered vagrants;
- some recently listed species and ecological communities;
- some listed migratory and listed marine species, which are not listed as threatened species; and
- migratory species that are very widespread, vagrant, or only occur in Australia in small numbers.

The following groups have been mapped, but may not cover the complete distribution of the species:

- listed migratory and/or listed marine seabirds, which are not listed as threatened, have only been mapped for recorded
- seals which have only been mapped for breeding sites near the Australian continent

The breeding sites may be important for the protection of the Commonwealth Marine environment.

Refer to the metadata for the feature group (using the Resource Information link) for the currency of the information.

Acknowledgements

This database has been compiled from a range of data sources. The department acknowledges the following custodians who have contributed valuable data and advice:

- [-Office of Environment and Heritage, New South Wales](#)
- [-Department of Environment and Primary Industries, Victoria](#)
- [-Department of Primary Industries, Parks, Water and Environment, Tasmania](#)
- [-Department of Environment, Water and Natural Resources, South Australia](#)
- [-Department of Land and Resource Management, Northern Territory](#)
- [-Department of Environmental and Heritage Protection, Queensland](#)
- [-Department of Parks and Wildlife, Western Australia](#)
- [-Environment and Planning Directorate, ACT](#)
- [-Birdlife Australia](#)
- [-Australian Bird and Bat Banding Scheme](#)
- [-Australian National Wildlife Collection](#)
- [-Natural history museums of Australia](#)
- [-Museum Victoria](#)
- [-Australian Museum](#)
- [-South Australian Museum](#)
- [-Queensland Museum](#)
- [-Online Zoological Collections of Australian Museums](#)
- [-Queensland Herbarium](#)
- [-National Herbarium of NSW](#)
- [-Royal Botanic Gardens and National Herbarium of Victoria](#)
- [-Tasmanian Herbarium](#)
- [-State Herbarium of South Australia](#)
- [-Northern Territory Herbarium](#)
- [-Western Australian Herbarium](#)
- [-Australian National Herbarium, Canberra](#)
- [-University of New England](#)
- [-Ocean Biogeographic Information System](#)
- [-Australian Government, Department of Defence](#)
- [Forestry Corporation, NSW](#)
- [-Geoscience Australia](#)
- [-CSIRO](#)
- [-Australian Tropical Herbarium, Cairns](#)
- [-eBird Australia](#)
- [-Australian Government – Australian Antarctic Data Centre](#)
- [-Museum and Art Gallery of the Northern Territory](#)
- [-Australian Government National Environmental Science Program](#)
- [-Australian Institute of Marine Science](#)
- [-Reef Life Survey Australia](#)
- [-American Museum of Natural History](#)
- [-Queen Victoria Museum and Art Gallery, Inveresk, Tasmania](#)
- [-Tasmanian Museum and Art Gallery, Hobart, Tasmania](#)
- [-Other groups and individuals](#)

The Department is extremely grateful to the many organisations and individuals who provided expert advice and information on numerous draft distributions.

Please feel free to provide feedback via the [Contact Us](#) page.

[© Commonwealth of Australia](#)

Department of Agriculture Water and the Environment

GPO Box 858

Canberra City ACT 2601 Australia

+61 2 6274 1111

Appendix D

Matters of National Environmental Significance Aligned to NRM Strategic Priorities

MNES Theme - EPBC Listed Threatened Species

Targeted MNES	Strategy Theme	Priority Asset	Project Name	Project Description	Project Partners
<i>Bettongia penicillata ogilbyi</i> (Woylie)	Biodiversity - Terrestrial	Listed threatened species	Felixer Grooming Traps for Controlling Feral Cats in the Upper Warren	This project is testing and refining the use of Felixer grooming traps for controlling feral cats at the mesoscale in the Upper Warren area. Baiting for feral cats has been found to be largely ineffective in this area but the Felixer grooming trap has potential to be a useful tool for controlling feral cats. This project will determine their safety for non-target native species and test several deployment styles to assess their effectiveness for controlling feral cats.	SWCC DBCA Blackwood Basin Group
<i>Dasyurus geoffroii</i> (Chuditch)		Perup			
<i>Macrotis lagotis</i> (Bilby)					
<i>Myrmecobius fasciatus</i> (Numbat)					
<i>Pseudocheirus occidentalis</i> (Western ringtail possum)					
<i>Setonix brachyurus</i> (Quokka)					
<i>Bettongia penicillata ogilbyi</i> (Woylie)	Biodiversity - Terrestrial	Listed threatened species,	Habitat protection and creation for south-west threatened species	This project works with local government, DBCA and private landholders to protect, enhance and create new habitat for EPBC listed threatened species across the SWCC region. The project incorporates support for the Land for Wildlife program that supports private landholders to manage native vegetation on their properties for its biodiversity values.	SWCC Leschenault Catchments Council Geocatch City of Busselton Nature Conservation Margaret River Region Lower Blackwod LCDC Southern Forests Community Landcare Blackwood Basin Group
<i>Dasyurus geoffroii</i> (Chuditch)		Whicher 1,			
<i>Pseudocheirus occidentalis</i> (Western ringtail possum)		Scott River,			
		Perup,			
		Karridale, Whicher 2			
<i>Pseudocheirus occidentalis</i> (Western ringtail possum)	Biodiversity - Terrestrial	Listed threatened species	Ropebridges to enhance connectivity for urban western ringtail possums	This project will construct 2 rope bridges for western ringtail possums in urban areas to reduce road mortality and enhance connectivity between areas of remnant vegetation.	SWCC City of Busselton

Targeted MNES	Strategy Theme	Priority Asset	Project Name	Project Description	Project Partners
Pseudocheirus occidentalis (Western ringtail possum)	Biodiversity - Terrestrial	Listed threatened species	Responsible pet ownership program and community engagement in threatened species conservation.	Predation by domestic dogs and cats is listed as a threat to the critically endangered western ringtail possum. This project is working towards reducing this threat by changing the behaviour of pet owners to keep their animals contained to reduce the incidence of possums being injured or killed by domestic pets. More widely the community is being engaged in the conservation of threatened species in the region through a series of events held across the region.	SWCC Geocatch Nature Conservation Margaret River Region Lower Blackwood LCDC Blackwood Basin Group Shire of Nannup Fostering and Assistance for Wildlife Needing Aid Promote Preston Maroo Wildlife Refuge.
Bettongia penicillata ogilbyi (Woylie)	Biodiversity - Terrestrial	Listed threatened species,	Wellington National Park Fauna Survey	This project sees the entirety of the Wellington National Park surveyed using remote cameras over a 2-year period to improve the understanding of the distribution of threatened species in the park as well as introduced species. This information will be used to target pest control programs, restrict vehicle access to important habitat areas and allows for improvement in fire control activities by taking into account the location of threatened species.	DBCA
Dasyurus geoffroi (Chuditch)		Collie South			
Myrmecobius fasciatus (Numbat)					
Pseudocheirus occidentalis (Western ringtail possum)					
Setonix brachyurus (Quokka)					
Pseudocheirus occidentalis (Western ringtail possum)	Biodiversity - Terrestrial	Listed threatened species,	Western ringtail possum rehabilitation improvement	Every year over 200 western ringtail possums come into the care of wildlife rehabilitators in the Busselton and Dunsborough areas alone. Of these animals approximately 25% are able to be released, but their fate once released is unknown. This project consists of a 3-year research program to track released possums and to test various techniques for improving their survival post release. An online management data base, the Wildlife Assistance and Rehabilitation Database (WARD) has also been developed to gather data on the causes of animals coming into care and their fate. WARD also makes it easier for rehabilitators to comply with their regulatory requirements under the Biodiversity Conservation Act.	SWCC DBCA University of Western Australia Fostering and Assistance for Wildlife Needing Aid

Targeted MNES	Strategy Theme	Priority Asset	Project Name	Project Description	Project Partners
Zanda latirostris (Carnaby's cockatoo)	Biodiversity - Terrestrial	Listed threatened species,	Protecting WA Black Cockatoos - South West	This project aims to improve breeding success for Carnaby's black cockatoo by protecting and enhancing foraging habitat around known breeding sites in the SWCC region. Survey work will be completed to try to identify more nesting sites with revegetation work and fencing to protect remnant vegetation being done near known breeding sites to improve access to foraging resources required for the birds to successfully breed.	SWCC Birdlife Shire of Kent Dumbleyung Landcare Shire of Kojonup Katanning Landcare Wagin Woodanilling Landcare Zone Blackwood Basin Group
Leipoa ocellata (Malleefowl)	Biodiversity - Terrestrial	Listed threatened species,	Malleefowl in the SWCC region	This project will deliver valuable survey work to determine the distribution of malleefowl in the eastern part of the SWCC region and fox control to protect malleefowl populations and contribute to the National Malleefowl Recovery Team's adaptive management program.	SWCC Shire of Kent Gnowangerup Aboriginal Corporation Badgebup Aboriginal Corporation Dumbleyung Landcare
Bettongia penicillata ogilbyi (Woylie)	Biodiversity - Terrestrial	Listed threatened species,	Fox Control in the Upper Warren	This project works with farmers in the upper warren to undertake twice annual fox control to reduce the rate of reinvasion of foxes to the aerially baited conservation estate in the area. Research into the ecology and population dynamics of numbats in the area through DBCA and UWA is also being supported to improve management of this area for these species.	SWCC DBCA UWA Blackwood Basin Group Southern Forests Community Landcare
Dasyurus geoffroii		Perup			
Macrotis lagotis					
Myrmecobius fasciatus					
Pseudocheirus occidentalis (Western ringtail)					
Setonix brachyurus (Quokka)					
Pseudocheirus occidentalis (Western ringtail possum)	Biodiversity - Terrestrial	Listed threatened species, Perup	Bolstering western ringtail possums in the Upper Warren	Extensive survey work and a translocation into the Perup Sanctuary will help to improve management of and bolster the security of the species in the Upper Warren.	DBCA

Targeted MNES	Strategy Theme	Priority Asset	Project Name	Project Description	Project Partners
Zanda latirostris (Carnaby's cockatoo)	Biodiversity - Terrestrial	Listed threatened species,	Protecting WA Black Cockatoos - South West	This project aims to improve breeding success for Carnaby's black cockatoo by protecting and enhancing foraging habitat around known breeding sites in the SWCC region. Survey work will be completed to try to identify more nesting sites with revegetation work and fencing to protect remnant vegetation being done near known breeding sites to improve access to foraging resources required for the birds to successfully breed.	SWCC Birdlife Shire of Kent Dumbleyung Landcare Shire of Kojonup Katanning Landcare Wagin Woodanilling Landcare Zone Blackwood Basin Group
Leipoa ocellata (Malleefowl)	Biodiversity - Terrestrial	Listed threatened species,	Malleefowl in the SWCC region	This project will deliver valuable survey work to determine the distribution of malleefowl in the eastern part of the SWCC region and fox control to protect malleefowl populations and contribute to the National Malleefowl Recovery Team's adaptive management program.	SWCC Shire of Kent Gnowangerup Aboriginal Corporation Badgebup Aboriginal Corporation Dumbleyung Landcare
Bettongia penicillata ogilbyi (Woylie)	Biodiversity - Terrestrial	Listed threatened species,	Fox Control in the Upper Warren	This project works with farmers in the upper warren to undertake twice annual fox control to reduce the rate of reinvasion of foxes to the aerially baited conservation estate in the area. Research into the ecology and population dynamics of numbats in the area through DBCA and UWA is also being supported to improve management of this area for these species.	SWCC DBCA UWA Blackwood Basin Group Southern Forests Community Landcare
Dasyurus geoffroi		Perup			
Macrotis lagotis					
Myrmecobius fasciatus					
Pseudocheirus occidentalis (Western ring-					
Setonix brachyurus (Quokka)					
Pseudocheirus occidentalis (Western ring-tail possum)	Biodiversity - Terrestrial	Listed threatened species, Perup	Bolstering western ring-tail possums in the Upper Warren	Extensive survey work and a translocation into the Perup Sanctuary will help to improve management of and bolster the security of the species in the Upper Warren.	DBCA
Engaewa pseudoreducta (Margaret River burrowing crayfish)	Biodiversity - Aquatic	Listed threatened species, Margaret River Burrowing Crayfish	Using eDNA to Improve Management of the Margaret River Burrowing Crayfish	This project will develop environmental DNA (eDNA) survey techniques for this cryptic species which will allow for much easier monitoring of existing populations and discovery of new populations.	SWCC, Curtin University

MNES Theme - Ramsar Wetlands

Targeted MNES	Strategy Theme	Priority Asset	Project Name	Project Description	Project Partners
Muir-Byenup System	Biodiversity – Aquatic	Muir-Byenup wetlands	Long term management of South West Wetlands of International Significance	Working with local private land-holders and the Department of Biodiversity, Conservation and Attractions this project will collect valuable bird data and reduce predation over the 1500ha Muir Byenup Wetlands.	SWCC DBCA
Vasse-Wonnerup System	Biodiversity – Aquatic	Vasse-Wonnerup wetlands	Long term management of South West Wetlands of International Significance	The aims of this project are to control weeds and reduce garden nutrient runoff to the Vasse-Wonnerup wetlands.	SWCC Geocatch DBCA DWER
Toolibin Lake	Biodiversity - Terrestrial	Toolibin	Long term management of South West Wetlands of International Significance	This project will implement a highly targeted and cost-effective approach to prevent the intrusion of salt laden surface water to maintain the last fresh-water habitat in the Wheatbelt at Lake Toolibin.	SWCC DBCA

Appendix E

Currently Unfunded Matters of National Environmental Significance (MNES) in the South West NRM Region

MNES Theme	Target Assets	Common Name
EPBC Listed Threatened Species	<i>Acacia brachypoda</i>	Western Wheatbelt Wattle
	<i>Acacia depressa</i>	Echidna Wattle
	<i>Acacia leptalea</i>	Chinocup Wattle
	<i>Adenanthos pungens subsp. effusus</i>	Sprawling Spiky Adenanthos
	<i>Adenanthos pungens subsp. pungens</i>	Spiky Adenanthos
	<i>Andersonia annelsii</i>	null
	<i>Andersonia gracilis</i>	Slender Andersonia
	<i>Austrostipa bronwenae</i>	null
	<i>Austrostipa jacobiana</i>	null
	<i>Balaenoptera borealis</i>	Sei Whale
	<i>Balaenoptera musculus</i>	Blue Whale
	<i>Balaenoptera physalus</i>	Fin Whale
	<i>Banksia mimica</i>	Summer Honeypot
	<i>Banksia nivea subsp. uliginosa</i>	Swamp Honeypot
	<i>Banksia oligantha</i>	Wagin Banksia
	<i>Banksia squarrosa subsp. argillacea</i>	Whicher Range Dryandra
	<i>Banksia verticillata</i>	Granite Banksia, Albany Banksia, River Banksia
	<i>Bertmainius tingle</i>	Tingle Pygmy Trapdoor Spider
	<i>Boronia capitata subsp. capitata</i>	a shrub
	<i>Boronia exilis</i>	Scott River Boronia
	<i>Bossiaea sp. Frankland (E.M.Sandiford EMS 896)</i>	null
	<i>Botaurus poiciloptilus</i>	Australasian Bittern
	<i>Brachyscias verecundus</i>	Ironstone Brachyscias
	<i>Caladenia bryceana subsp. bryceana</i>	Dwarf Spider-orchid
	<i>Caladenia busselliana</i>	Bussell's Spider-orchid
	<i>Caladenia caesarea subsp. maritima</i>	Cape Spider-orchid
	<i>Caladenia christineae</i>	Christine's Spider Orchid
	<i>Caladenia dorrienii</i>	Cossack Spider-orchid
	<i>Caladenia excelsa</i>	Giant Spider-orchid
	<i>Caladenia harringtoniae</i>	Harrington's Spider-orchid, Pink Spider-orchid
	<i>Caladenia hoffmanii</i>	Hoffman's Spider-orchid
	<i>Caladenia huegelii</i>	King Spider-orchid, Grand Spider-orchid, Rusty Spider-orchid
	<i>Caladenia leucochila</i>	Collie Spider Orchid
	<i>Caladenia lodgeana</i>	Lodge's Spider-orchid
	<i>Caladenia luteola</i>	Lemon Spider Orchid
	<i>Caladenia procera</i>	Carbunup King Spider Orchid
	<i>Caladenia viridescens</i>	Dunsborough Spider-orchid
	<i>Caladenia winfieldii</i>	Majestic Spider-orchid
	<i>Calectasia pignattiana</i>	Stilted Tinsel Lily
	<i>Calidris canutus</i>	Red Knot, Knot

<i>Colidris ferruginea</i>	Curlew Sandpiper
<i>Colidris tenuirostris</i>	Great Knot
<i>Colyptorhynchus banksii naso</i>	Forest Red-tailed Black-Cockatoo, Kararak
<i>C:Orchorias taurus (westcoast population)</i>	Grey Nurse Shark (west coast population)
<i>C:Orcharodon carcharias</i>	White Shark, Great White Shark
<i>C:Orethya carinata</i>	Loggerhead Turtle
<i>Chamaelucium sp. Coastal plain (R.D. Royce 4872)</i>	Royce's Waxflower
<i>Charadrius leschenaultii</i>	Greater Sand Plover, Large Sand Plover
<i>Charadrius mangoanus</i>	Lesser Sand Plover, Mongotan Plover
<i>Chelonio mydas</i>	Green Turtle
<i>Cherax tenuimanus</i>	Hairy Marron, Margaret River Hairy Marron, Margaret River Marron
<i>Commersonia aequalis</i>	Many-flowered Commersonia
<i>Commersonia erythrogyna</i>	Trigwell's Rulingia
<i>Conostylis drummondii</i>	Drummond's Conostylis
<i>Conostylis seorsiflora subsp. trichophylla</i>	Hairy Mat Conostylis
<i>Conostylis setiger subsp. dasys</i>	Boscabel Conostylis
<i>Darwinicornea</i>	Mogumber Bell, Narrogin Bell
<i>Darwinia ericoides</i>	Scott River Darwinia
<i>Darwinia whichei</i>	Abba Bell
<i>Daviesia elongata subsp. elongata</i>	Long-leaved Daviesia
<i>Daviesia euphorbioides</i>	Wongan Cactus
<i>Dermochelys coriacea</i>	Leatherback Turtle, Leather Turtle, Luth
<i>Diomedea exulans</i>	Wandering Albatross
<i>Diuris drummondii</i>	Tall Donkey Orchid
<i>Diuris micrantha</i>	Dwarf Bee-orchid
<i>Diuris purdiei</i>	Purdie's Donkey-orchid
<i>Drosera confusa</i>	Late Hammer-orchid
<i>Drosera elatior</i>	Glossy-leaved Hammer Orchid, Glossy-leaved Hammer Orchid, Waxy Hammer Orchid
<i>Drosera micrantha</i>	Dwarf Hammer-orchid
<i>Eleocharis keigheryi</i>	Keighery's Eleocharis
<i>Enallagma cyathigerum</i>	Ounsborough Burrowing Crayfish
<i>Enallagma cyathigerum</i>	Walpole Burrowing Crayfish
<i>Erismophila ovata</i>	Whorled Erismophila
<i>Eubalaena australis</i>	Southern Right Whale
<i>Eucalyptus phyloides</i>	Meelup Mallee
<i>Gadaxia nigrostriata</i>	Black-striped Dwarf Gadaxia, Blackstripe Minnow

<i>Gostrolobium argyrotichum</i>	MetricupPea
<i>GostrolobiumJehmannii</i>	CranbrookPea
<i>Gostrolobiummodestum</i>	Broad-leaved Gastr olobium
<i>Gostrolobiumpapilio</i>	Butterfly-leavedGastrolobium
<i>Geocriniaalba</i>	White-bellied Frog,Creek frog
<i>Geocriniavitelino</i>	Orange-bellied Frog
<i>Goodeniaorthrotricha</i>	nun
<i>Grevillea acropogon</i>	null
<i>Grevillea brachysrylis subsp. ausrrali s</i>	null
<i>Grevilleo brachystylis subsp. grandis</i>	LargefloweredShort-styled Grevillea
<i>Grevilleae/ongata</i>	IronstoneGrevillea
<i>Grevillea maccutcheonii</i>	McCutcheonsGrevillea
<i>Grevillea rara</i>	Rare Grevillea
<i>Hemigeniaramosissima</i>	BranchedHemigenia
<i>Jacksonia velveta</i>	Collie Jacksonia
<i>Kennediaglabroto</i>	Northdiffe Kennedia
<i>Kennedia /ate ritia</i>	Augusta Kennedia
<i>lambertia echinatasubsp. occidentalis</i>	Western Prickly Honeysuckle
<i>lambertia orbifolia</i>	Roundleaf Honeysuckle
<i>Ieptomeriadielsiana</i>	Oiels' Currant Bush
<i>Leucopogon sp. Ong erup (A. S. George 16682/</i>	null
<i>Umosalaponica menzbieri</i>	Northern Siberian Bar-tailed Godwit Russkoye Bar-tailed Godwit
<i>Maa onecteshalli</i>	Northern Giant Petrel
<i>Microtis gfobula</i>	South-Coast Mignonette Orchid
<i>Nannatherina balstoni</i>	Balston , Pygmy Perch
<i>Nannopercapygmoea</i>	littlePygmy Perch
<i>Natator depressus</i>	FlatbackTurtle
<i>Numeniusmodogascoensis</i>	Eastern curlew, far Eastern curlew
<i>Pachyptila runur subontortica</i>	Fairy Prion (southern)
<i>Petrophile /atericolo</i>	laterite Petrophile
<i>Phoscogale c.a/ura</i>	Red-tailed Phascogale, Red-tailed Wambenger Kemgor
<i>Phoebetrio f u sco</i>	Sooty Albatross
<i>Pterodromomolis</i>	Soft-plumaged Petrel
<i>Pulteno eopoucifloro</i>	NarroginPea
<i>Reedia spathaceo</i>	Reedia
<i>Rostrowlo oustra/is</i>	Australian Painted Snipe
<i>Ro yceo pycnophy/loides</i>	Saltmat
<i>Sphyrna lewini</i>	ScallopedHammerhead
<i>Stemulonereisnereis</i>	Australian Fairy Tern
<i>Synopheo sp. Fairbridge Form (D.Popenfus 696)</i>	Selena's Synaphea

	<i>Synaphea</i> sp. <i>Pinjorra</i> Plain (A.S. George 17182)	null
	<i>Synaphea</i> sp. <i>Serpentine</i> (G.R. Brand 103)	null
	<i>Synaphea stenofoba</i>	Owellingup <i>Synaphea</i>
	<i>Tetrario australiensis</i>	Southern <i>Tetraria</i>
	<i>Tholassarche coteri</i>	Indian Yellow-nosed Albatross
	<i>Tholassarche cota</i>	Shy Albatross
	<i>Thalassarche melanophris</i>	Black-browed Albatross
	<i>Thefymirra stellata</i>	Star Sun-orchid
	<i>Thunnus maccoyii</i>	Southern Bluefin Tuna
	<i>Tribonanthes purpurea</i>	Granite Pink
	<i>Vertioordia carinara</i>	Stirling Range Featherflower
	<i>Vertioordia densiflora</i> var. <i>pedunculata</i>	Long-stalked Featherflower
	<i>Vertioordia fimbriolepis</i> subsp. <i>fimbriolepis</i>	Shy Featherflower
	<i>Verticordia plumosa</i> var. <i>anareores</i>	Tufted Plumed Featherflower
	<i>Verticordia plumosa</i> var. <i>vassensis</i>	Vase Featherflower
	<i>Verticordia staminosa</i> var. <i>cyathiflora</i>	Granite Featherflower
	<i>Westralunio carteri</i>	Carter's Freshwater Mussel, Freshwater Mussel
	<i>Wurmbia colicicola</i>	Naturaliste Nancy
	<i>Zanda baudinii</i>	Baudin's Black-Cockatoo, Long-billed Blackcockatoo
EPBC listed Threatened Ecological Communities	Aquatic Root Mat Community 2 in Caves of the Leeuwin Naturaliste Ridge	
	Tuan (<i>Eucalyptus gomphocephala</i>) Woodlands and Forests of the Swan Coastal Plain ecological community	
	Clay Pans of the Swan Coastal Plain	
	<i>Corymbia calophylla</i> - <i>Xanthorrhoea preissii</i> woodlands and shrublands of the Swan Coastal Plain	
	Shrublands on southern Swan Coastal Plain ironstones	
	Perched Wetlands of the Wheatbelt region with extensive stands of living sheoak and paperbark across the lake floor (Toolibin Lake)	
	Proteaceae Dominated Kwongan Shrublands of the Southeast Coastal Floristic Province of Western Australia	
	Aquatic Root Mat Community 1 in Caves of the Leeuwin Naturaliste Ridge	
	<i>Banksia</i> Woodlands of the Swan Coastal Plain ecological community	
	Scott River Ironstone Association	
	Aquatic Root Mat Community 4 in Caves of the Leeuwin Naturaliste Ridge	
	Aquatic Root Mat Community 3 in Caves of the Leeuwin Naturaliste Ridge	

	Eocatypt Woodlands of the Western Australian Wheatbelt	
	Subtropical and Temperate Coastal Saltmarsh	
EPBC listed Migratory Species	<i>Galidris alba</i>	Sanderling
	<i>Eu balaena australis</i>	Southern Right Whale
	<i>Garcharodon corcharios</i>	White Shark, Great White Shark
	<i>Philomachus pugnax</i>	Ruff (Reeve)
	<i>Galidris ferruginea</i>	Corlew Sandpiper
	<i>Galidris canorus</i>	Red Knot , Knot
	<i>Galidris melanotos</i>	Pectoral Sandpiper
	<i>Phoebastria immutabilis</i>	Red-tailed Tropicbird
	<i>Tringa brevipes</i>	Grey-tailed Tattler
	<i>Numenius phaeopus</i>	Whimbrel
	<i>Cetorhinus maximus</i>	Pygmy Right Whale
	<i>Rhincodon typus</i>	Whale Shark
	<i>Numenius madagascariensis</i>	Eastern curlew, Far Eastern Curlew
	<i>Diomedea amsterdamensis</i>	Amsterdam Albatross
	<i>Orcinus orca</i>	Killer Whale, Orca
	<i>Chorodrius leschenaultii</i>	Greater Sand Plover, Large Sand Plover
	<i>Pandion haliaetus</i>	Osprey
	<i>Arenaria interpres</i>	Ruddy Turnstone
	<i>Lagenorhynchus obscurus</i>	Dusky Dolphin
	<i>Ardenna carneipes</i>	Flesh-footed Shearwater, Flesh-footed Shearwater
	<i>Megaptera novaeangliae</i>	Humpback Whale
	<i>Lamna nasus</i>	Porbeagle, Mackerel Shark
	<i>Balaenoptera physalus</i>	Fin Whale
	<i>Balaenoptera musculus</i>	Blue Whale
	<i>Balaenoptera edeni</i>	Bryde's Whale
	<i>Urosalpinx laponica</i>	Bar-tailed Godwit
	<i>Urosalpinx cinerea</i>	Broad-billed Sandpiper
	<i>Goldeneye stenura</i>	Pin-tailed Snipe
	<i>Balaenoptera borealis</i>	Sei Whale
	<i>Urosalpinx limosa</i>	Black-tailed Godwit
	<i>Thalassarche impavida</i>	Campbell Albatross, Campbell Black-browed Albatross
	<i>Diomedea sanfordi</i>	Northern Royal Albatross
	<i>Motacilla cinerea</i>	Grey Wagtail
	<i>Pipilo erythrophthalmus</i>	Pacific Golden Plover
<i>Diomedea epomophora</i>	Southern Royal Albatross	
<i>Diomedea exulans</i>	Wandering Albatross	
<i>Galidris ruficollis</i>	Red-necked Stint	
<i>Colidris subminura</i>	Long-tailed Stint	
<i>Garchorhinus tongiminus</i>	Oceanic Whitetip Shark	

<i>Thalassorche couto</i>	Shy Albatross
<i>C:Olidris t enuiro stris</i>	Great Knot
<i>Gallinago mega/a</i>	Swinhoe's Srike
<i>Apus pacificus</i>	Fork-tailed Swift
<i>Chorodrius mongolus</i>	Lesser SandPlover, Mongolian Plover
<i>Mobula birostris</i>	Giant Manta Ray
<i>Mobula alfredi</i>	Reef Manta Ray, Coastal Manta Ray
<i>Ardenna grisea</i>	Sooty Shearwater
<i>Onychoprion anaethetus</i>	Bridled Tern
<i>Tringastagnotis</i>	Marsh Sandpiper, Little Greenshank
<i>C:Olidris acuminata</i>	Sharp-tailed Sandpiper
<i>Numenius minutus</i>	Little OJrlew, Little Whimbrel
<i>Natator depressus</i>	Flatback Turtle
<i>Anous stolidus</i>	Common Noddy
<i>Diomedea dabbenena</i>	Tristan Albatross
<i>Macronectes giganteus</i>	Southern Giant-Petrel, Southern Giant Petrel
<i>Tringa/oreola</i>	Wood Sandpiper
<i>Physeter macrocephalus</i>	Sperm Whale
<i>Macronectes halli</i>	Northern Giant Petrel
<i>Caretta caretta</i>	Loggerhead Turtle
<i>Chelonia mydas</i>	Green Turtle
<i>Thalasseus bergii</i>	Greater Crested Tern
<i>Phoebastria fusca</i>	Sooty Albatross
<i>Tringatoranus</i>	Common Redshank, Redshank
<i>Actitis hypoleucos</i>	Common Sandpiper
<i>Thalassarche steadi</i>	White-capped Albatross
<i>Thalassarche chelstoni</i>	Indian Yellow-nosed Albatross
<i>Hydroprogne caspia</i>	Caspian Tern
<i>Tringa nebularia</i>	Common Greenshank, Greenshank
<i>Choradrius bicinctus</i>	Double-banded Plover
<i>Thalassarche melanophrys</i>	Black-browed Albatross
<i>Dermochelys coriacea</i>	Leatherback Turtle, Leather Turtle, Luth